

HELI

CDD10R-S CDD12R-S Electric Stacker with Initial Lift

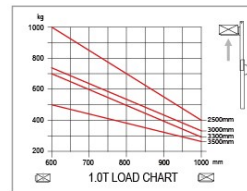
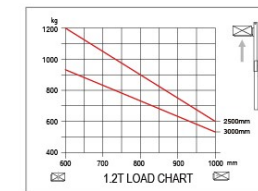
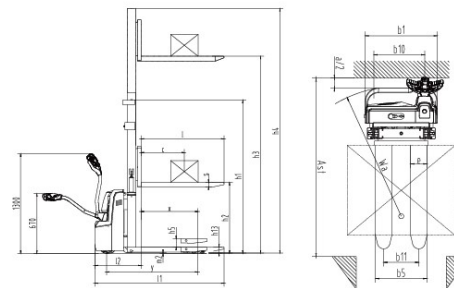
Characteristics

- The truck features compact design, small dimensions and excellent visibility.
- The truck adopts 4- points support structure, side positioned tiller and low center of gravity design which featuring excellent stability.
- Double pallet design: two pallet can be handled at one time; initial lift of load leg increases ground clearance to facilitate traffic ability on ramps, dock levelers and bridge.
- Vertical driving wheel offers small turning radius; dustproof waterproof motor is easy for maintenance.
- High efficient electromagnetic parking brake offers good ramp braking performance.
- Low voltage protection setting prolongs the battery life.
- Height adjustable balance wheel ensures the drive wheel life.

CDD10R-S CDD12R-S

Manufacturer's Data and Technical Characteristics

Character		HELI	
1.01	Manufacturer		
1.02	Model	CDD10R-S	CDD12R-S
1.03	Mast type	2-stage mast	
1.04	Load capacity	Q	kg
1.05	Load center distance	C	mm
1.06	Driving mode	Walkie	
1.07	Front overhang	x	mm
1.08	Wheel base	Y	mm
Tyre			
2.01	Tyre type	Polyurethane	
2.02	Wheels number,Front/rear(X=driven wheels)	1x+1/4	
2.03	Track Width,front	b10	mm
2.04	Track Width,rear	b11	mm
2.04	Wheel size, front	ø195x70	
2.05	Wheel size, rear	ø80x70	
2.06	Wheel size, additional	ø150x60	
Dimension			
3.01	Lift height	h3	mm
3.02	Height, mast extended	h4	mm
3.03	Height, mast lowered	h1	mm
3.04	Height,lowered	h13	mm
3.05	Initial lift	h5	mm
3.06	Fork size	s/e/l	mm
3.07	Overall length	l1	mm
3.08	Length to face of forks	l2	mm
3.09	Overall width	b1	mm
3.10	Width across forks	b5	mm
3.11	Turning radius	Wa	mm
3.12	Aisle width with pallet 800Wx1200L, clearance 200	Ast	mm
3.13	round clearance	m2	mm
Performance			
4.01	Travelling speed,laden/unladen	km/h	
4.02	Lifting speed,laden/unladen	m/s	
4.03	Lowering speed,laden/unladen	m/s	
4.04	Gradeability,laden/unladen	%	
Electrical configuration			
5.01	Drive motor power	kw	
5.02	Lifting motor power	kw	
5.03	Battery voltage	V	
5.04	Battery capacity	Ah	
5.05	Battery dimensions l/w/h	mm	
5.06	Controller	CURTIS	
5.07	Brake	Electromagnetic	
Weight			
6.01	Total weight(with battery)	kg	
6.02	Battery weight	kg	



ANHUI HELI CO., LTD.

Add / No.668, FangXing Road, Hefei, China
Fax / +86-551-63639966

Tel / +86-551-63639068(America); 63639258(Europe);
63639358(Asia); 63662105(Africa & Middle East);
63639530(Key Accounts Division); 63662105(Wheel loader)