








## Technical specifications

	Width	<b>2.5 m</b>
	Brush diameter	<b>0.6 m</b>
	Waste collector volume	<b>180 l</b>
	Operation	<b>Driver</b>
	Drive system	<b>Hydraulic</b>



## PVK sweeping device

- for clean and tidy roads.

### Easy to use

The PVK sweeping device is intended for the collection and disposal of bulk materials (debris, sand, dust, etc.). Common areas of application are paved surfaces and paths. In addition to sweeping the carriageway and the edge of the pavement, the sweeping device can also be used to clean drainage ditches at the edge of the road.

### Clean to the edges

The side brush is suitable for sweeping along road curbs, buildings and on all surfaces where the base brush cannot access. The

side brush allows the material to be thrown to the left or right, the advantage of this feature is that you can clean the surface over the edge of the roadway and consequently reduce the intervals of emptying the waste collector.

### For dust reduction

The PVK sweeper can be equipped with a water spray device that accelerates the settling of dust that can rise during sweeping. Water spraying is carried out via a water pump and nozzles. Water tanks can be installed on the device or on the vehicle. The device is characterized by easy

maintenance and a quick-change brush system.

### Mounting options

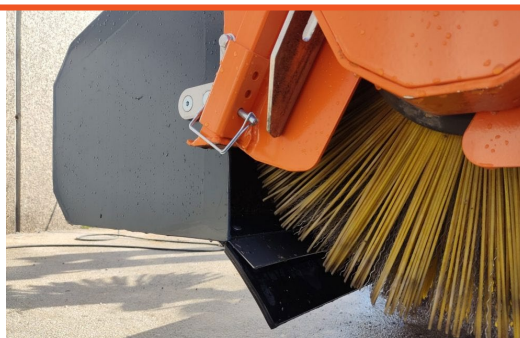
In addition to standard fixing plates and a three-point hitch, we also offer an option for installation on various types of working machines, as well as universal and other vehicles.

### Drive and control

Mechanical functions such as steering, brush drive, dirt collection bin emptying and side brush drive are performed via the hydraulic control circuits of the carrier vehicle.



Easy emptying of the waste collector



Complete waste removal



Side brush safety mechanism