

MODELLO / MODEL / MODELE:
XSOLAR

CODICE / CODE / REF.:

XS-A-001

VEICOLO / VEHICLE / VEHICULE:
IVECO_DAILY_50C15

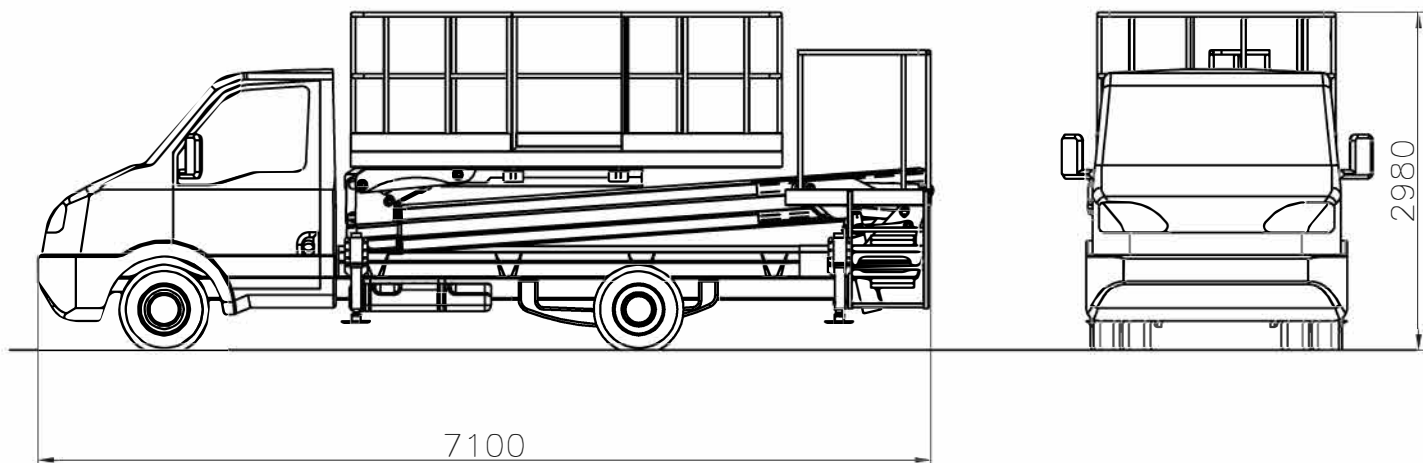
PTT / GW / PTC:
5000 kg

PASSO / WHEELBASE / EMPATT:
3750



Bini Gru di Bini Roberto

Sede Legale: Via A. Moro 62 - 40050 Castello D'Argile (BO) Italy
Sede Operativa: Via Prati 9/A - 40050 Castello D'Argile (BO) Italy
P.Iva 00023611205 C.F. BNI RRT 63T 06E 514U REA 307372
Tel. +39 (0)51 0827261 Mob. +39 348 7614707
www.binigru.it info@binigru.it



CARATTERISTICHE TECNICHE / TECHNICAL FEATURES / DONNES TECHNIQUES

Altezza di lavoro / Working height / Hauteur de travail	15m
Portata / Capacity / Charge utile	400 Kg
Raggio max. di lavoro posteriore / Max posterior outreach / Etendu postérieure max.	3.9m
Raggio max. di lavoro laterale / Max lateral outreach / Etendu latérale max.	2.5m
Lunghezza max. in ordine di marcia / Max length on road / Longueur en route	7100 mm
Larghezza max. in ordine di marcia / Max width on road / Largeur en route	2100 mm
Larghezza max. posizione di lavoro / Max width on working position / Largeur max. en travail	2100 mm
Altezza max. in ordine di marcia / Max height / Hauteur max. en route	2980 mm
Articolazione braccio inferiore o pantografo / Lower boom articulation / Articulation bras inférieur	
Articolazione braccio superiore / Upper boom articulation / Articulation bras supérieur	
Peso / Total weight / Poids	4500 Kg
Capacità minima sollevatore / Tractor's lift capacity / Capacité de relevage	
Pompa oleodinamica / Hydraulic pump / Pompe hydraulique	24 Lt/min, 250 bar
Ciclo completo di manovra / Manoeuvring complete cycle / Cycle complet de manoeuvre	2.20 min
Conforme / in compliance with / en conformité avec /	CE

MODELLO / MODEL / MODELE:
XSOLAR

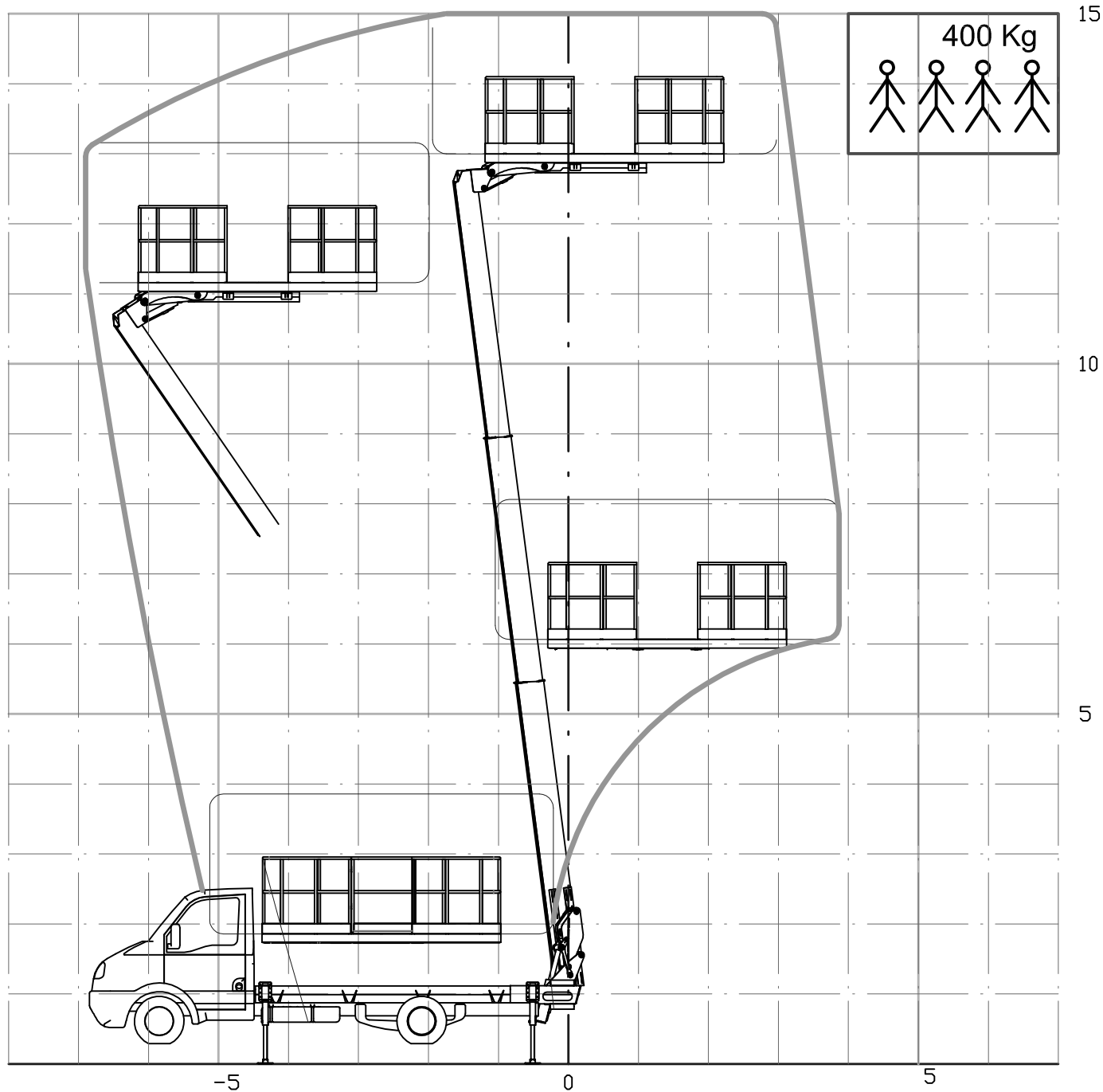
CODICE / CODE / REF.:

XS-A-001

VEICOLO / VEHICLE / VEHICULE:
IVECO_DAILY_50C15

PTT / GVW / PTC:
5000 kg

PASSO / WHEELBASE / EMPATT:
3750



MODELLO / MODEL / MODELE:
XSOLAR

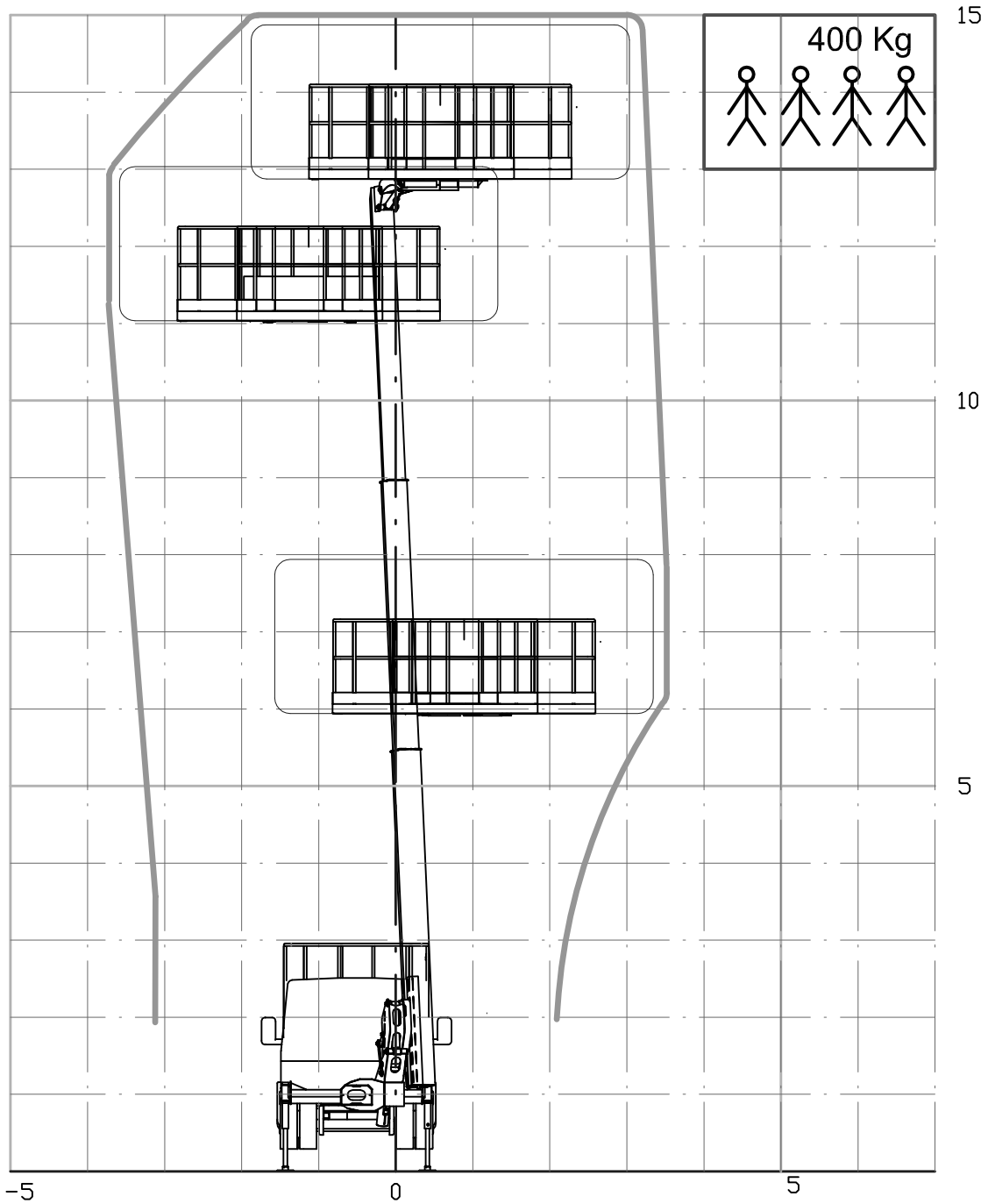
CODICE / CODE / REF.:

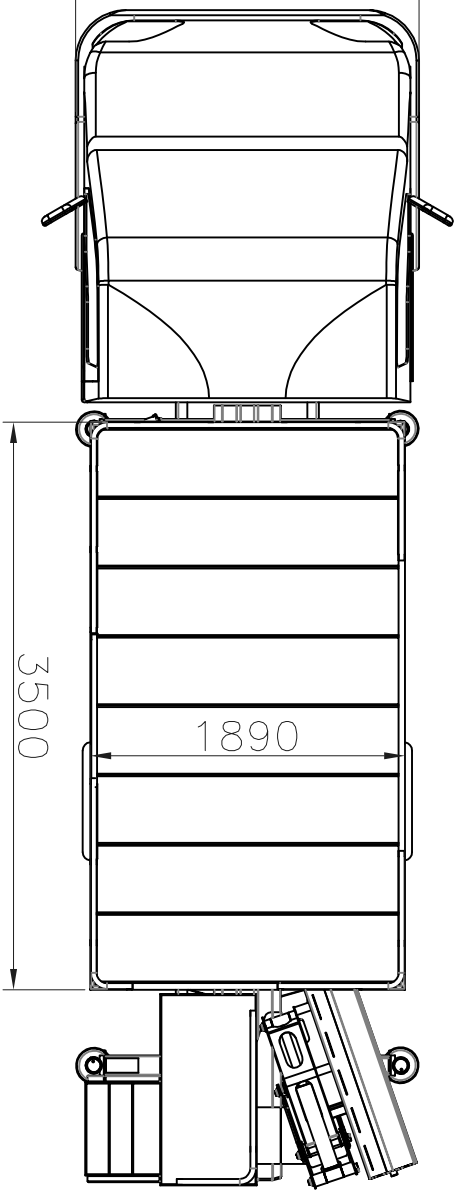
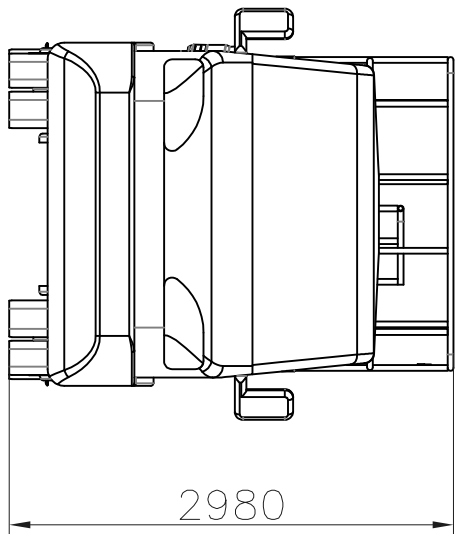
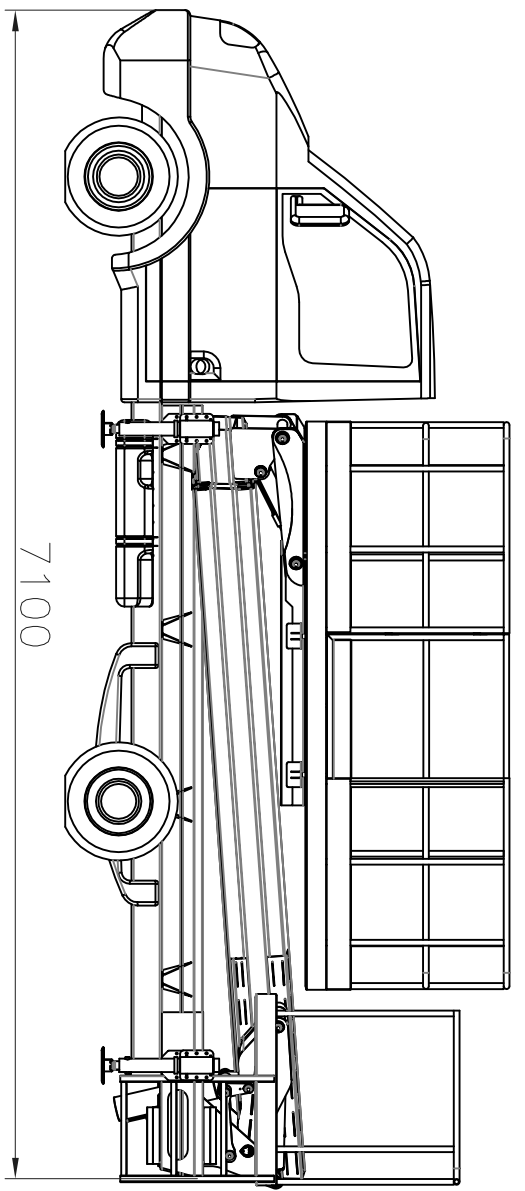
XS-A-001



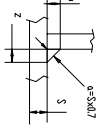
VEICOLO / VEHICLE / VEHICULE:
TRUCK

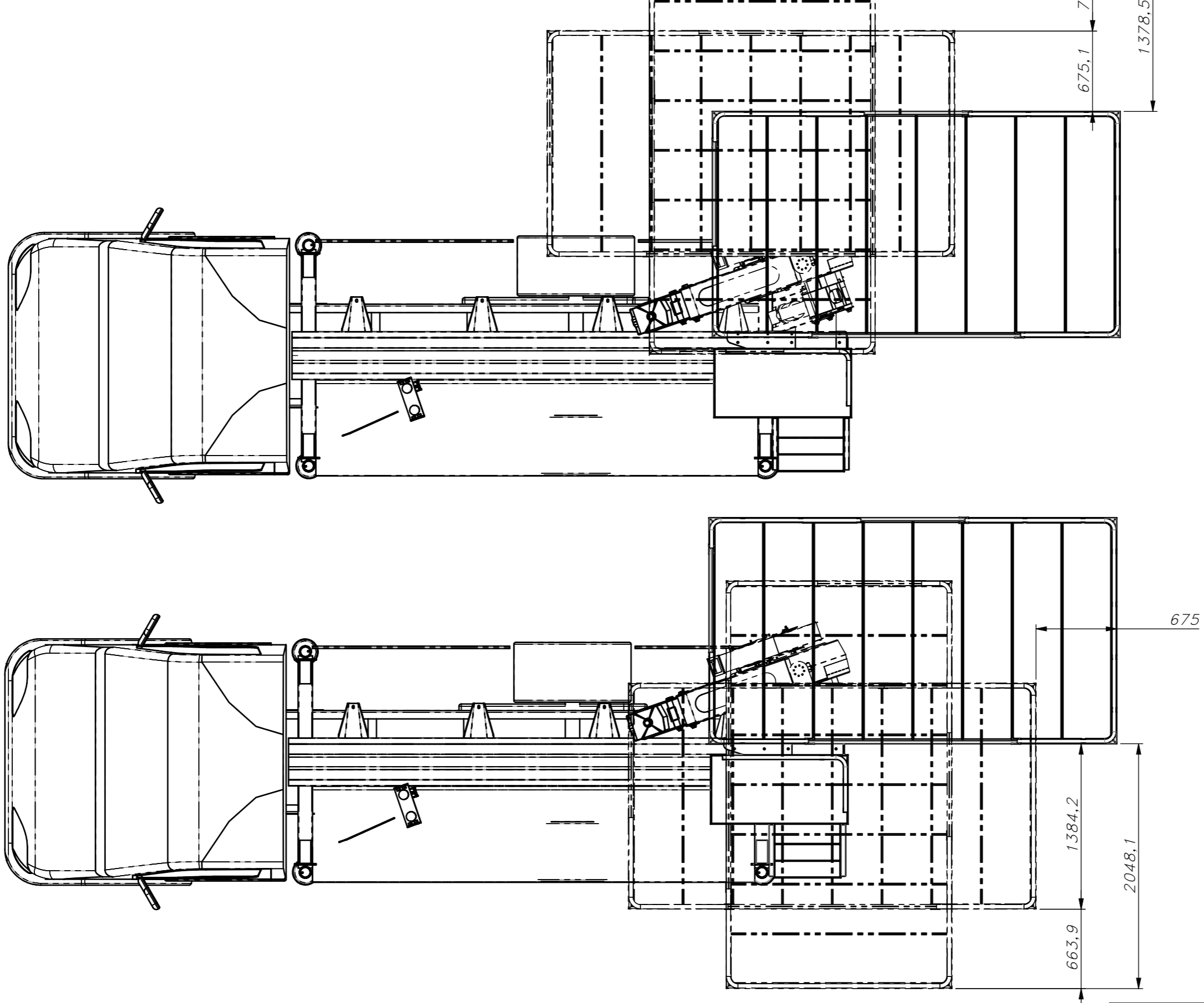
PTT / GWV / PTC:
5000 kg

PASSO / WHEELBASE / EMPATT:
3750





Rev.(0)		Descrizione		Data		Approvata	
		XSOLAR					
Codice _____ Materiale _____ Note _____		Sistema _____ Peso(kg) _____ Ref. Concessa _____		Data _____ Data _____ Data _____		Firma _____ Firma _____ Firma _____	
1 cordoni di saldatura non garantiti se l'intensità di spessore uguale a 4,0 volte lo spessore della parte senza da collegare		Tolleranza generale classe di precisione media UNI EN20471 Angolari (90°) UNI 1331 4287/1 e UNI 4200		Disegnato _____ Controlato _____ Approvato _____		Foglio 1 di _____	
		Saldature superiori a 5mm da o più passanti					



XSOLAR

