

Direct Forklift and Equipment

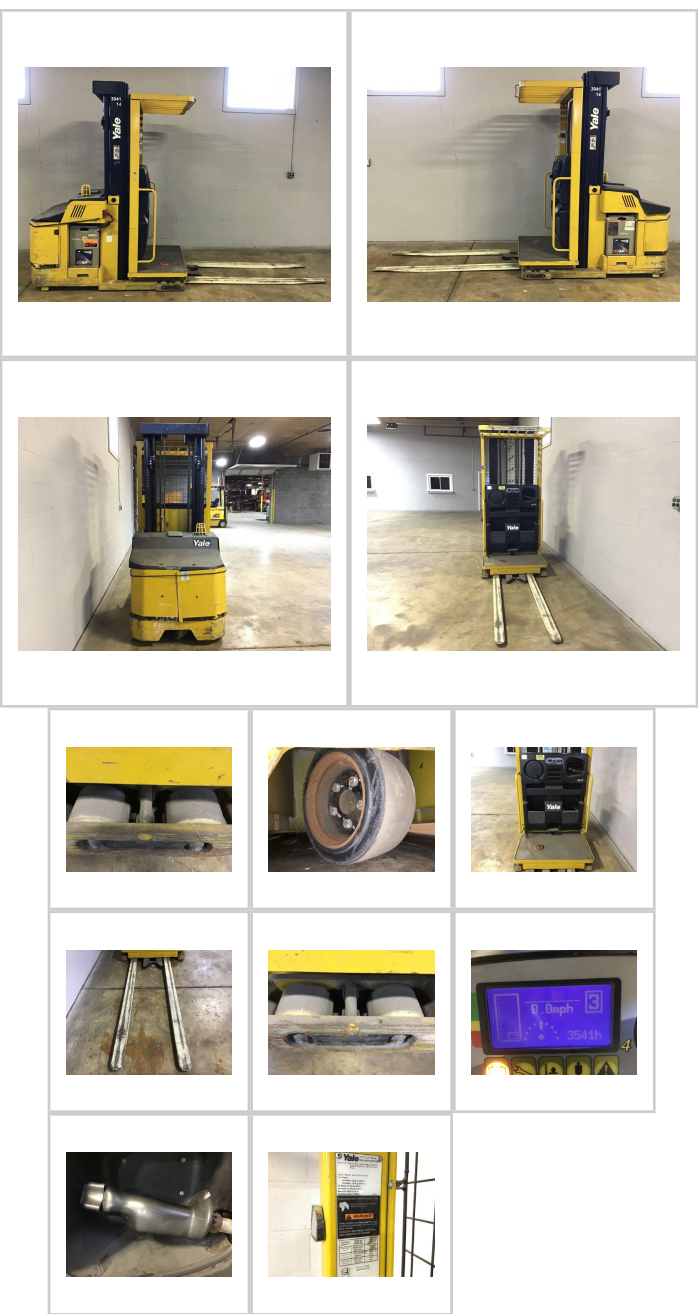
7885 Southern Blvd, Boardman OH 44512

www.directforklift.com

330.726.4050

YT4173N

Make	YALE
Model	OS030EFN24TE095
Serial Number	D801N04173N
Year	2015
Hours	3541
Capacity	3000
Tire Type	Cushion
Fuel	ELECTRIC
Hydraulic Controls	Hand Control
Hydraulic Functions	One
Mast Height Lowered	94.75
Max Lift Height	213
Free Lift	No
Mast Stage	Three
Fork Length	72.25
Drive Tire Size	12x5.5x8
Steer Tire Size	
Attachments	
Key Included?	Yes
Weight	4944
Battery Included	Yes
Battery Voltage	24
Unit Operating?	Yes



Fork Condition	Good
Upright Condition	Good
Lift Cylinder Condition	Good
Hydraulics Condition	Good
Carriage Condition	Good
Drive Axle Condition	Good
Brakes Condition	Good
Parking Brake Condition	Good
Shift Action Condition	Good
Steer Axle Condition	Good
Sheet Metal Condition	Fair
Drive Tire Condition	Good
Drive Tire Tread	75%
Steer Tire Condition	
Steer Tire Tread	
Electrical System Condition	Good
Seat Condition	
Lights Condition	Good
Drive Motor	Good
Hydraulic Pump Motor	Good
Pwr Strg Motor	Good

Shipping dimensions in inches (")

Length	81.25	Add fork length or attachment dimensions when applicable
Width	41.25	
Height	94.75	

Contact us for additional information on this unit!!!