

**OKADA Silent Crusher**

# **TS-WB950V**

# **HR**

## **Parts list**

(Applicable S/N is 2151 and after)



230710TM  
T113402d

## **OKADA crushing & cutting equipment important safety instruction**

### **During operation**



#### **DANGER**

1. Keep all personnel clear of the crushing / cutting area (in and around the demolished building) during operation.



#### **DANGER**

2. Protect the operator from falling objects. Equip the carrier with window protection and falling object protection. Above all, do not operate the machine in such a way that objects could fall toward persons.



#### **WARNING**

3. Maintain carrier machine stability by keeping it positioned on a firm, level surface. Exercise special care when operation on top of debris, or on a sloping surface.



#### **WARNING**

4. Work should be performed directly in front of, or in back of, an excavator with an attachment. The carrier is less stable if attachment is positioned over the side.



#### **WARNING**

5. Never lift up and move an object by gripping it with the crusher / cutter jaws may open and release the object.



#### **WARNING**

6. Never attach a cable or sling to an attachment and use it to hoist a load.
7. Match the attachment and carrier machine according to OKADA recommendation.
8. The operator must not leave the cab of the carrier unless the attachment has been safely lowered to the ground.

### **During inspection and maintenance**



#### **CAUTION**

1. Prior to any inspection or maintenance, determine that there is no residual pressure in the hydraulic circuit. Any remaining pressure could cause the cutter jaws to move unexpectedly, or cause an injury or oil spill.



#### **CAUTION**

2. Conduct maintenance and inspection only when the attachment jaws are closed. If jaws are to be left open, take safety measures to ensure that the jaws cannot close.

When removing the attachment from the carrier, position the attachment in a stable configuration. If necessary, block the attachment to prevent movement.

# Contents

Specifications.....	4
Tightening torque chart.....	4
Arm unit .....	5
Bracket units.....	10
Cylinder.....	16
Center swivel.....	18

## Specifications

Model	TS-WB950V HR	
Weight	1860 kg	4100 lbs
Overall length	2280 mm	90 inches
Overall width	1405 mm	55 inches
Maximum arm opening	950 mm	37 inches
Cutter blade length	150 mm	5.9 inches
Cutting force (at center)	605 kN	68 US ton
Operating pressure	30 MPa	4350 psi
Suitable carrier range	12 - 25 ton	12 - 25 US ton

The specifications above are subject to change without notice.

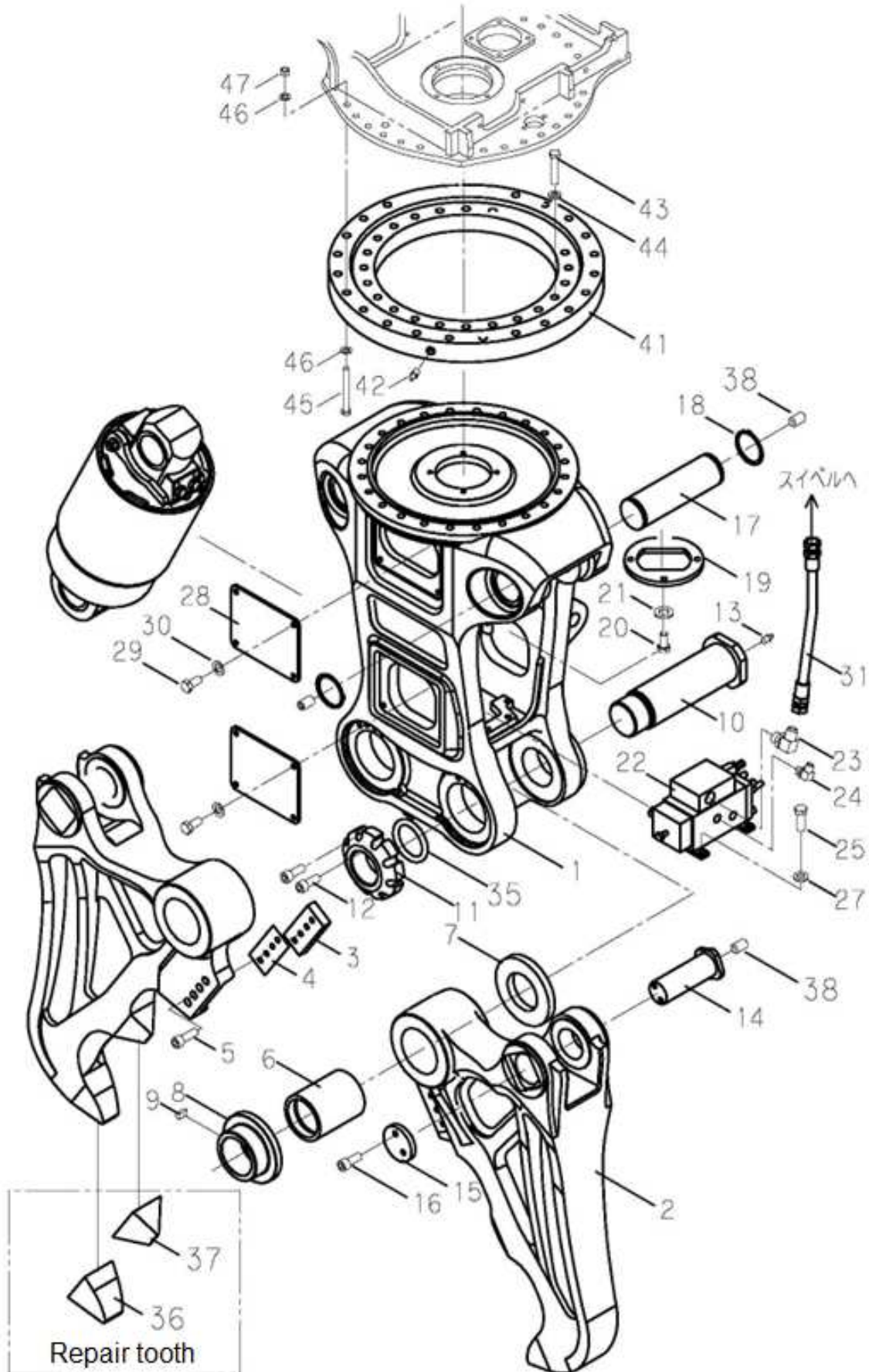
## Tightening torque chart

Common portion

Size	Tightening torque	
M10	88 Nm	65 ft-lb
M12	137 Nm	101 ft-lb
M14	196 Nm	145 ft-lb
M16	98 Nm	72 ft-lb
M16	255 Nm	188 ft-lb
M16	294 Nm	217 ft-lb
M18	343 Nm	254 ft-lb

Note : Check the tightness of whole bolts and nuts before day-working. And if necessary re-tighten them while following the instruction for maintenance.

## Drawing of Main body(1/2)



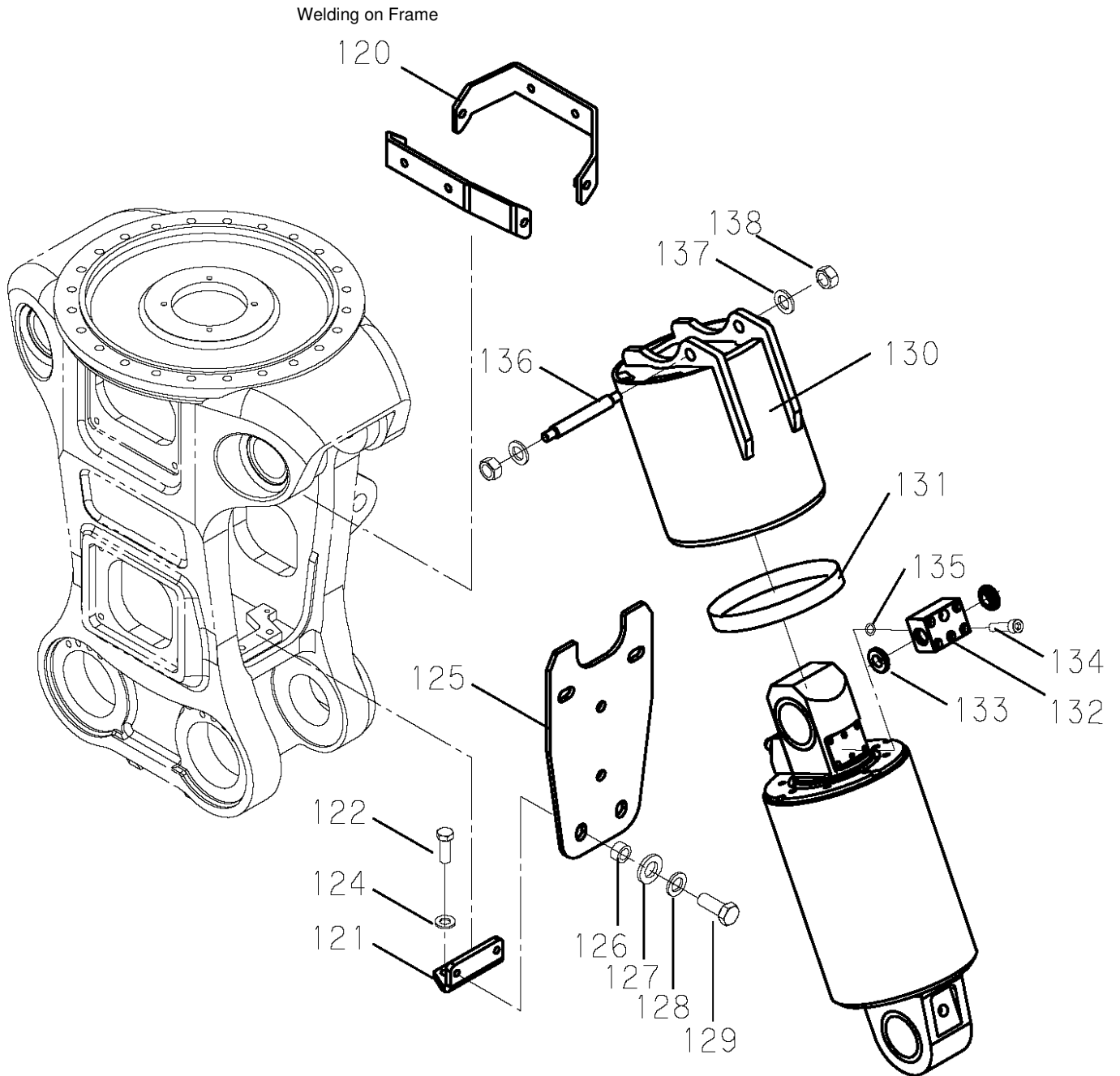
## Parts list of Main body (1/2)

No.	Part name	Part No.	Q'ty	Note
1	Box frame	T11330030	1	
2	Arm	T11330040	2	
3	Cutter blade	T11330200	2	
4	Cutter blade shim		-	
4-1	Cutter blade shim 0.3t	T11330210	-	
4-2	Cutter blade shim 0.5t	T11330230	-	
5	Cap screw	M12x35CS	8	
6	Arm bush	T11330140	2	
7	Spacer	T11330130	2	
8	Spacer sleeve	T11330110	2	
9	Sleeve key	T11060190	2	
10	Arm main pin	T11330090	2	
11	Main pin nut	T11330100	2	
12	Cap screw	M14x30CS	4	
13	Grease nipple	PT1/8A-GN	2	
14	Arm clevis pin	T11330150	2	
15	Clevis pin cap	T11330160	2	
16	Cap screw	M12x25CS	4	
17	Box clevis pin	T11330170	2	
18	C type stop ring	STW80	4	
19	Stopper plate	T11330190	1	
20	Hex bolt	M12x35HT	4	
21	Washer	M12WS-HT	4	
22	Speed valve	TSR06S-04S	1	
23	Adapter with O-ring BP24	90ORS19PFO19- AD	2	
24	Adapter with O-ring BP18	90ORS13PFO13- AD	4	
25	Hex bolt	M10x30HT	4	
27	Washer	M10WS-HT	4	
28	Box cover	T11330220	4	
29	Hex bolt	M12x25HT	16	
30	Washer	M12WS-HT	16	
31	Hydraulic hose	ORSP19x480-SC	2	
35	Spacer sleeve shim		-	
35-1	Spacer sleeve shim 0.3t	T11330330	-	
35-2	Spacer sleeve shim 0.5t	T11330340	-	

36	Repair arm point tooth	SJ85-055	-	
37	Repair arm center tooth	SJ85-037	-	
38	Set screw	M16x20SS	6	
41	Rotation bearing	CS30031	1	
42	Small grease nipple	PT1/8SA-GN	2	
43	Hex bolt	M16x85HT	24	
44	Washer	M16WS-HT	24	
45	Hex bolt	M16x105HT	20	
46	Washer	M16WS-HT	40	
47	Hex nut	M16NT	20	

T113402d

# Drawing of Main body (2/2)

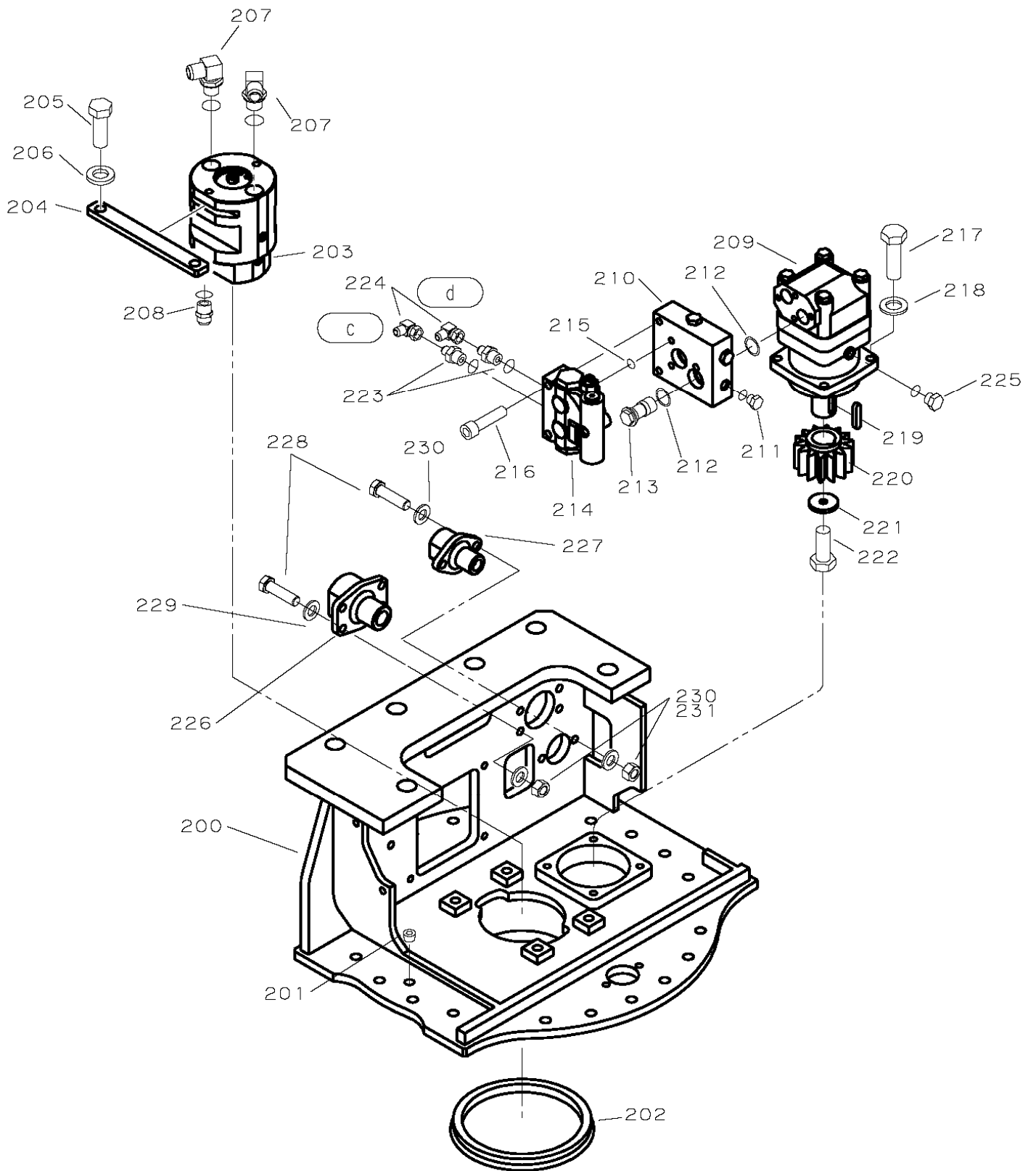




## Parts list of Arm unit (2/2)

No.	Part name	Part No.	Q'ty	Note
120	Side cover stay B	T11330320	2	
121	Side cover stay A	T11330310	2	
122	Hex bolt	M14x30HT	4	
124	Washer	M14WS-HT	4	
125	Side cover	T11330240	2	
126	Collar	T11290510	8	
127	Washer	MDS-22	8	
128	Washer	M14WS-HT	8	
129	Hex bolt	M14x40HT	8	
130	Rod cover	T11330251	2	
131	Cushion seal	250-S5M	2	
132	Rod cover flange	T11330080	2	
133	Nylon collar	T11330260	4	
134	Cap screw	M10x55CS	10	
135	O-ring	BP11	2	
136	Rod cover pin	T11330270	2	
137	Washer	M16WS-HT	4	
138	U-nut	M16NT-U	4	

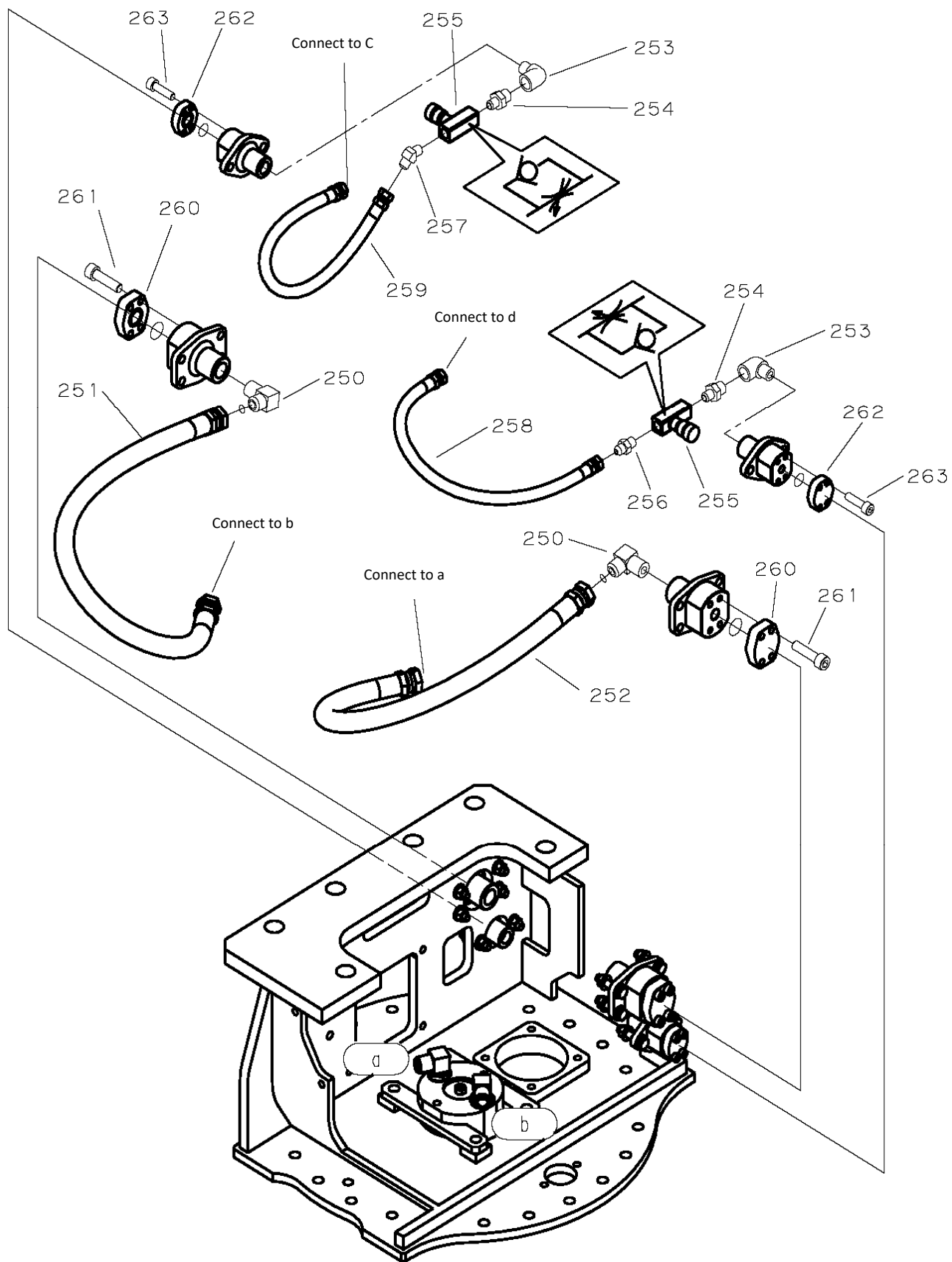
# Drawing of bracket units (1/3)



## Parts list of bracket units (1/3)

No.	Part name	Part No.	Q'ty	Note
200	Bracket unit	T11340470	1	
201	Sink plug	PT09-PLG	1	
202	V-ring	VR170A	1	
203	Center swivel(GTE type)	CS30517	1	
204	Center swivel key plate	CA42489a	2	
205	Hex bolt	M16x40HT	4	
206	Washer	M16WS-HT	4	
207	Adapter with O-ring BP24	90ORS19PFO19-AD	2	
208	Adapter with O-ring BP24	ORS19PFO19-AD	2	
209	Hydraulic motor	MDOMT361R	1	
210	Sub plate	CA38271b	1	
211	Hex plug with O-ring BP14	PFO09-6HPLG	4	
212	O-ring	BS29	4	
213	Banjo bolt	CA38271b-1	2	
214	HR valve	VBR160	1	
215	O-ring	BP16	2	
216	Cap screw	M12x60CS	3	
217	Hex bolt	M12x40HT	4	
218	Washer	M12WS-HT	4	
219	Hydraulic motor key	MDOMT361-KEY	1	
220	Pinion	CA43658a	1	
221	Pinion fix plate	CA43657a	1	
222	Hex bolt	M12x30HT	1	
223	Adapter with O-ring BP18	NPF09PFO13-AD	2	
224	Union adapter	90NPF09NPF09-UAD	2	
225	Hex plug with O-ring BP11	PFO06-6HPLG	1	
226	Hydraulic connection	T11340460	2	
227	Hydraulic connection	T11530300	4	
228	Hex bolt	M12x55HT	12	
229	Hex nut	M12NT	12	
230	Washer	M12WS-HT	24	

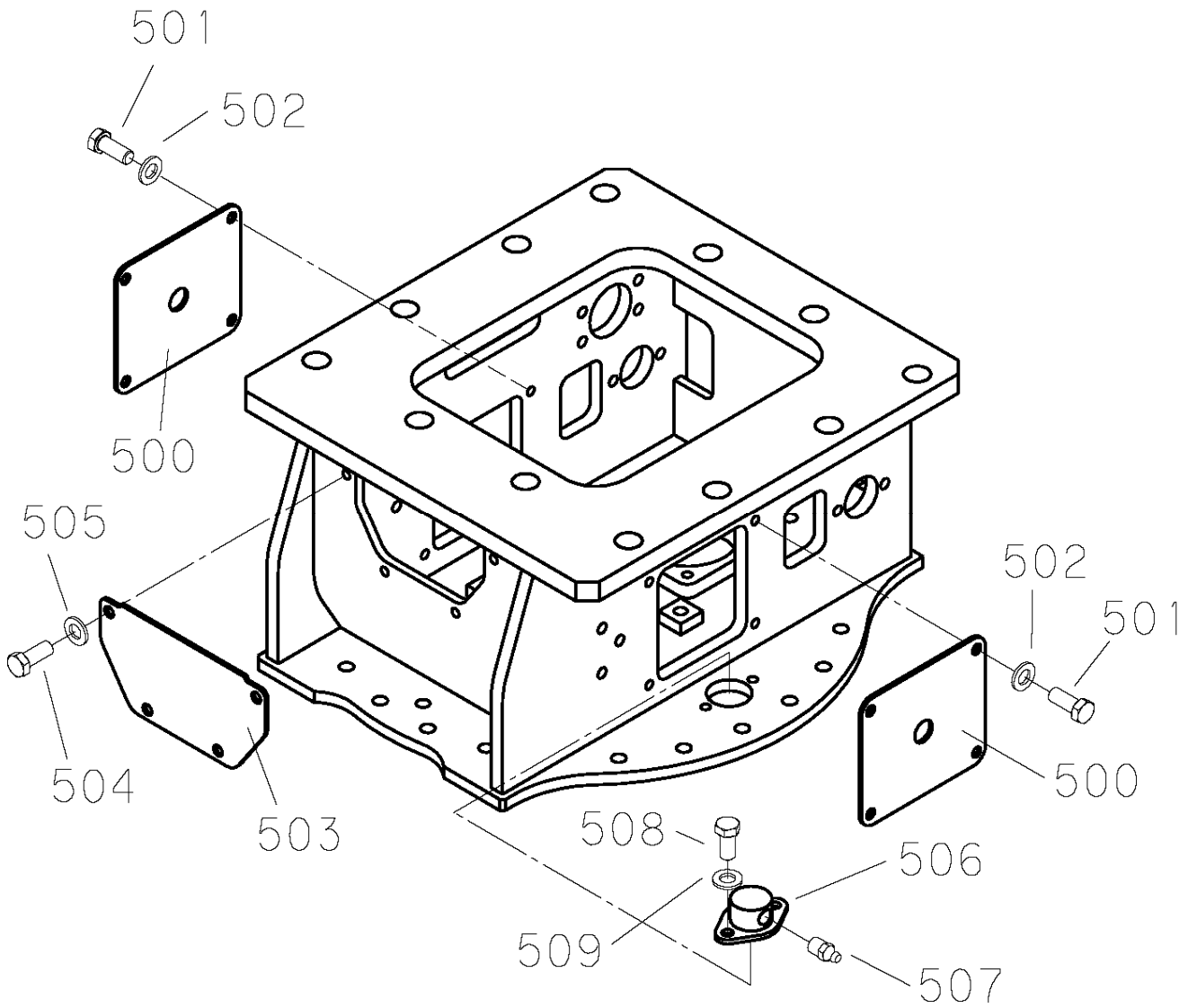
# Drawing of bracket units (2/3)



## Parts list of bracket units (2/3)

No.	Part name	Part No.	Q'ty	Note
250	Adapter	90ORS19PT19-AD	2	
251	Hydraulic hose	ORSP19x800	1	
252	Hydraulic hose	ORSP19x750	1	
253	Adapter elbow	90PT13PT13-STEL	2	
254	Nipple	PT13PT09-NP	2	
255	Throttle check valve	HT-728-03	2	
256	Adapter	NPF09PT09-AD	1	
257	Adapter	45NPF09PT09-AD	1	
258	Hydraulic hose	HA09x650	1	
259	Hydraulic hose	HA09x480	1	
260	End plate	T11340500	2	
261	Cap screw	M10x40CS	8	
262	End plate	T11530320	2	
263	Cap screw	M8x30CS	8	

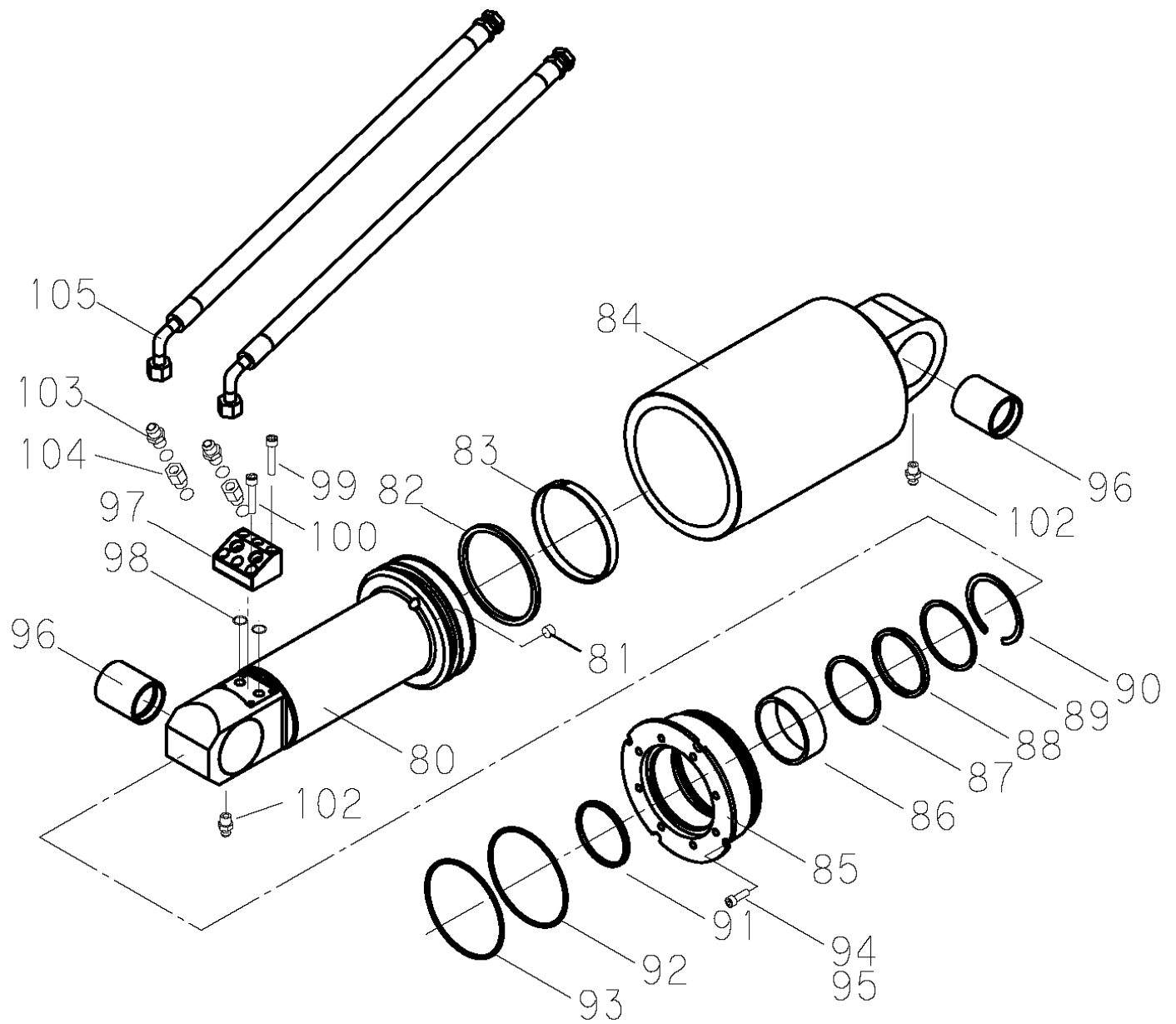
### Drawing of bracket units (3/3)



### Parts list of bracket units (3/3)

No.	Part name	Part No.	Q'ty	Note
500	Bracket side cover	T11340490	1	
501	Hex bolt	M12x35HT	8	
502	Washer	M12WS-HT	8	
503	Bracket front cover	T11340480	1	
504	Hex bolt	M12x30HT	4	
505	Washer	M12WS-HT	4	
506	Grease nipple cover	CA43900	1	
507	Grease nipple	PT1/8A-GN	1	
508	Hex bolt	M12x25HT	2	
509	Washer	M12WS-HT	2	

# Drawing of Cylinder

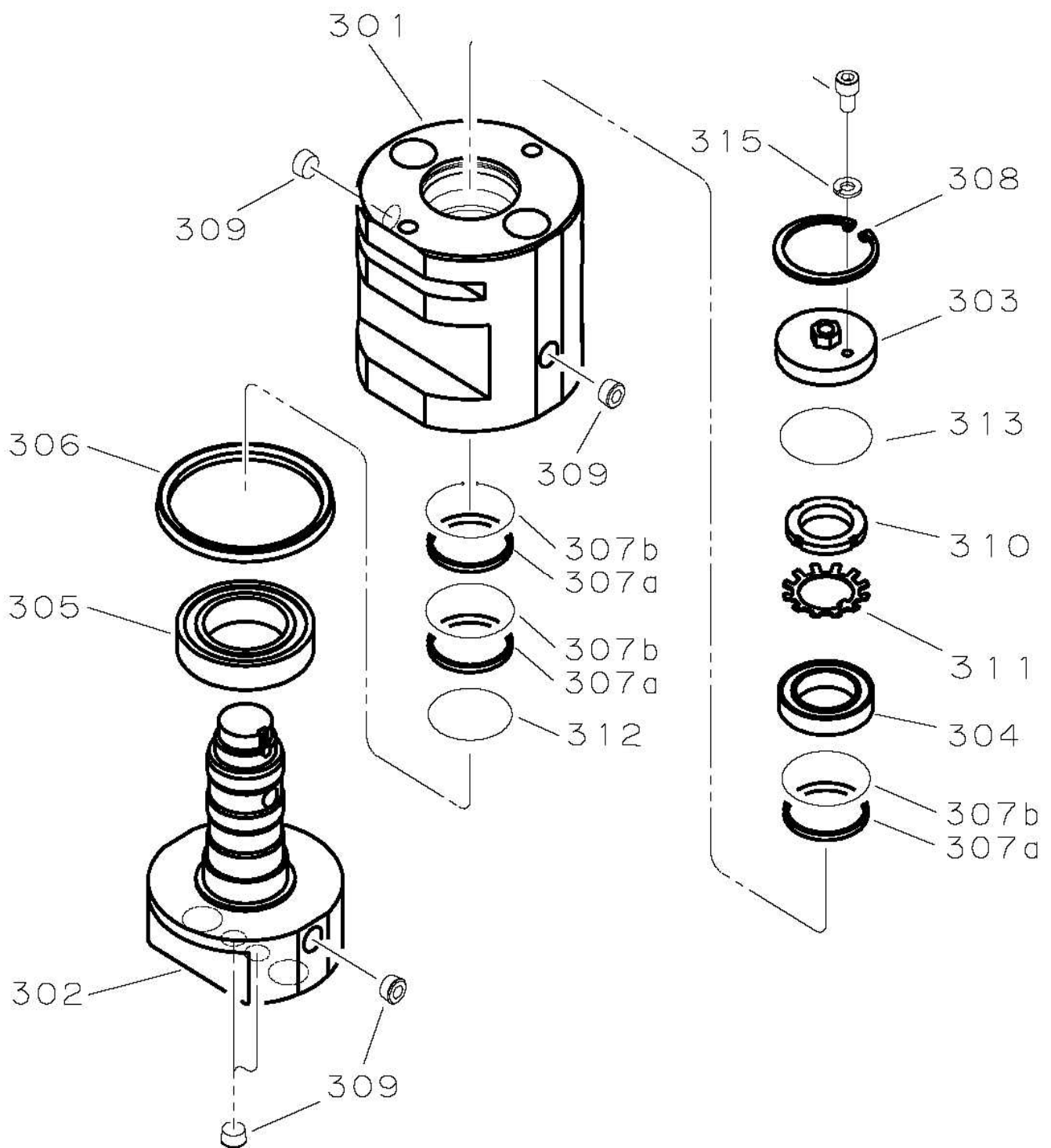




## Parts list of Cylinder

No.	Part name	Part No.	Q'ty	Note
80	Piston rod	T11330060-1	2	
81	Sink plug	PT13-PLG	2	
82	Piston ring packing	ST331GW	2	
83	Piston wearing	WR331x25	2	
84	Cylinder tube	T11330060-2	2	
85	Cylinder cap	T11330060-3	2	
86	Cap bush	T11330060-4	2	
87	Backup ring	T3U2611653	2	
88	U packing	U261S	2	
89	Cap ring	T11330060-5	2	
90	C type stop ring	RSH170	2	
91	Dust seal	D261K	2	
92	O-ring	BG210	2	
93	Back up ring	T3G210	2	
94	Cap screw	M10x20CS	4	
95	Spring washer CS	M10C	2	
96	Clevis bush	T11330180	4	
97	Rod flange	T11330070	6	
98	O-ring	BP22	6	
99	Cap screw	M10x55CS		
100	Cap screw	M10x40CS	4	
			4	
102	Grease nipple	PT1/8A-GN	4	
103	Adapter with O-ring BP18	ORS13PFO13-AD	4	
104	Bushing with O-ring BP18	PFO13PFO13-BSG	2	
105	45 degrees bent hose	OP13x680ORS4*O-SC	2	

# Drawing of Center swivel



## Parts list of Motor assembly

No.	Part name	Part No.	Q'ty	Note
301	Swivel rotor	GTE-RTR	1	
302	Swivel shaft	GTC-SHAFT	1	
303	Swivel cap	GTE-CAP	1	
304	Ball bearing	6908ZZ-BRG	1	
305	Ball bearing	6011ZZ-BRG	1	
306	V-ring	VR-100A	1	
307a	Rotor seal	RSR50x42	3	
307b	O-ring	AAS568-227	3	
308	C type stop ring	RTW65	1	
309	Sink plug	PT09-PLG	6	
310	Bearing nut	M35NT-AN07	1	
311	Bearing washer	M35WS-AW07	1	
312	O-ring	BG50	1	
313	O-ring	BG60	1	
314	Cap screw	M6x6CS	1	
315	Spring washer	M6S	1	

**\*Special tool (CA30552) is necessary for seal replacement.**

**\*No.306, 307a/b, 312, and 313 are supplied as a package "Center swivel seal kit"  
Parts number is GTE-SK**







4-1-18, Minato-ku, Kaigan-dori, Osaka, 552-0022 Japan  
Tel: 81-(0)6-6576-1268  
Fax: 81-(0)6-6576-1516  
Email: [sales@aiyon.co.jp](mailto:sales@aiyon.co.jp)  
<http://www.okada-aiyon.com>