

Self-erecting tower crane 32 tm on self-propelled undercarriage



Specifications

Self-erecting tower crane 32 tm

- jib length 30 m and lifting height 22,3 m or maximum 30,3 m with raised jib
- maximum capacity 4000 kg, lifting, trolley and slewing motion controlled by inverter
- octagonal galvanised mast and compact jib with lattice construction
- equipped with maximum load and load moment safety systems
- assembly and disassembly via radio control
- steel counterweight of 18.000 kg with a slewing radius of 2,1 m, counterweight is removable
- 3 x LED lighting in the jib
- selector switch for crane configurations

Self-propelled undercarriage 4WDS

- 4-wheel drive, choice of two driving speeds via inverter, controlled by pushbutton control
- 4-wheel independent steering
- heavy duty axles with hub reduction and 8 pcs 10.00 x 20 HD tyres
- can be driven with the crane fully erected
- four extendable hydraulic outriggers with a base of 3,9 x 4,0 m
- power supply 400 V 5P 32A - 3 x 25 A
- transport dimensions: (l x w x h) 15,7 m x 2,9 m x 3,3 m, total weight 36,8 ton

Hijstabel

Radius (m)	10,1	11,0	12,0	16,0	17,4	23,0	25,0	26,0	28,0	30,0
capacity (kg)	4.000	3.600	3.215	2.230	2.000	1.410	1.265	1.205	1.095	1.000



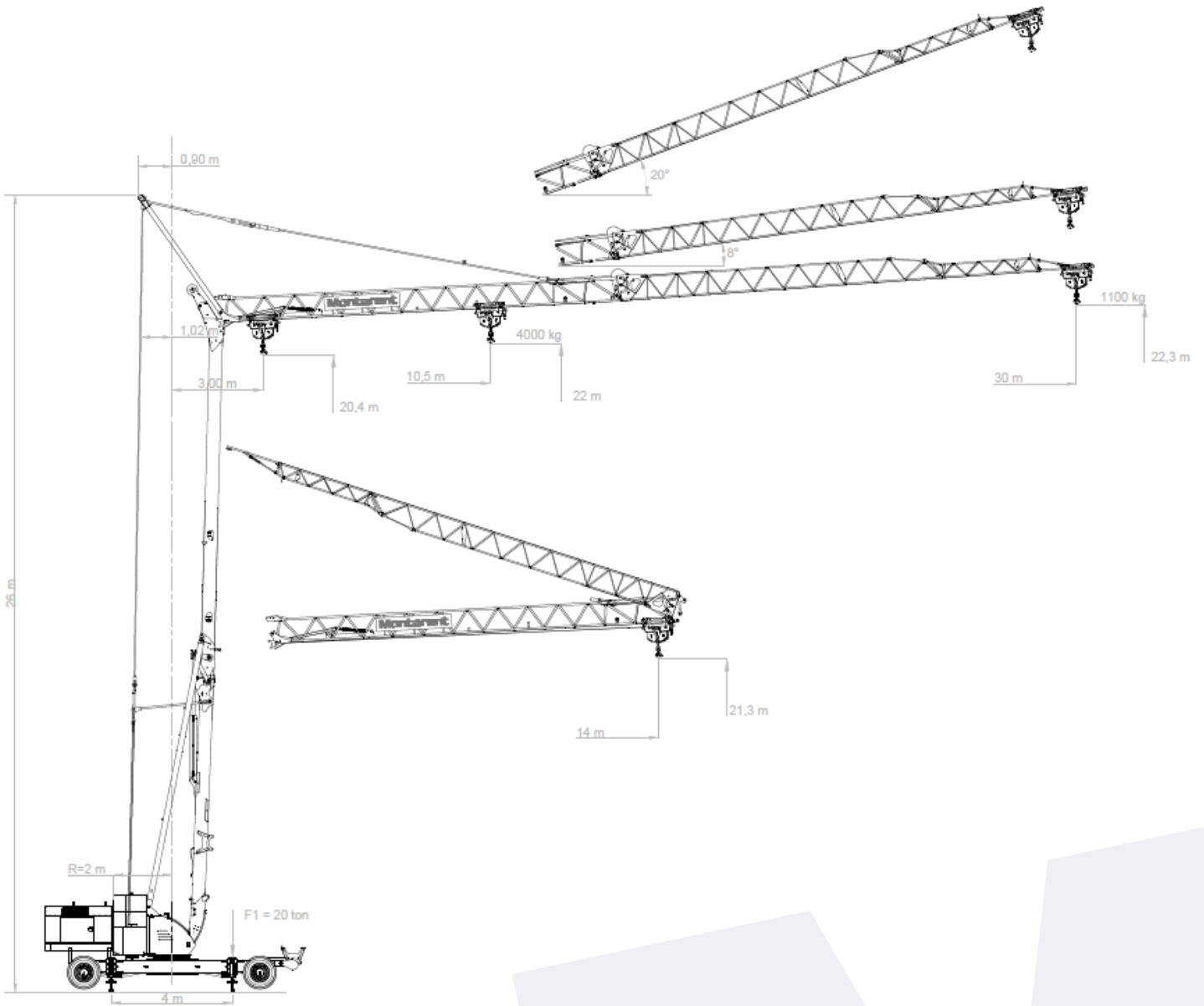
T: +31(0)251-218188



info@montarent.nl
www.montarent.nl



Duiveland 4
1948 RB Beverwijk



T: +31(0)251-218188



info@montarent.nl
www.montarent.nl



Duiveland 4
1948 RB Beverwijk