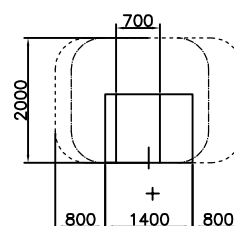
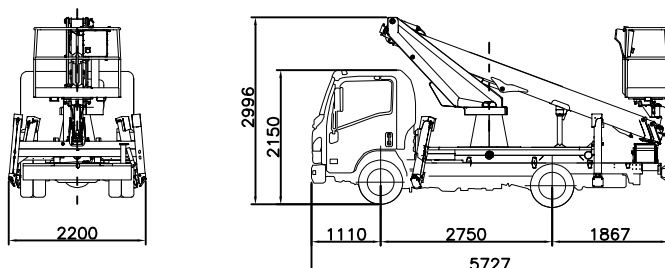


MODELLO / MODEL / MODELE: NEW EUROSFILO 17/2/7(8.5) HQ IN SAGOMA	CODICE / CODE / REF.: 30FT00003(*)
--	--

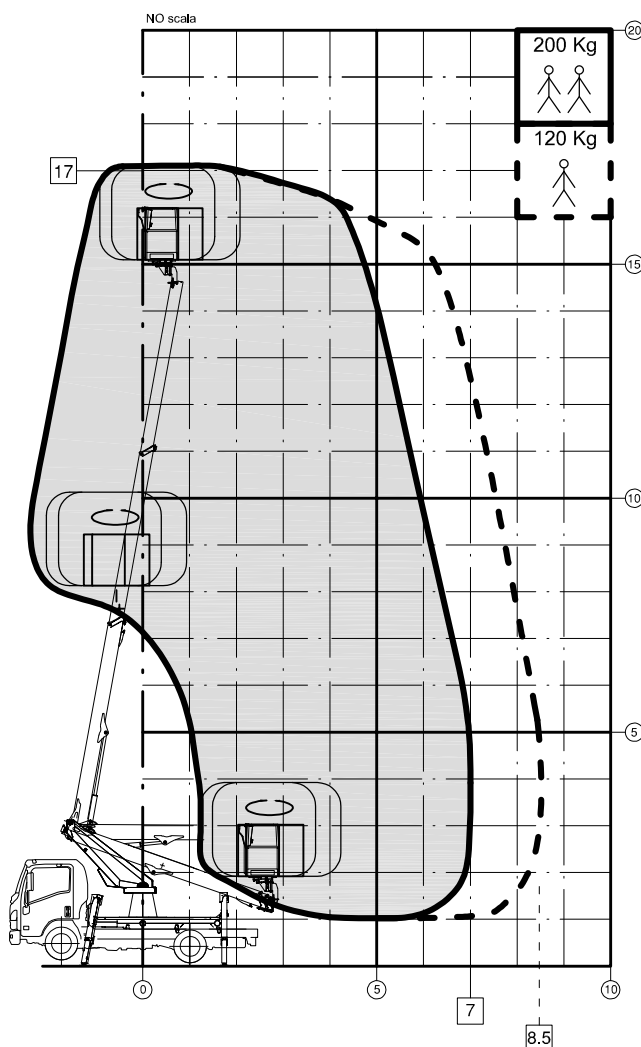
VEICOLO / VEHICLE / VEHICULE: ISUZU M21	PTT / GVW / PTC: 3500 kg	PASSO / WHEELBASE / EMPATT: 2750 mm
---	------------------------------------	---

(*) Kit "A" Autocarro non fornito

CODICI MONTAGGIO CORRISPONDENTI:



Area lavoro navicella
Working area basket
Zone de travail nacelle



CARATTERISTICHE TECNICHE TECHNICAL FEATURES DONNES TECHNIQUES	
Altezza di lavoro Working height Hauteur de travail	17m
Portata Working load Charge utile	200 (120) Kg
Raggio max. di lavoro Working range Etendu latérale max.	7 (8,5) m
Peso Total weight Poids	3350 Kg
Articolazione braccio superiore Upper boom articulation Articulation bras supérieur	-23°+80°
Articolazione braccio inferiore Lower boom articulation Articulation bras inférieur	-
Articolazione Jib Jib articulation Articulation Jib	-
Rotazione torretta Turret rotation Rotation de la tourelle	360°
Ciclo completo di manovra Mnoeuving complete cycle Cycle complet de manoeuvre	5.30 min
Isolamento braccio superiore Upper arm isolation Isolement du bras supérieur	-
Isolamento braccio inferiore Lower arm isolation Isolement du bras inférieur	-
Sollevarmento materiale Material lifting Matériel de levage	-
Conforme in conformity with en conformité avec	CE

NOTA: con Navicella in Vetroresina sbraccio ridotto di 0,75m
NOTE: with fiberglass basket reduced max. lateral outreach off 0,75m
NOTE: avec nacelle en fibre de verre déport latéral réduite de 0,75m

NOTA: con 80Kg di portata in navicella sbraccio massimo 9m
NOTE: with 80Kg capacity in the basket max. lateral outreach 9m
NOTE: avec 80Kg capacité dans le panier max. déport latéral 9m

CO.ME.T OFFICINE S.p.A. si riservano il diritto di apportare modifiche in sede esecutiva senza preavviso
CO.ME.T OFFICINE S.p.A. reserves the right to make any technical modification without notice
CO.ME.T OFFICINE S.p.A. se réservent le droit d'apporter des modifications techniques sans préavis