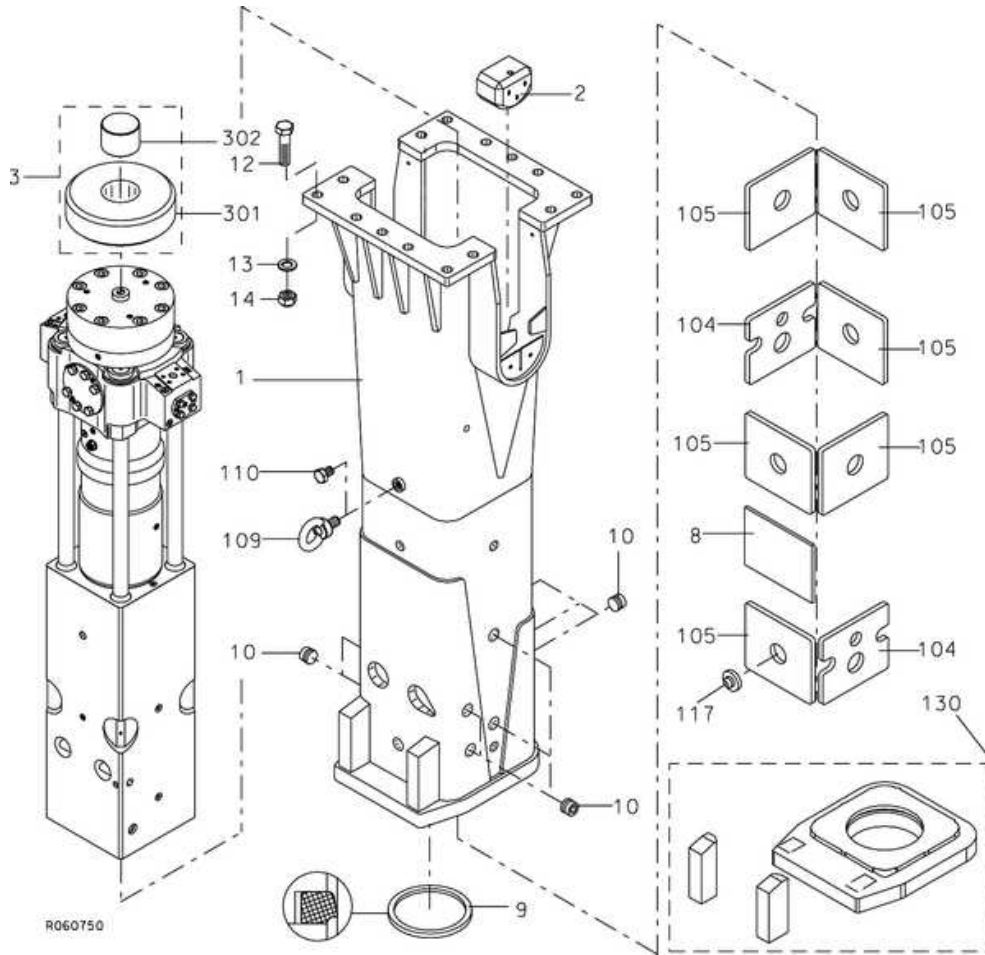


RAMMER G 100

COPYRIGHT © 1996-2017 SANDVIK MINING AND CONSTRUCTION OY, BREAKERS LAHTI

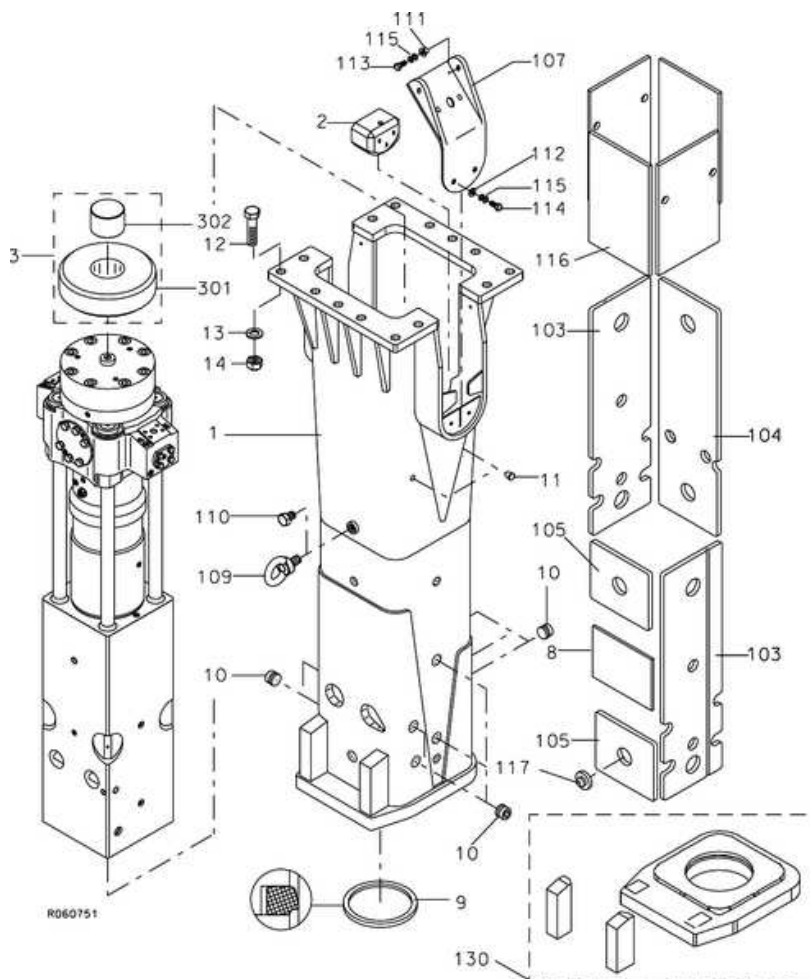
Housing unit STD

[10AAB0159-UP]



Housing unit CITY

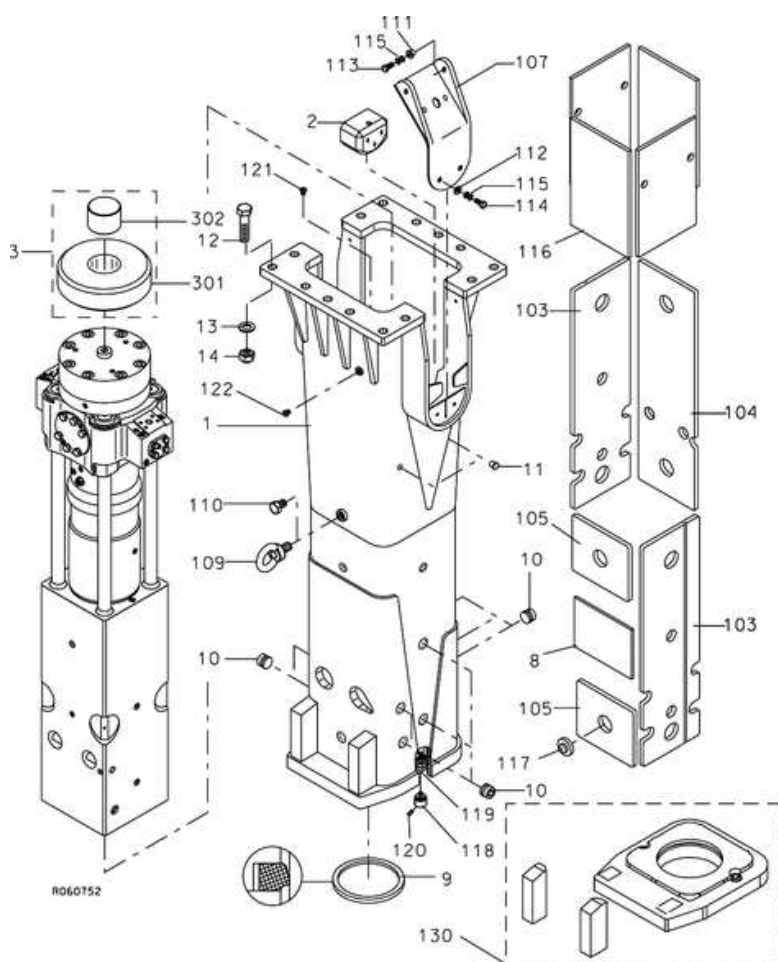
[10ADB0159-UP]



Item	Description	Part no.	Specification	Note	Qty
1	Housing (incl. parts 103-117)	104067			1
2	Pad	300641			2
3	Buffer (incl. parts 301 and 302)	300642			1
8	Shield plate	103117			1
<i>For more information, see "Rammer G 100 parts manual, Publ. no. A000126E" in Bulletins.</i>					
9	Seal	102144			1
10	Rubber plug	400676	D50		9
11	Rubber plug	400566	D25		4
12	Hex. screw	90520	M36x140-8.8 DIN 931		14
13	Washer	90521	39 DIN 126		14
14	Lock nut	90519	M36-8 DIN 985		14
103	Wear plate	104126			2
104	Wear plate	104125			1
105	Wear plate	104124			2
107	Shield plate	102945			2
109	Lifting eye	901464	M36 DIN 580		1
110	Hex. screw	901465	M36x40-8.8 DIN 933		1
111	Middle bushing	102944			4
112	Middle bushing	102939			4
113	Hex. screw	91050	M12x40-8.8 DIN 933		4
114	Hex. screw	90513	M12x30-8.8 DIN 933		4
115	Lock washer	91012	M12 NORD-LOCK		8
116	Damper plate	102564			4

117	Pin	102389	2
130	Wear parts	160429	1
301	Buffer	101689	1
302	Pin	101342	1
200	Label set (incl. part 201.1)	104349	1
201.1	Safety label set	161564	1

Housing unit CITY-JET
[10AEB0159-UP]

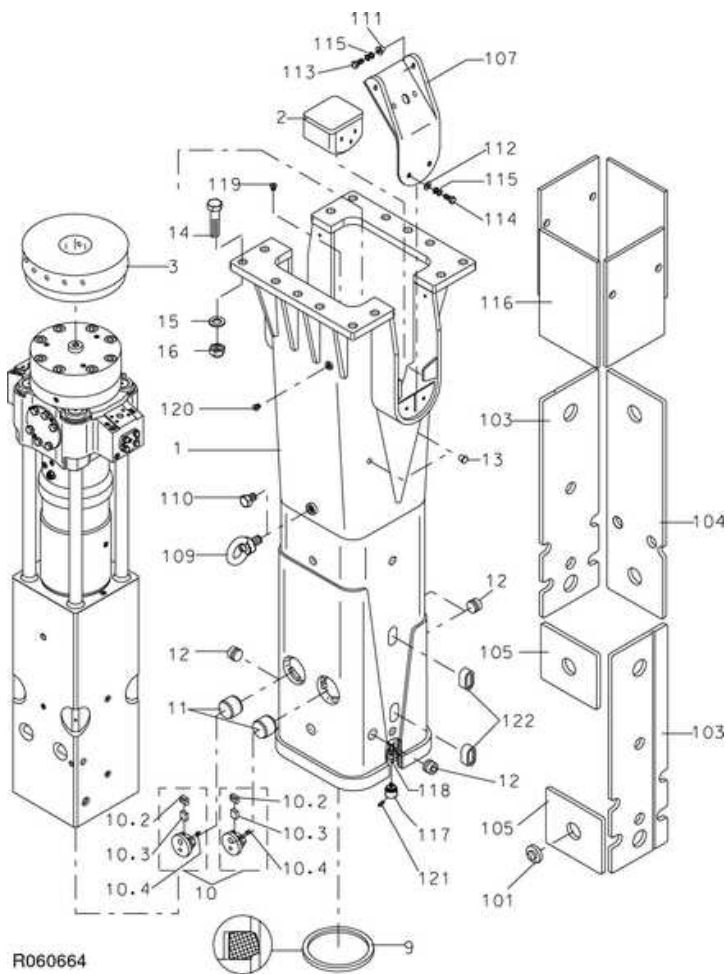


Item	Description	Part no.	Specification	Note	Qty
1	Housing (incl. parts 103-122)	104121			1
2	Pad	300641			2
3	Buffer (incl. parts 301 and 302)	300642			1
8	Shield plate	103117			1
9	Seal	102144			1
10	Rubber plug	400676	D50		9
11	Rubber plug	400566	D25		4
12	Hex. screw	90520	M36x140-8.8 DIN 931		14
13	Washer	90521	39 DIN 126		14
14	Lock nut	90519	M36-8 DIN 985		14
103	Wear plate	104126			2
104	Wear plate	104125			1
105	Wear plate	104124			2

107	Shield plate	102945		2
109	Lifting eye	901464	M36 DIN 580	1
110	Hex. screw	901465	M36x40-8.8 DIN 933	1
111	Middle bushing	102944		4
112	Middle bushing	102939		4
113	Hex. screw	91050	M12x40-8.8 DIN 933	4
114	Hex. screw	90513	M12x30-8.8 DIN 933	4
115	Lock washer	91012	M12 NORD-LOCK	8
116	Damper plate	102564		4
117	Pin	102389		2
118	Guide	103047		2
119	Hose assembly	104122		1
120	Nozzle	102783		2
121	Plug	90403	BSP 1/4	1
122	Plug	90424	BSP 1/2	1
130	Wear parts	160430		1
301	Buffer	101689		1
302	Pin	101342		1
200	Label set (incl. part 201.1)	104349		1
201.1	Safety label set	161564		1

Housing unit TUNNEL

[10TEB0080-UP]

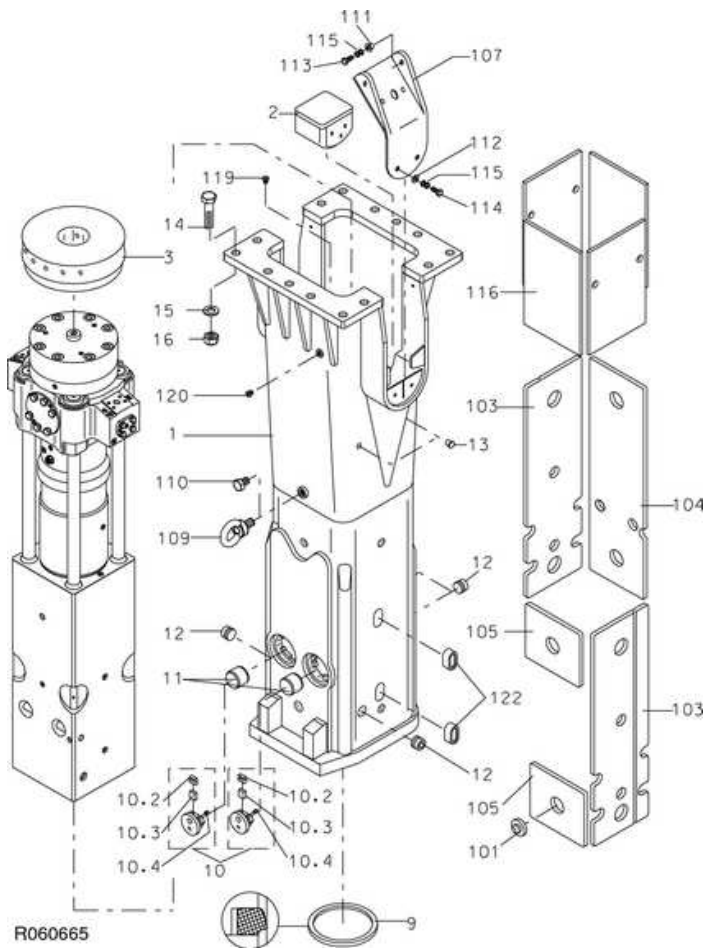


Item	Description	Part no.	Specification	Note	Qty
------	-------------	----------	---------------	------	-----

1	Housing (incl. parts 101-122)	104187		1
2	Pad	103409		2
3	Buffer	104137		1
9	Seal	102144		1
10	Cover (incl. parts 10.2-10.4)	106081		2
10.2	Bar	106083		1
10.3	Buffer	106082		1
10.4	Split pin	90327		1
11	Tool retaining pin	103394		2
12	Rubber plug	400676	D50	4
13	Rubber plug	400566	D25	4
14	Hex. screw	90520	M36x140-8.8 DIN 931	14
15	Washer	903003	37 DIN 6916	14
16	Lock nut	90519	M36-8 DIN 985	14
101	Pin	102389		8
103	Wear plate	104126		2
104	Wear plate	104125		1
105	Wear plate	104124		2
107	Shield plate	102945		2
109	Lifting eye bolt	901464	M36 DIN 580	1
110	Hex. screw	901465	M36x40-8.8 DIN933	1
111	Middle bushing	102944		4
112	Washer	902815	D13	4
113	Hex. screw	91050	M12x40-8.8 DIN 933	4
114	Hex. screw	91088	M12x20-8.8 DIN 933	4
115	Lock washer	91012	M12 NORD-LOCK	8
116	Damper plate	102564		4
117	Guide	103047		2
118	Hose assembly	104122		1
119	Flange plug	90403	BSP 1/4	1
120	Flange plug	90424	BSP 1/2	1
121	Nozzle	102783	SSCO B1/8-GG-SS5	2
122	Rubber plug	300950		2
200	Label set (incl. part 201.1)	105085		1
201.1	Safety label set	161564		1

Housing unit HARD

[10TRD0006-UP]

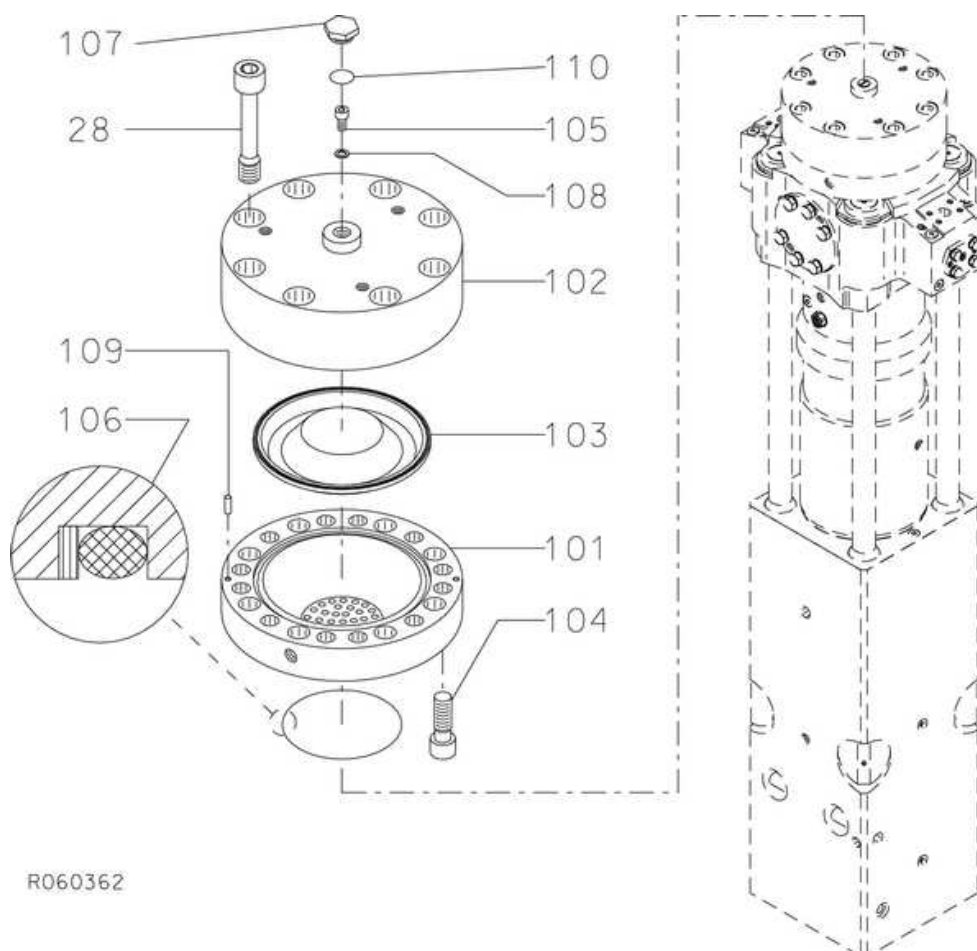


Item	Description	Part no.	Specification	Note	Qty
1	Housing (incl. parts 101-122)	106286			1
2	Pad	103409			2
3	Buffer	104137			1
9	Seal	102144			1
10	Cover (incl. parts 10.2-10.4)	106081			2
10.2	Bar	106083			1
10.3	Buffer	106082			1
10.4	Split pin	90327			1
11	Tool retaining pin	103394			2
12	Rubber plug	400676	D50		4
13	Rubber plug	400566	D25		4
14	Hex. screw	90520	M36x140-8.8 DIN 931		14
15	Washer	903003	37 DIN 6916		14
16	Lock nut	90519	M36-8 DIN 985		14
101	Pin	102389			8
103	Wear plate	104126			2
104	Wear plate	104125			1
105	Wear plate	104124			2
107	Shield plate	102945			2
109	Lifting eye bolt	901464	M36 DIN 580		1
110	Hex. screw	901465	M36x40-8.8 DIN933		1
111	Middle bushing	102944			4
112	Washer	902815	D13		4
113	Hex. screw	91050	M12x40-8.8 DIN 933		4
114	Hex. screw	91088	M12x20-8.8 DIN 933		4
115	Lock washer	91012	M12 NORD-LOCK		8
116	Damper plate	102564			4
119	Flange plug	90403	BSP 1/4		1
120	Flange plug	90424	BSP 1/2		1
122	Rubber plug	300950			2

200	Label set (incl. part 200.1)	105085	1
200.1	Safety label set	161564	1

Accumulator

[10AAA0144-UP] [10ADA0144-UP] [10AEA0144-UP] [10TEB0036-UP] [10TRD0036-UP]



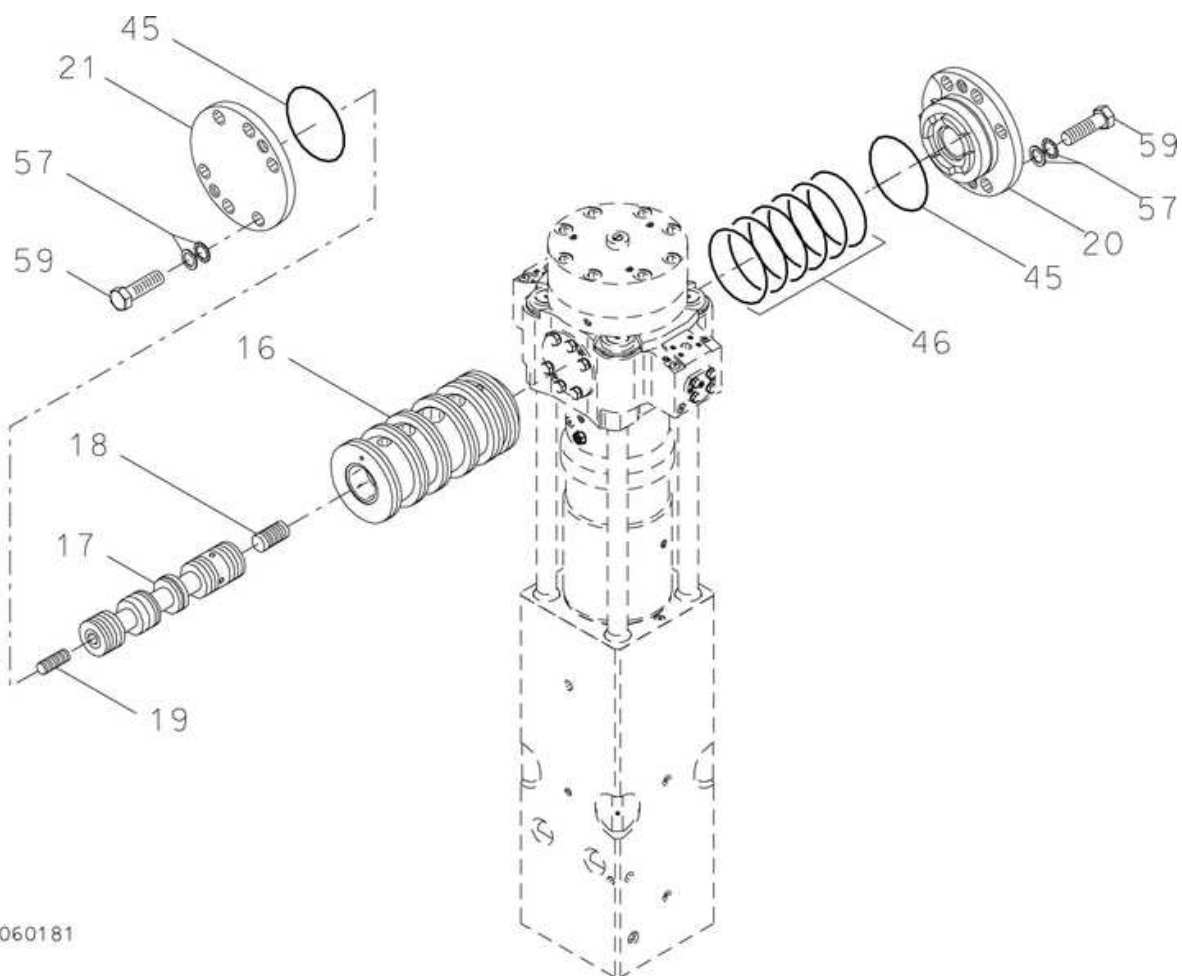
R060362

Item	Description	Part no.	Specification	Note	Qty
1	Accumulator (incl. parts 101-110)	110561			1
101	Accumulator bottom	110560			1
102	Accumulator cover	100491			1
103	Membrane	172307			1
104	Accumulator screw	40528			12
105	Filling plug	40368			1
106	Seal	40536	D144	*	1
107	Shield plug	154015			1
108	Usit-ring	90056	8-13.9-1	*	1
109	Parallel pin	90304	10m6x24 DIN 6325		2
110	O-ring	910006	D23	*	1
28	Accumulator screw	300711			8

*) Are included in seal set

Main valve

[10AAA0092-UP] [10ADA0092-UP] [10AEA0092-UP] [10TEB0005-UP] [10TRD0005-UP]



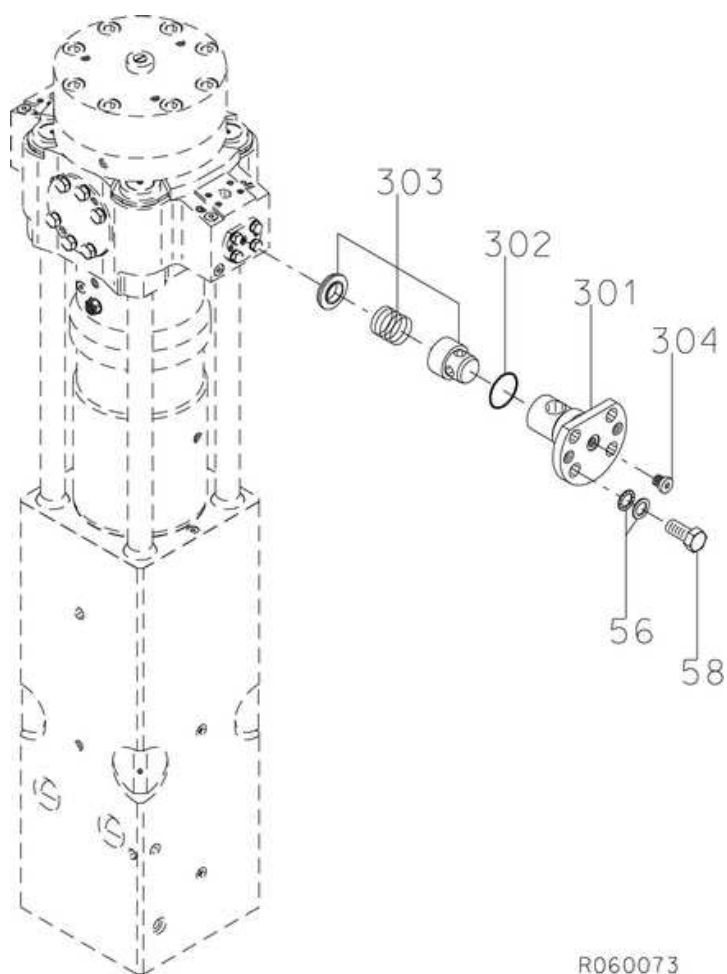
R060181

Item	Description	Part no.	Specification	Note	Qty
16	Main valve bushing	104186			1
17	Main spool	300921			1
18	Spool	400649			1
19	Spool	40523			1
20	Cover	30260			1
21	Cover	30295			1
45	O-ring	90032	D120	*	2
46	Seal	902644		*	6
57	Lock washer	91010	M20 NORD-LOCK		12
59	Hex. screw	900036	M20x70-10.9 DIN 931		12

*) Are included in seal set

Check valve

[10AAA0005-UP] [10ADA0005-UP] [10AEA0005-UP] [10TEB0005-UP] [10TRD0005-UP]



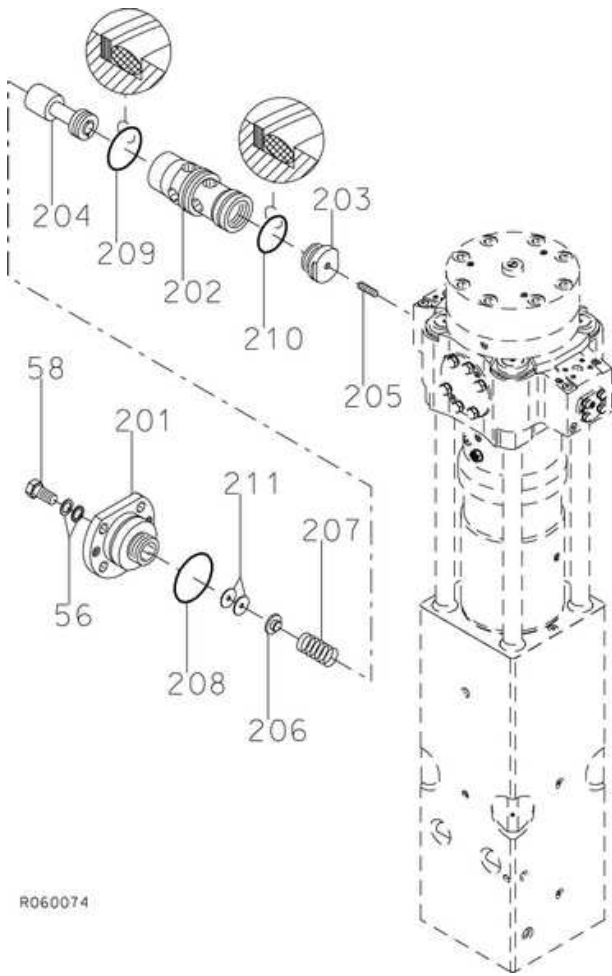
R060073

Item	Description	Part no.	Specification	Note	Qty
3	Check valve (incl. parts 301-304)	300725			1
301	Cover	300696			1
302	O-ring	90007	D44	*	1
303	Check valve	915077			1
304	Flange plug	90403	BSP 1/4		1
56	Lock washer	90597	M16 NORD-LOCK		4
58	Hex. screw	90517	M16x35-8.8 DIN 933		4

*) Are included in seal set

Pressure control valve

[10AAA0005-UP] [10ADA0005-UP] [10AEA0005-UP] [10TEB0005-UP] [10TRD0005-UP]



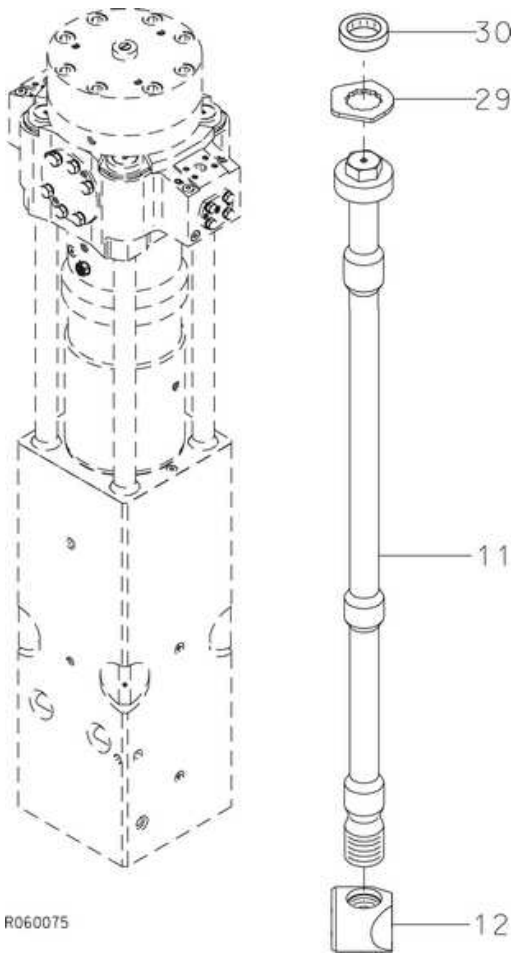
R060074

Item	Description	Part no.	Specification	Note	Qty
<u>2</u>	Pressure control valve (incl. parts 201-211)	300723			1
<u>201</u>	Cover	300871			1
<u>202</u>	Valve housing	300814			1
<u>203</u>	Guide	400581			1
<u>204</u>	Spool	300866			1
<u>205</u>	Spool	400582			1
<u>206</u>	Spring guide	42174			1
<u>207</u>	Spring	90118			1
<u>208</u>	O-ring	90030	D75	*	1
<u>209</u>	Seal	40533	D65	*	1
<u>210</u>	Seal	41374	D55	*	1
<u>211</u>	Shim plate	42363	S=1		X
<u>211</u>	Shim plate	42362	S=0.5		X
<u>211</u>	Shim plate	42361	S=1.5		X
<u>56</u>	Lock washer	90597	M16 NORD-LOCK		4
<u>58</u>	Hex. screw	90517	M16x35-8.8 DIN 933		4

*) Are included in seal set

Tie rods CLASSIC

[10AAA0194-UP] [10ADA0194-UP] [10AEA0194-UP] [10TEB0061-UP] [10TRD0061-UP]

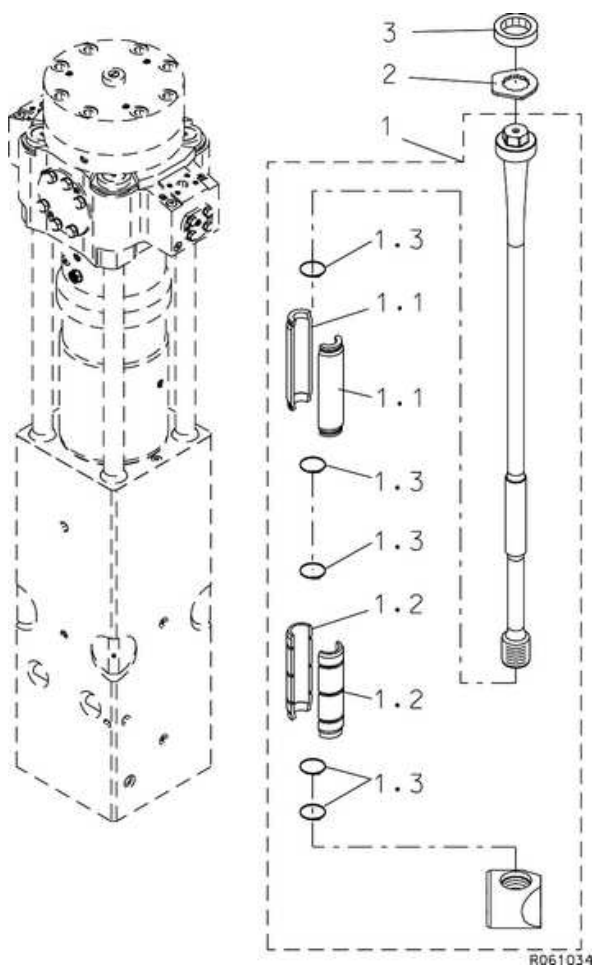


R060075

Item	Description	Part no.	Specification	Note	Qty
11	Tie rod	103777			4
12	Tie rod nut	112491			4
29	Lock plate	400478			4
30	Rubber ring	40586			4

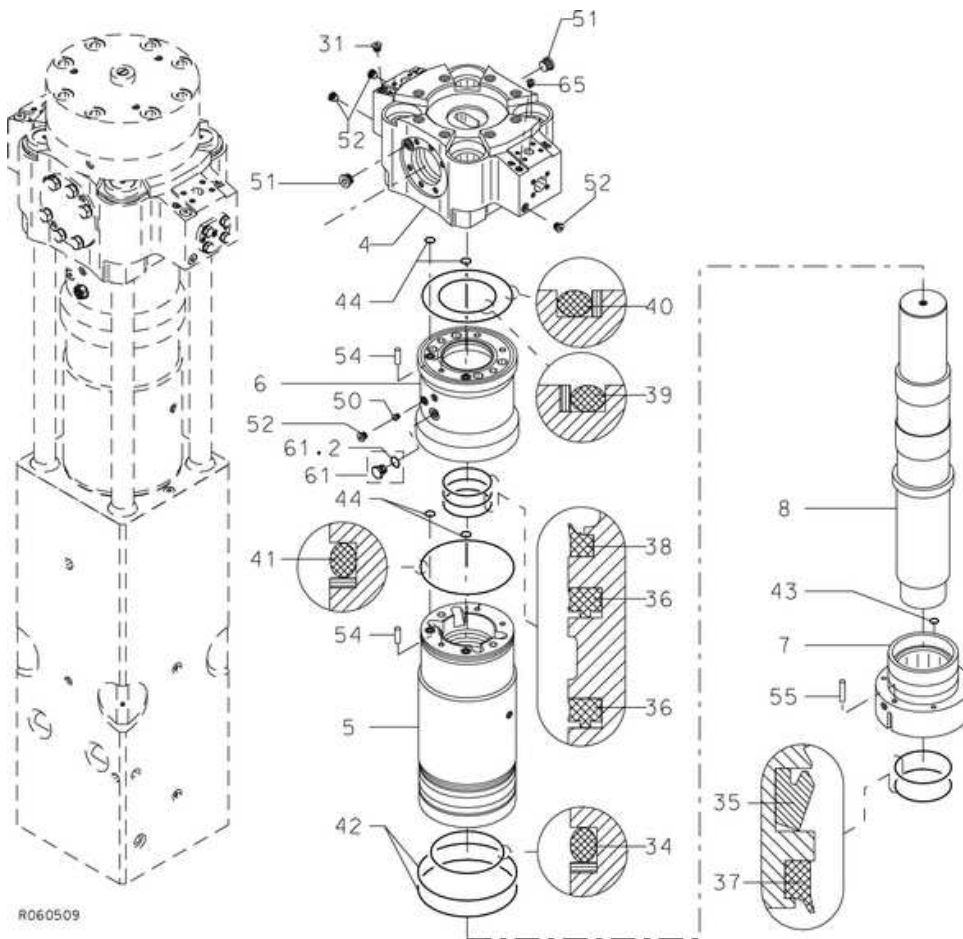
Tie rods VIDAT

[10AAA0194-UP] [10ADA0194-UP] [10AEA0194-UP] [10TEB0061-UP] [10TRD0061-UP]



Item	Description	Part no.	Specification	Note	Qty
<u>1</u>	Tie rod (incl. 1.1-1.3)	165699			4
<u>1.1</u>	Bushing	159596			2
<u>1.2</u>	Bushing	159607			2
<u>1.3</u>	Cable tie	952009			5
<u>2</u>	Lock plate	400478			4
<u>3</u>	Rubber ring	40586			4
<u>Kit</u>	Tie rod set	K40010	incl. 4 pcs 165699		1

Body parts STD, CITY, CITY-JET
 [10AAA0234-UP] [10ADA0234-UP] [10AEA0234-UP]



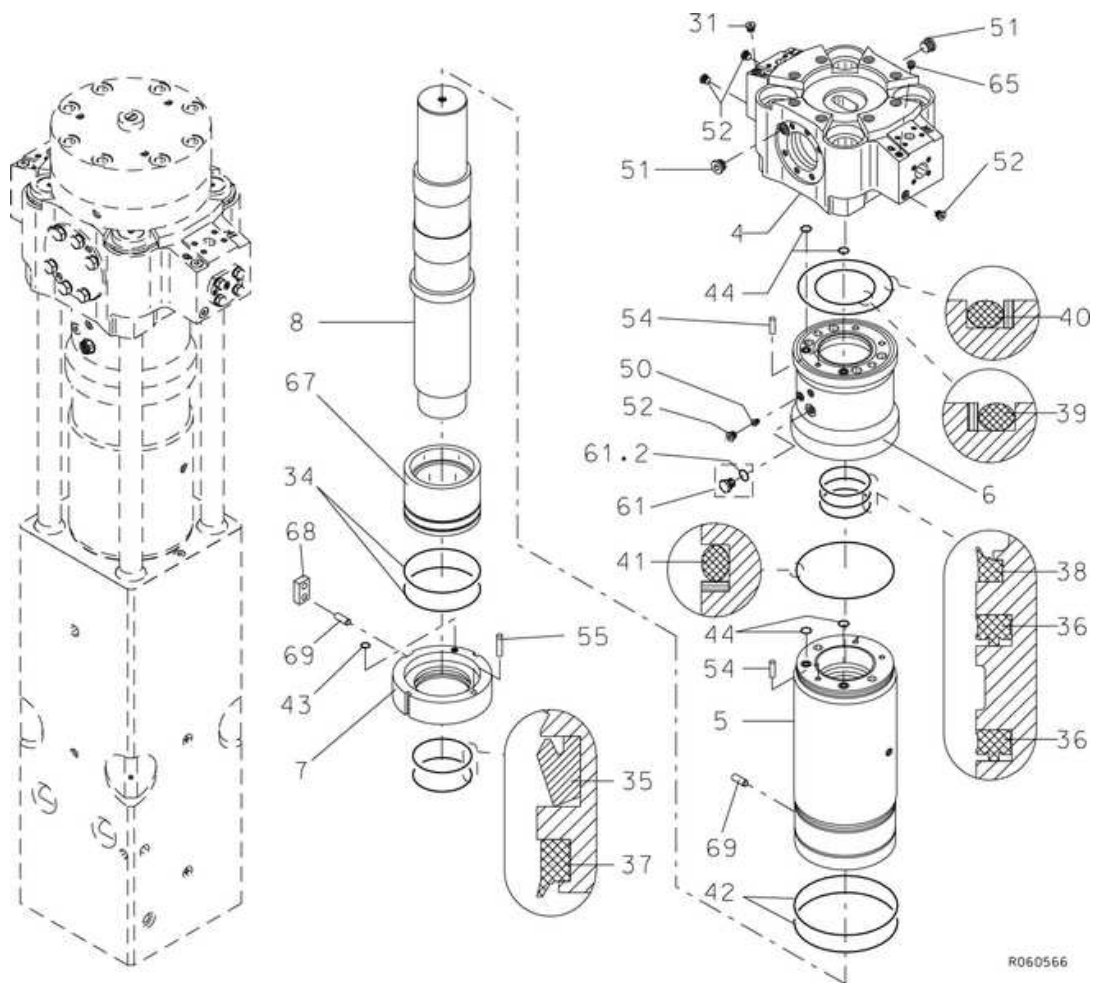
R060509

Item	Description	Part no.	Specification	Note	Qty
4	Valve body	100394			1
5	Cylinder	100418			1
6	Seal carrier	100415			1
7	Lower seal carrier	100416			1
8	Piston	100417			1
31	Breather	400562			1
34	Seal	40588	D210	*	1
35	Seal	903066	D160	*	1
36	Seal	911023	D142	*	2
37	Wiper	90065	D160	*	1
38	Wiper	90064	D142	*	1
39	Seal	400474	D160	*	1
40	Seal	400476	D260	*	1
41	Seal	400481	D280	*	1
42	O-ring	910015	D269	*	2
43	O-ring	90012	D19	*	1
44	O-ring	910018	D21	*	4
50	Flange plug	90403	BSP 1/4		1
51	Flange plug	90410	BSP 1		2
52	Flange plug	90424	BSP 1/2		4
54	Parallel pin	90317	16m6x50 DIN 6325		2
55	Parallel pin	904017	16m6x70 DIN 6325		1
61	Breather (incl. part 61.2)	101700			1
61.2	O-ring	901173	D27	*	1
65	Flange plug	90444	BSP 3/8		1

*) Are included in seal set

Body parts TUNNEL, HARD

[10TEB0100-UP] [10TRD0100-UP]



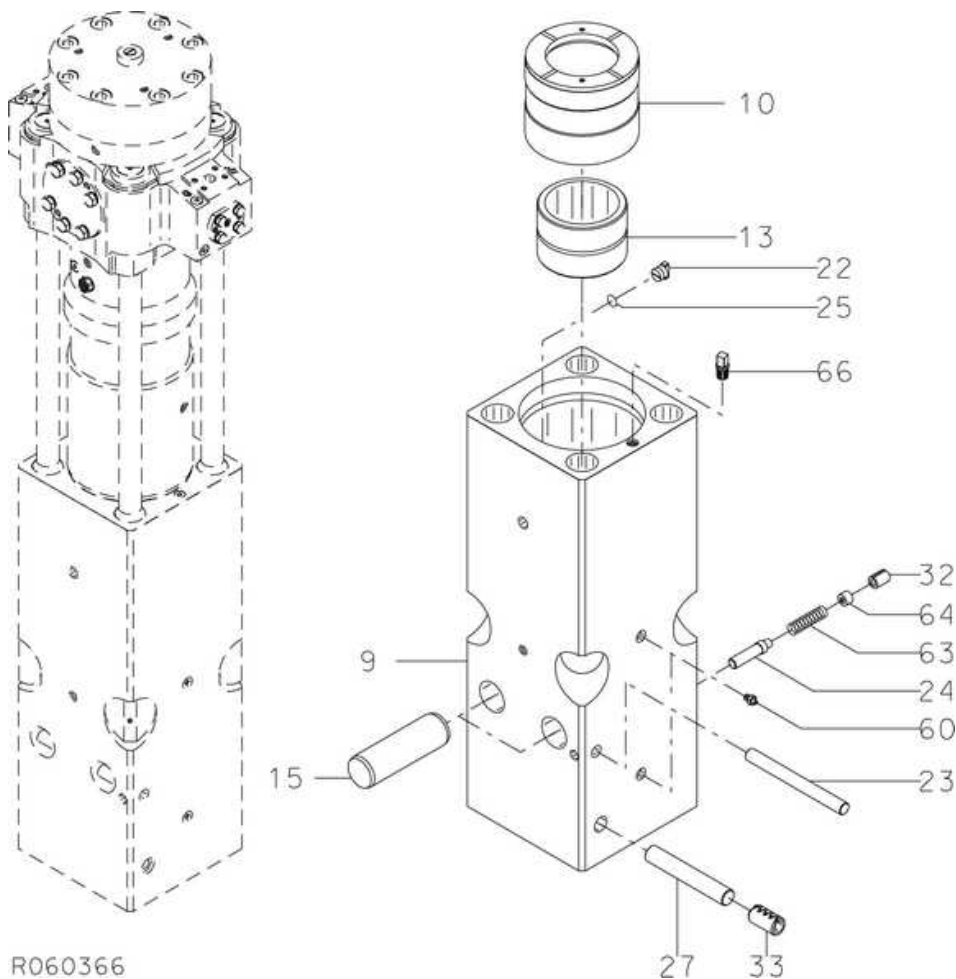
R060566

Item	Description	Part no.	Specification	Note	Qty
4	Valve body	100394			1
5	Cylinder	102999			1
6	Seal carrier	100415			1
7	Seal carrier	103000			1
8	Piston	100417			1
31	Breather	400562			1
34	O-ring	90036	D209	*	2
35	Seal	903066	D160	*	1
36	Seal	911023	D142	*	2
37	Wiper	90065	D160	*	1
38	Wiper	90064	D142	*	1
39	Seal	400474	D160	*	1
40	Seal	400476	D260	*	1
41	Seal	400481	D280	*	1
42	O-ring	910015	D269	*	2
43	O-ring	90011	D14	*	1
44	O-ring	910018	D21	*	4
50	Flange plug	90403	BSP 1/4		1
51	Flange plug	90410	BSP 1		2
52	Flange plug	90424	BSP 1/2		4
54	Parallel pin	90317	16m6x50 DIN 6325		2
55	Parallel pin	904017	16m6x70 DIN 6325		1
61	Breather (incl. part 61.2)	915050			1
61.2	O-ring	901173		*	1
65	Flange plug	90444	BSP 3/8		1
67	Bearing bushing	103003			1
68	Stopper	156223			1
69	Pin	156257			2

*) Are included in seal set

Front head STD, CITY, CITY-JET

[10AAA0177-UP] [10ADA0177-UP] [10AEA0177-UP]



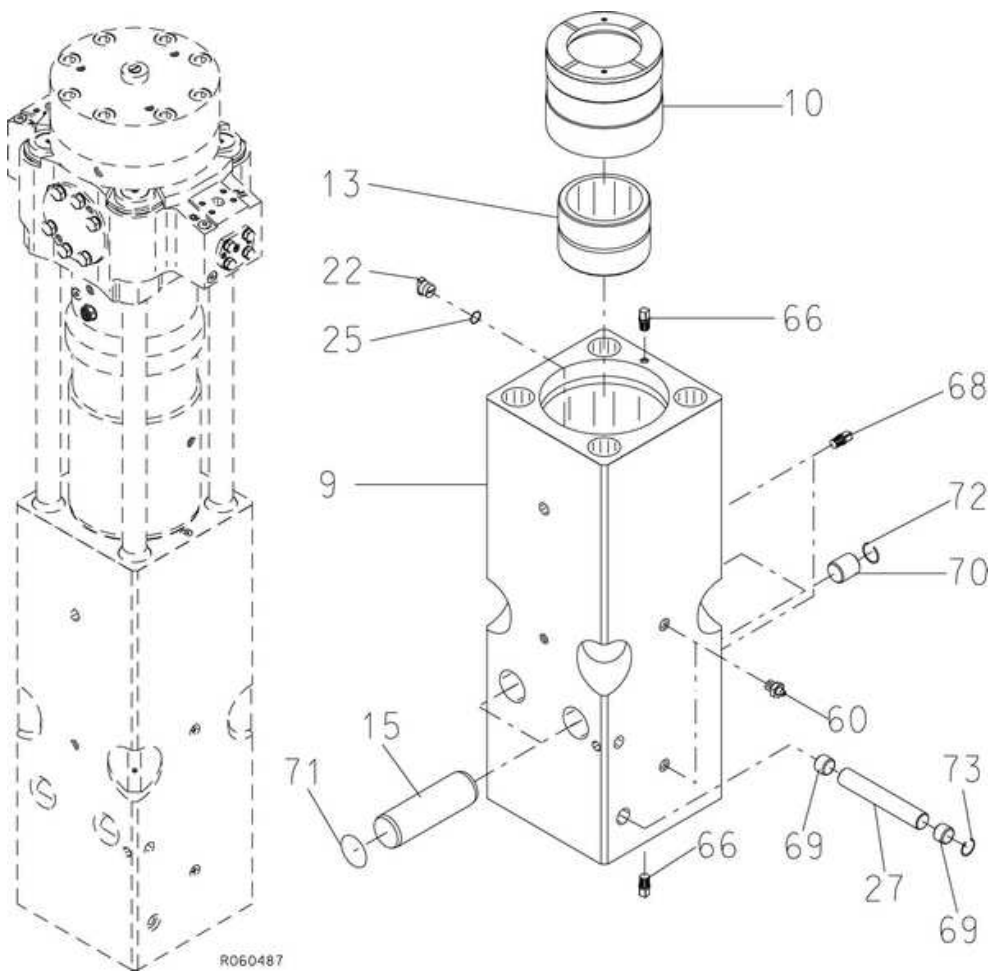
R060366

Item	Description	Part no.	Specification	Note	Qty
9	Front head (incl. parts 60, 66 and 68)	100395			1
10	Thrust ring	200359			1
13	Upper tool bushing	300619			1
15	Tool retaining pin	400470	D80		2
22	Wedge	40110			1
23	Retaining pin	400468	D30		1
24	Retaining pin	400415	D28		1
25	O-ring	90000	D24	*	1
27	Retaining pin	400469	D40		1
32	Split pin	904006	30x40 DIN 1481		1
33	Split pin	901134	D40x70		1
60	Grease nipple	90200	BSP 1/4		2
63	Spring	42428			1
64	Spring guide	400419			1
66	Plug	111404			1

*) Are included in seal set

Front head TUNNEL, HARD

[10TEB0080-UP] [10TRD0080-UP]

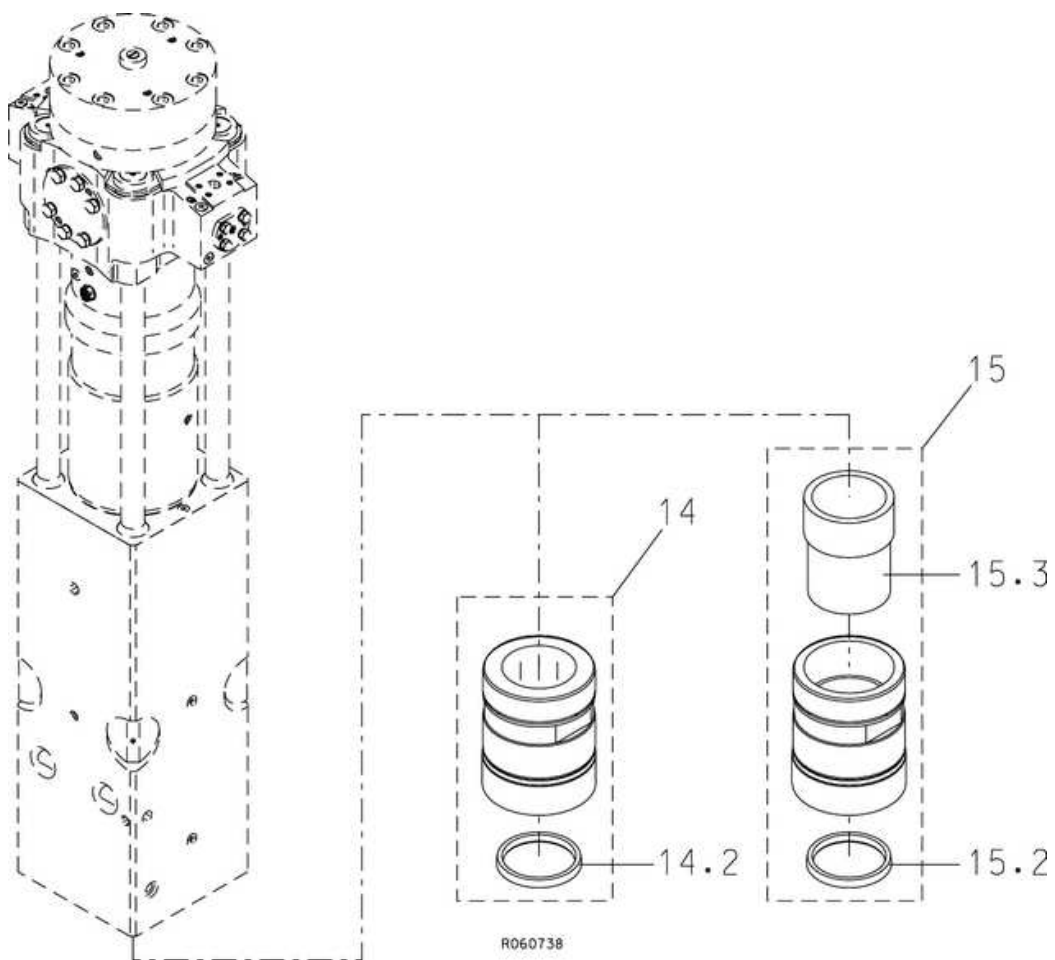


Item	Description	Part no.	Specification	Note	Qty
9	Front head (incl. parts 66 and 68)	104178			1
10	Thrust ring	200359			1
13	Upper tool bushing	300619			1
15	Tool retaining pin	400470	D80		2
22	Wedge	40110			1
25	O-ring	90000	D24	*	1
27	Retaining pin	400469	D40		1
60	Grease nipple	90200	BSP 1/4		2
66	Plug	111404			2
68	Plug	111399			2
69	Plug	104235			2
70	Plug	104236			2
71	O-ring	902808	D79		2
72	Spring ring	902807	B50 DIN 7993		2
73	Spring ring	902262	B40 DIN 7993		1

*) Are included in seal set

Lower tool bushing

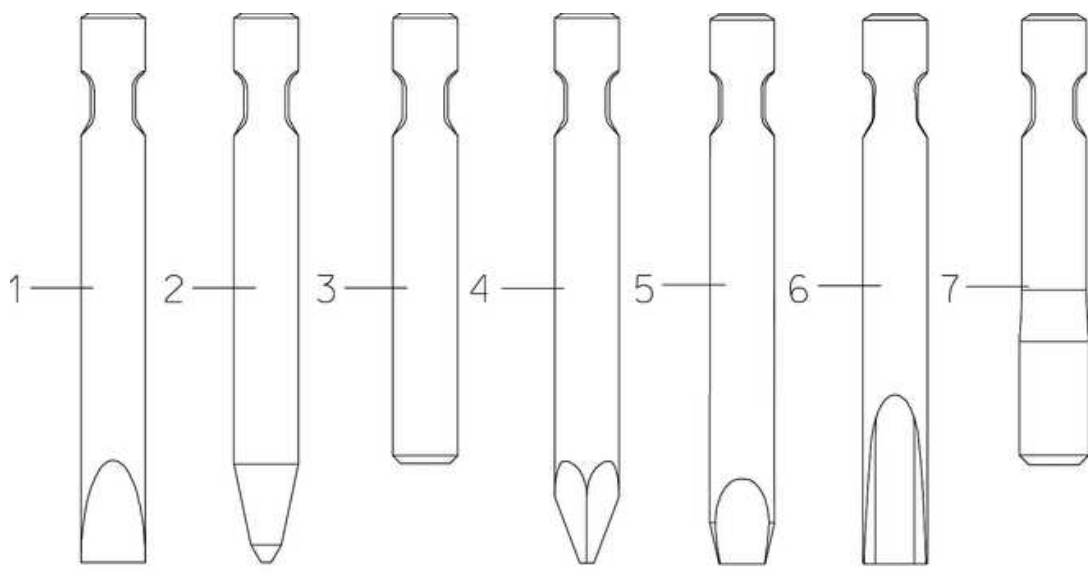
[10AAA0005-UP] [10ADA0005-UP] [10AEA0005-UP] [10TEB0005-UP] [10TRD0005-UP]



Item	Description	Part no.	Specification	Note	Qty
14	Lower tool bushing, standard (incl. part 14.2)	102159			1
14.2	Seal	102149			1
15	Lower tool bushing, extreme duty (incl. parts 15.2-15.3)	154516			1
<i>For more information, see "Extreme duty lower tool bushings for the G-series, Publ. no. A000119E" in Bulletins.</i>					
15.2	Seal	102149			1
15.3	Insert	154515			1

Tool

[10AAA0194-UP] [10ADA0194-UP] [10AEA0194-UP] [10TEB0061-UP] [10TRD0061-UP]

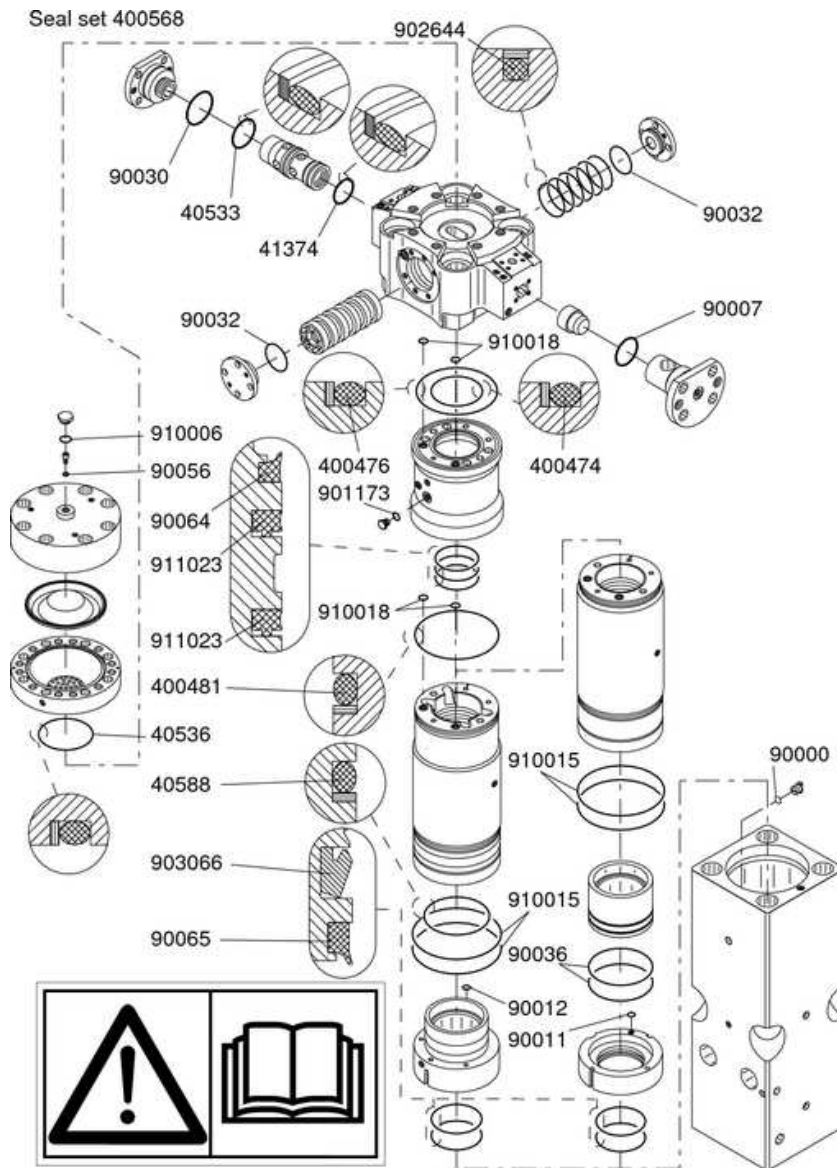


R060731

Item	Description	Part no.	Specification	Note	Qty
1	Chisel	101	L = 1450 mm, W = 230 kg, D = 170 mm		1
2	Moil point	103	L = 1450 mm, W = 225 kg, D = 170 mm		1
3	Blunt	104	L = 1300 mm, W = 225 kg, D = 170 mm		1
4	Pyramid	103K3	L = 1450 mm, W = 215 kg, D = 170 mm		1
5	Limestone Chisel	101F3	L = 1450 mm, W = 240 kg, D = 170 mm		1
6	Hard Rock Chisel	101A2	L = 1450 mm, W = 245 kg, D = 170 mm		1
7	Super Blunt	104T2	L = 1350 mm, W = 248 kg, D = 203 mm		1

Seal set

[10AAA0092-UP] [10ADA0092-UP] [10AEA0092-UP] [10TEB0092-UP] [10TRD0092-UP]



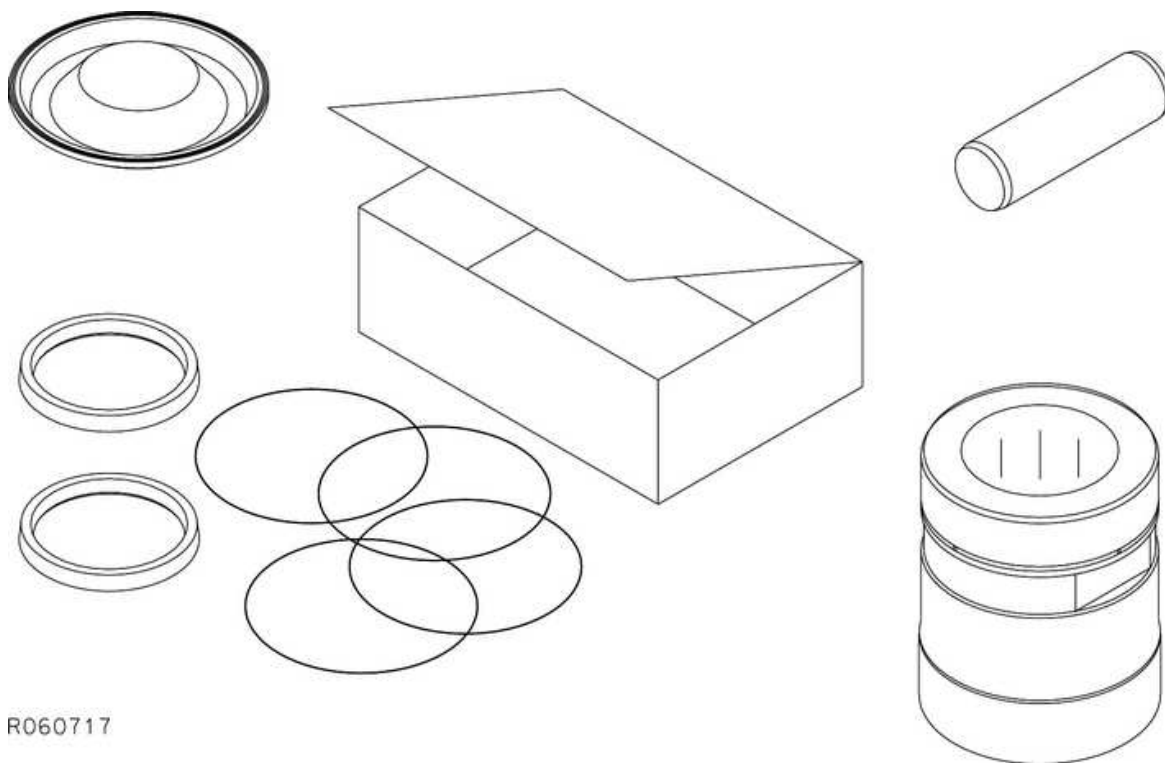
This summary only indicates the position of the seals. It must NOT be used as assembly instruction. Read the manual. R061299

Item	Name	Part no.	Specification	Note	Qty
Kit	Seal set (incl. parts 1-28)	400568			1
1	O-ring	90000	D24		1
2	Seal	40588	D210		1
3	O-ring	90036	D209		2
4	Seal	903066	D160		1
5	Seal	911023	D142		2
6	Wiper	90065	D160		1
7	Wiper	90064	D142		1
8	Seal	400474	D160		1
9	Seal	400476	D260		1
10	Seal	400481	D280		1
11	O-ring	910015	D269		2
12	O-ring	90012	D19		1
13	O-ring	90011	D14		1
14	O-ring	910018	D21		4
15	O-ring	90032	D120		2
17	Seal	902644			6
18	O-ring	90017	D34		2
20	O-ring	910014	D64		4
21	O-ring	901173			1
22	Seal	40536	D144		1

23	Usit-ring	90056	8-13.9-1	1
24	O-ring	90030	D75	1
25	Seal	040533	D65	1
26	Seal	41374	D55	1
27	O-ring	90007	D44	1
28	O-ring	910006	D23	1
29	O-ring	910013	D117 Sold separately	6

Service kit

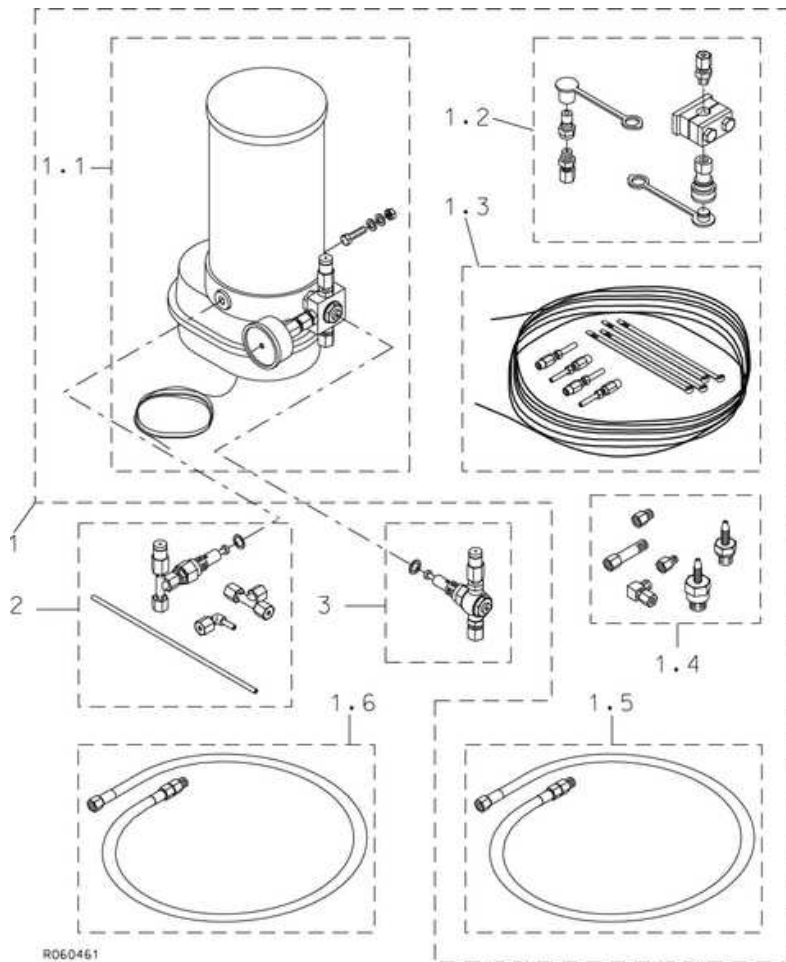
[10AAA0194-UP] [10ADA0194-UP] [10AEA0194-UP]



R060717

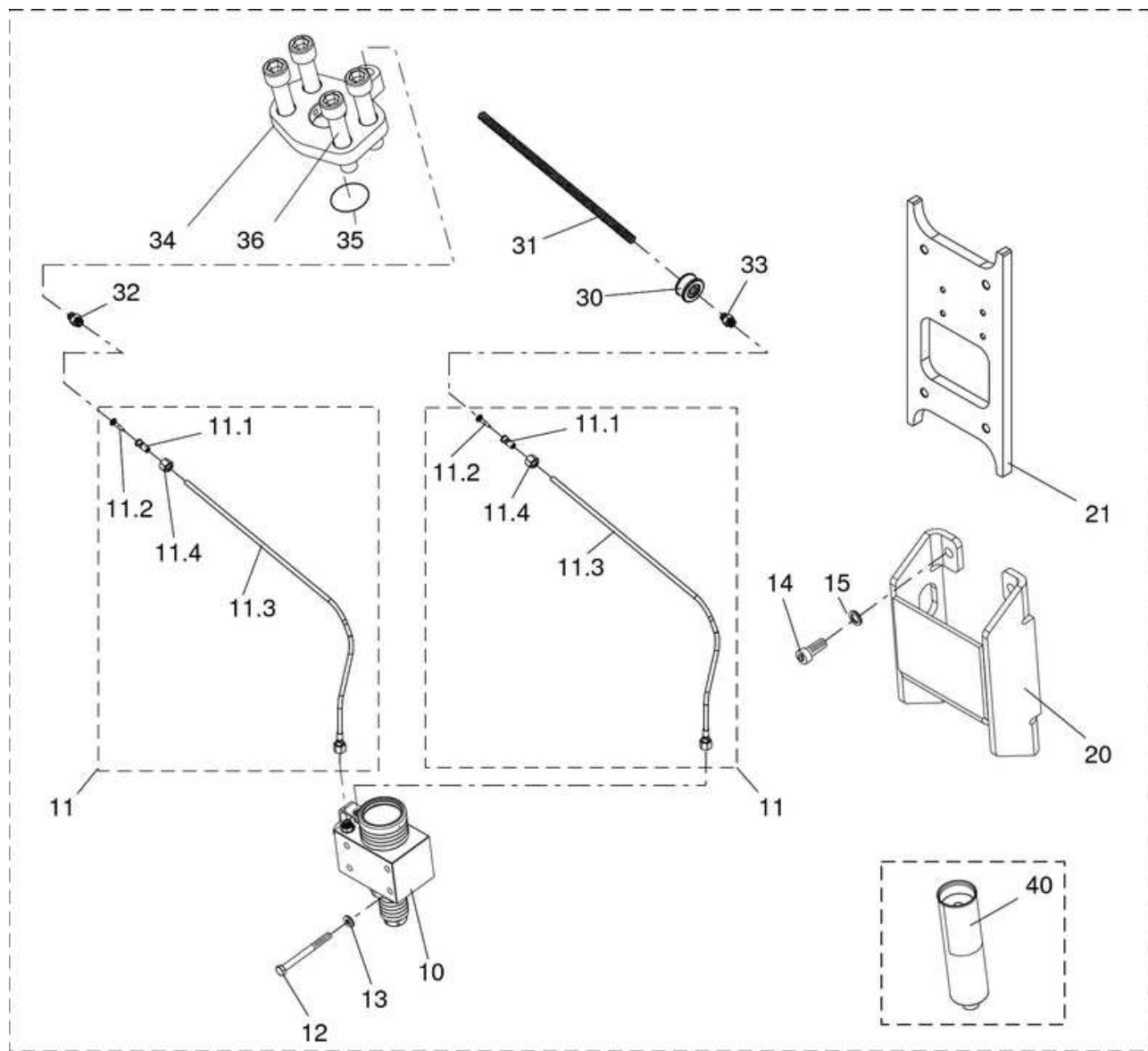
Item	Description	Part no.	Specification	Note	Qty
Kit	Service kit (incl. parts 1 - 5)	K10010	Excluding TUNNEL, HARD		1
1	Membrane	172307			1
2	Membrane	104022			1
3	Tool retaining pin	400470	D80		2
4	Lower tool bushing, standard	102159			1
5	Seal set	400568			1

Ramlube



Item	Description	Part no.	Specification	Note	Qty
<u>1</u>	Ramlube kit (incl. parts 1.1-1.5)	850500			1
<u>1.1</u>	Pump				1
<u>1.2</u>	Quick coupling set	850505			1
<u>1.3</u>	Hose set	850504			1
<u>1.4</u>	Adapter set				1
<u>1.5</u>	Hose set	852691	BSP 3/8		1
<u>1.6</u>	Hose set	852627	BSP 1/4 (optional)		1
<u>2</u>	Pump element set	850507	Additional pump element		1
<u>3</u>	Pump element, complete	850506	Spare part for original pump element		1
<u>4</u>	Ramlube kit (incl. parts 1 and 3)	954471	For 3288, 4099 and 5011		1
<u>5</u>	Ramlube kit (incl. parts 1, 2 and 3)	954472	For 7013		1

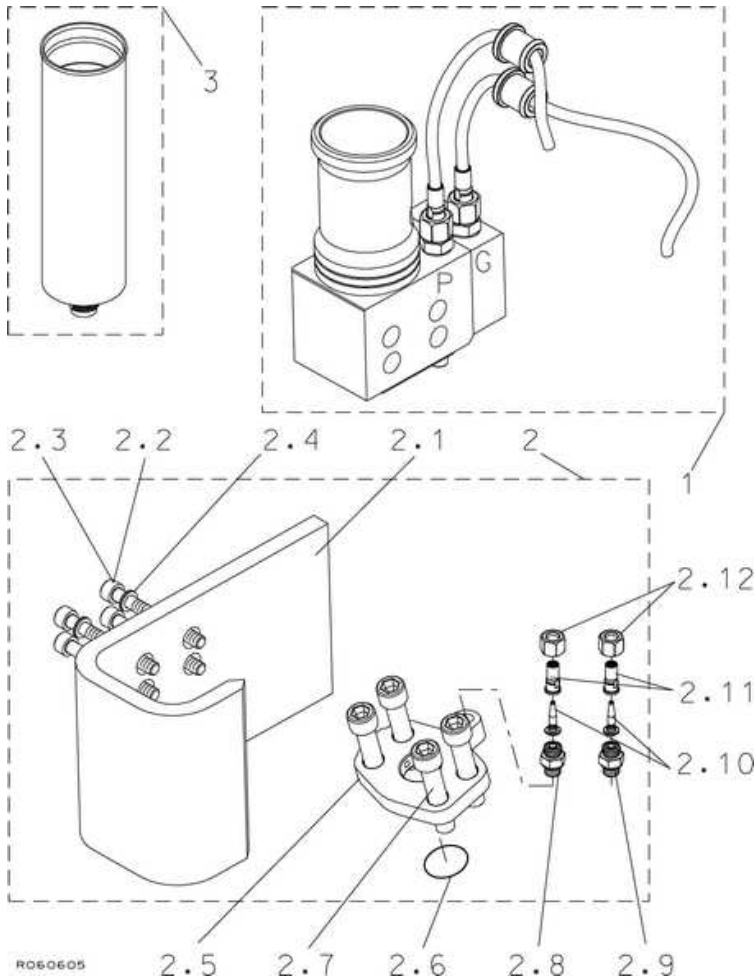
Ramlube II kit RG540 series (4510, 4511, E 68, G 80 N, G 90, G 100, G 110)
[RG5410313-UP]



R061099

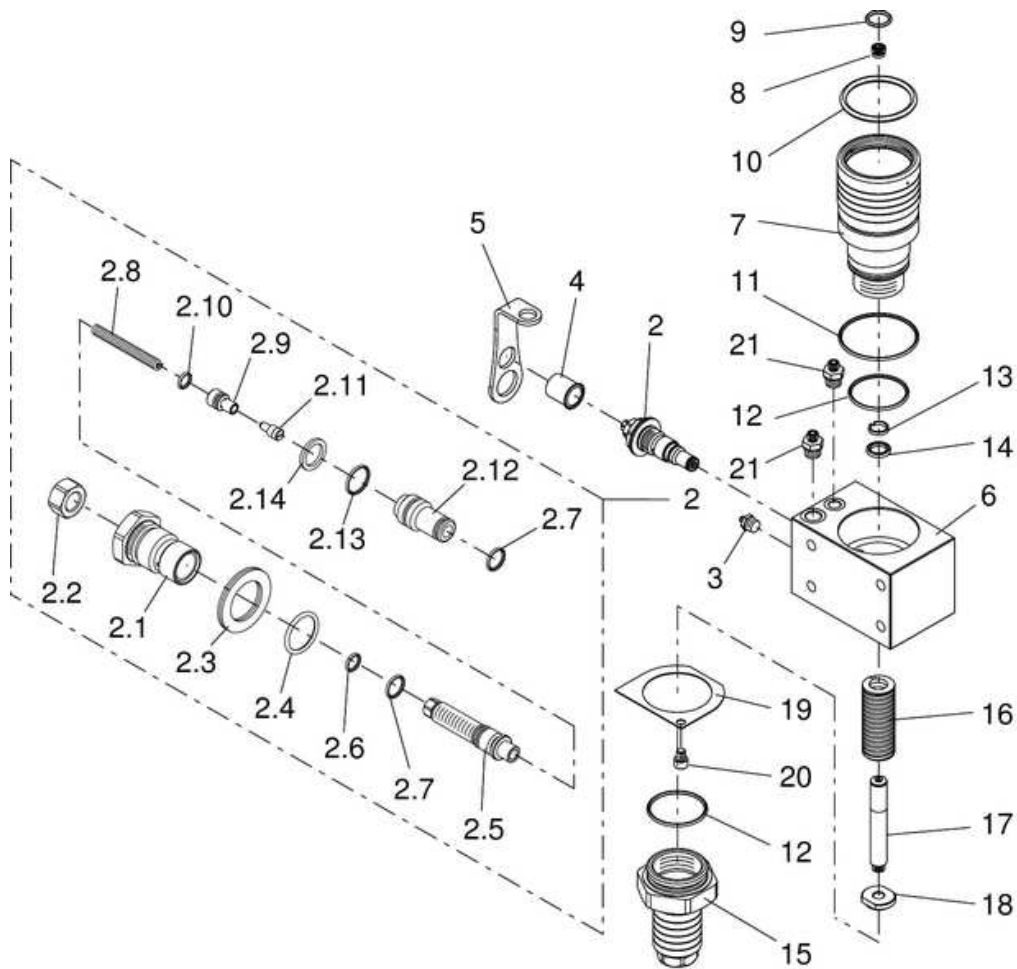
Item	Description	Part no.	Specification	Note	Qty
Kit1	Ramlube II kit (incl. parts 10-36)	K60100			1
10	Greasing device RG541	953344			1
11	Hose assembly (incl. parts 11.1-11.4)	169221			2
11.1	Sleeve	153035			2
11.2	Insert	153036			2
11.3	Hose	953946			1
11.4	Nut	951296			2
12	Hex. screw	953794	M10x110-8.8 ISO 4014		4
13	Lock washer	953503	M10 NL10sp NORD-LOCK		4
14	Hex. socket screw	902895	M16x35-8.8 ISO 4762		4
15	Lock washer	90597	M16 NORD-LOCK		4
20	Shield	168029			1
21	Mounting plate	169220			1
30	Rubber bushing	158147			1
31	Shield	952093			1
32	Connector	951294	BSPP 1/4		1
33	Connector	951295	BSPP 3/8		1
34	Flange	153728	SAE 1 / SAE 1 1/4		1
35	O-ring	90009	BS 1806 37.69x3.53-NBR 90		1
36	Hex. socket screw	903075	M14x70-8.8 ISO 4762		4

Ramlube II kit RG530 series (G 90, G 100, G 110)

[RG5310307-UP]

Item	Description	Part no.	Specification	Note	Qty
Kit	Ramlube II kit (incl. parts 1-3)	154935			1
<u>1</u>	Greasing device RG531	154929			1
<u>2</u>	Installation kit (incl. parts 2.1-2.12)	154932			1
<u>2.1</u>	Mounting plate	154387			1
<u>2.2</u>	Hex. socket screw	902486	M10x100-8.8 ISO 4762		4
<u>2.3</u>	Hex. socket screw	91079	M10x40-8.8 ISO 4762		4
<u>2.4</u>	Lock washer	91037	M10 NORD-LOCK		4
<u>2.5</u>	Flange	153728	SAE 1 1/4		1
<u>2.6</u>	O-ring	90009	BS 1806 37.69x3.53-NRB 90		1
<u>2.7</u>	Hex. socket screw	903075	M14x70-8.8 ISO 4762		4
<u>2.8</u>	Connector	951294	BSPP 1/4		1
<u>2.9</u>	Connector	951295	BSPP 3/8		1
<u>2.10</u>	Insert	153036			2
<u>2.11</u>	Sleeve	153035			2
<u>2.12</u>	Nut	951296			2
<u>3</u>	Grease cartridge	951370	Special tool grease, Ramlube II cartridge. Greasing device cartridges are also sold in boxes of 24.		1

Ramlube II greasing device RG541**[RG5410313-UP]**



R061073

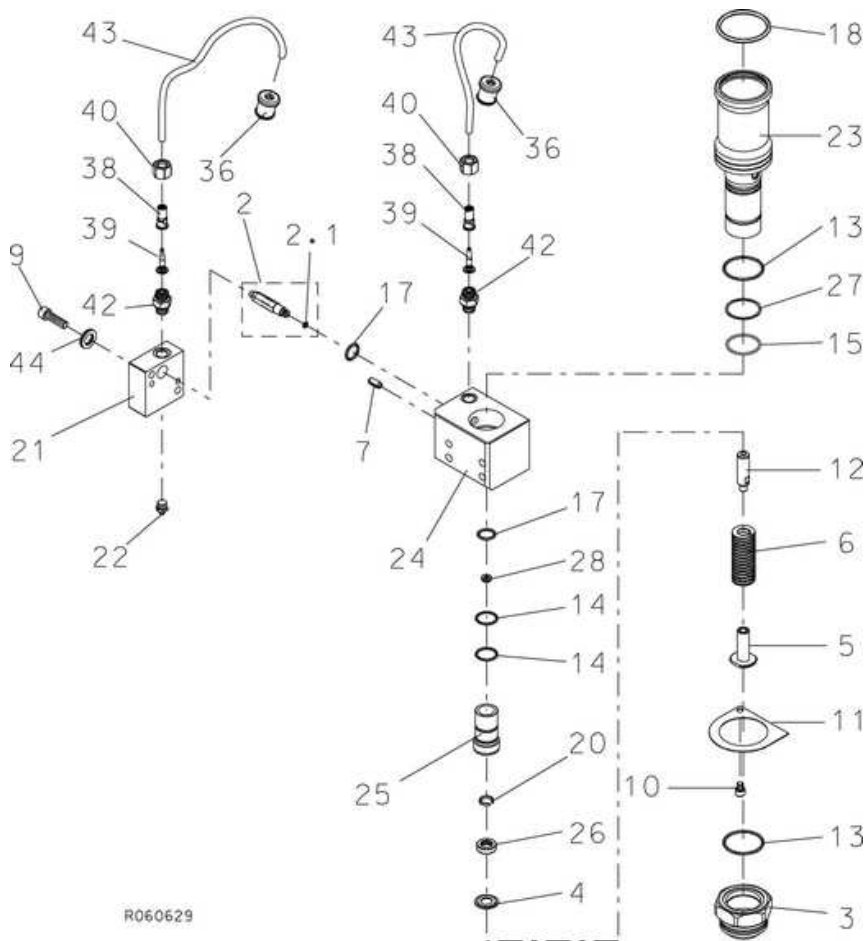
Item	Description	Part no.	Specification	Note	Qty
<u>1</u>	Greasing device RG541 (incl. parts 2-21)	953344			1
<u>2</u>	Doser (incl. parts 2.1-2.14)	173573			1
<i>For more information, see "Greasing device doser, Publ. no. A000192E" in Bulletins.</i>					
<u>2.1</u>	Plug	173574			1
<u>2.2</u>	Nut	953330	M12x1 DIN 934		1
<u>2.3</u>	Lock washer	91038	M24 NORD-LOCK	*	1
<u>2.4</u>	O-ring	953325	D21	*	1
<u>2.5</u>	Adjusting screw	953317			1
<u>2.6</u>	O-ring	953326	D8	*	1
<u>2.7</u>	O-ring	953324	D11	*	2
<u>2.8</u>	Spring	953331		*	1
<u>2.9</u>	Piston	173576			1
<u>2.10</u>	O-ring	953322	D7	*	1
<u>2.11</u>	Piston	953329		*	1
<u>2.12</u>	Body	173575			1
<u>2.13</u>	O-ring	953323	D15	*	1
<u>2.14</u>	Shim plate	953321		*	1
<u>3</u>	Grease nipple	90200	BSP 1/4	*	1
<u>4</u>	Plug	953303		*	1
<u>5</u>	Locking plate	953302			1
<u>6</u>	Body	953310			1
<u>7</u>	Cartridge holder	953309			1
<u>8</u>	Check valve	951767			1
<u>9</u>	O-ring	951416	D19	*	1
<u>10</u>	O-ring	951453	D62	*	1
<u>11</u>	O-ring	953300	D71	*	1
<u>12</u>	O-ring	953301	D52	*	2
<u>13</u>	Guide ring	950272		*	1
<u>14</u>	Seal	953299		*	1

15	Spring housing	953308		1
16	Spring	950257		1
17	Piston	953307		1
18	Nut	953306		1
19	Lock plate	951410	*	1
20	Hex. socket screw	951421	M8x10-8.8 ISO 4762 *	1
21	Connector	951294	BSPP 1/4	3
kit	Seal set for greasing device	953385		1

*) Are included in seal set for greasing device

Ramlube II greasing device RG530 series

[RG5310365-UP]



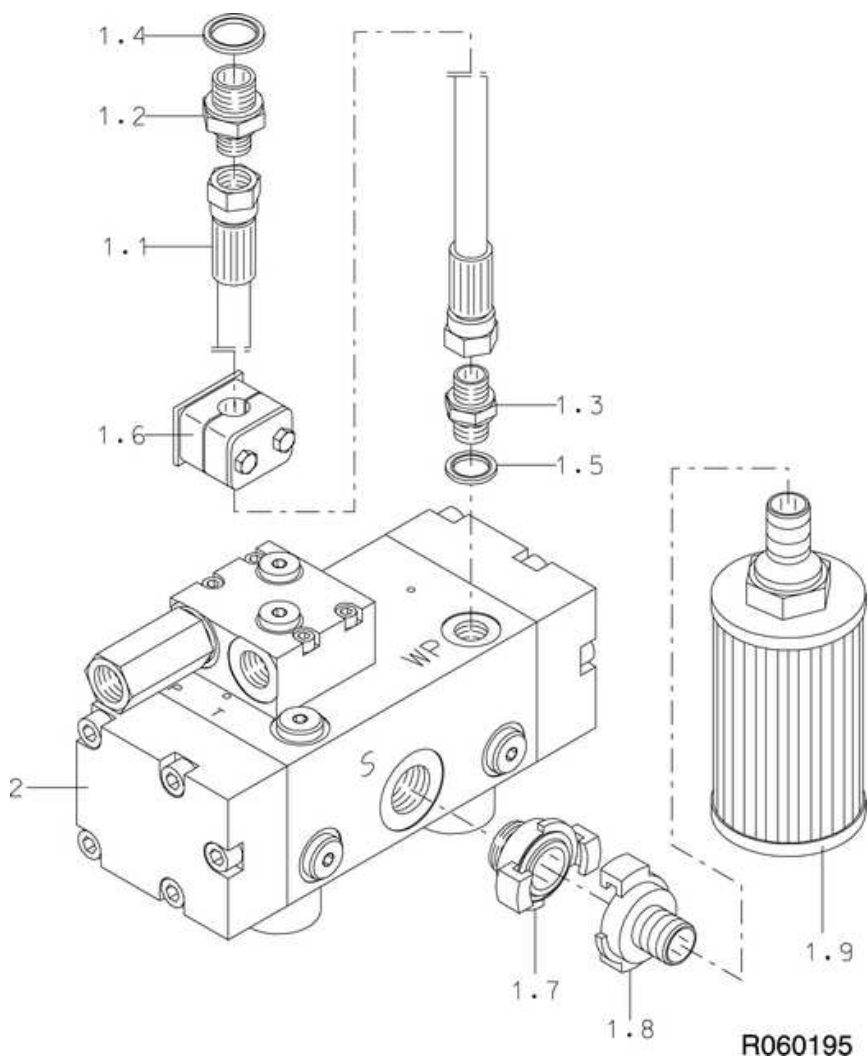
R060629

Item	Description	Part no.	Specification	Note	Qty
Kit	Greasing device RG531 (incl. parts 1 and 36-43)	154929			1
1	Greasing device RG531 (incl. parts 2-28)	951415			1
2	Doser (incl. part 2.1)	158238	RGC-2 (optional)		1
2	Doser (incl. part 2.1)	158239	RGC-3 (optional)		1
2	Doser (incl. part 2.1)	158240	RGC-4 (optional)		1
2	Doser (incl. part 2.1)	158241	RGC-5 (standard)		1
2	Doser (incl. part 2.1)	158242	RGC-6 (optional)		1
2.1	O-ring	950271	D5	*	1
3	Nut	951409			1
4	Spring support	951412			1
5	Spring guide	951408			1
6	Spring	950257			1
7	Split pin	950275	8x20 ISO 8752		2
9	Hex. socket screw	90592	M10x35-8.8 ISO 4762		2

10	Hex. socket screw	951421	M8x10-8.8 ISO 4762	*	1
11	Lock plate	951410		*	1
12	Piston	150854			1
13	O-ring		D50	*	2
14	O-ring		D25	*	2
15	O-ring		D43	*	1
17	O-ring		D19	*	2
18	O-ring		D62	*	1
20	Guide ring		D16	*	1
21	Gable plate	152025			1
22	Grease nipple	90200	BSP 1/4	*	1
23	Cartridge holder	951794			1
24	Body	951414			1
25	Cylinder	951795			1
26	Seal		D16	*	1
27	Supporting ring		D43	*	1
28	Check valve	951767			1
36	Rubber bushing	152172			2
38	Sleeve	153035			2
39	Insert	153036			2
40	Nut	951296			2
42	Connector	951295	BSPP 3/8		2
43	Hose	951434	L=1000		2
44	Lock washer	91037	M10 NORD-LOCK		8
kit	Seal set for greasing device	152453			1

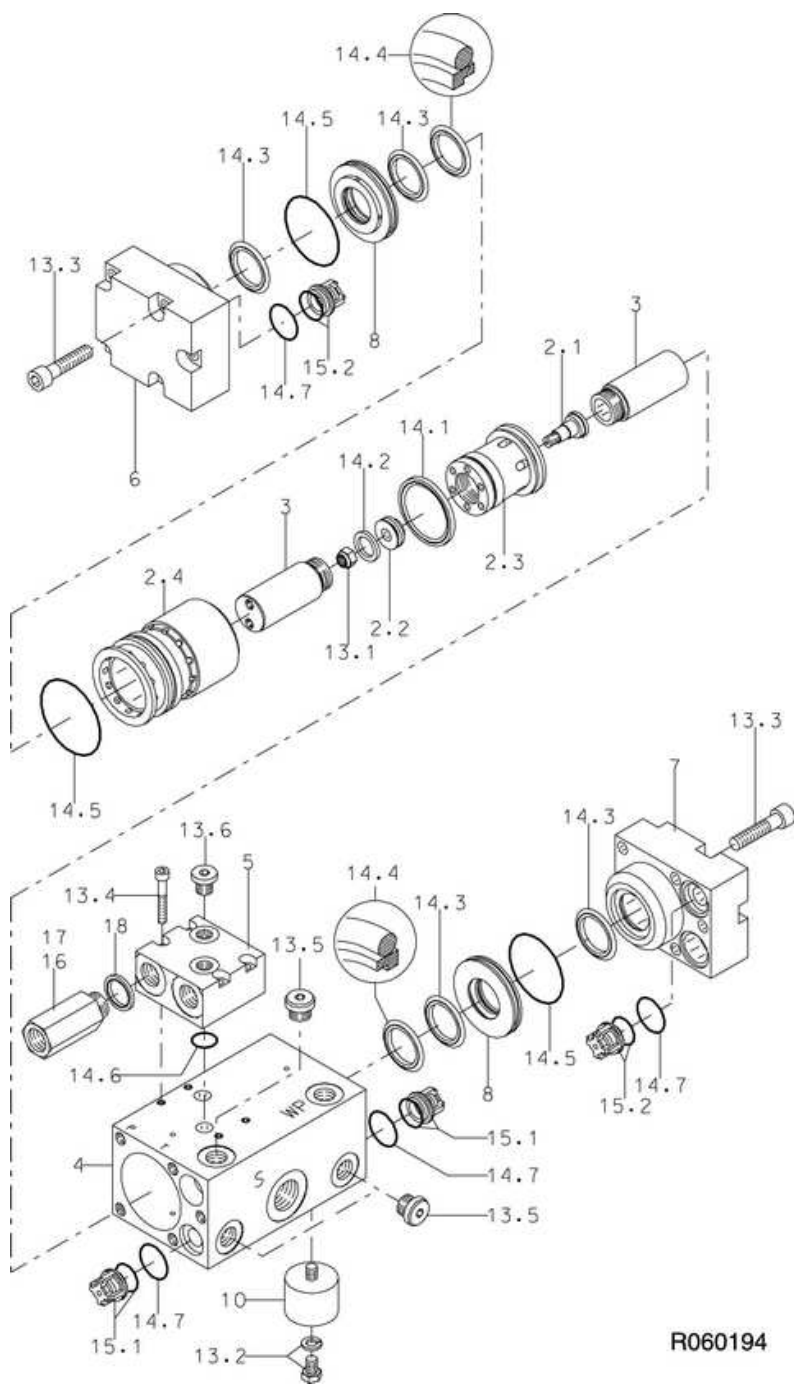
*) Are included in seal set

Rammer Jet Kit 20



Item	Description	Part no.	Specification	Note	Qty
Kit	Jet Kit 20 (incl. parts 1-2)	105761			1
1	Hose kit (incl. parts 1.1-1.9)	104510			1
1.1	Hose assembly		20511-04-06/TC-04/20511-04-06 l=20000		1
1.2	Reducer	902749	400-06-08		1
1.3	Adapter	902364	400-06		1
1.4	Seal	911041	Usit R1/2		1
1.5	Seal	94092	Usit R3/8		1
1.6	Hose clamp, complete	902750	A215D		25
1.7	Fitting	104505			1
1.8	Hose coupling	104504			1
1.9	Strainer	104507			1
2	Rammer Jet Pump	932024			1

Rammer Jet Pump

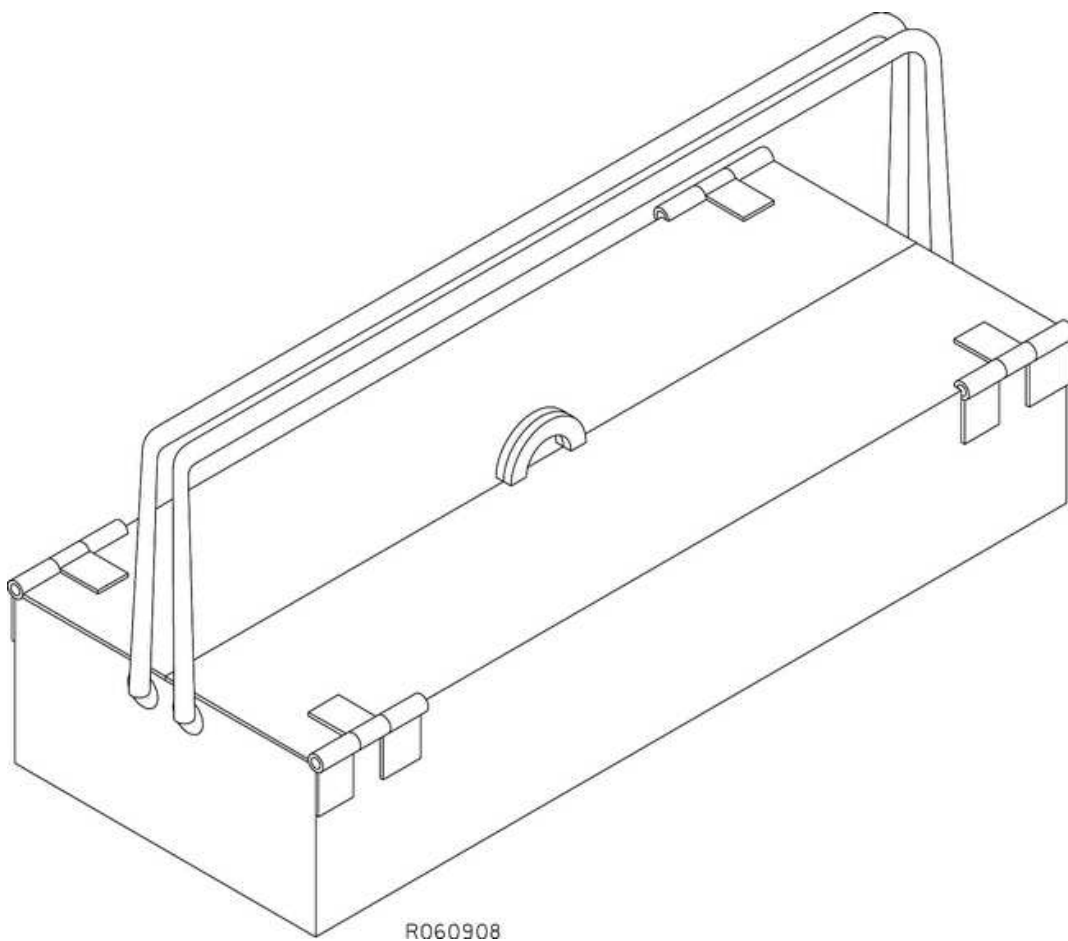


R060194

Item	Description	Part no.	Specification	Note	Qty
2	Piston assembly (incl. parts 2.1-2.4, 13.1 and 14.2)	104497			1
2.1	Poppet spool				1
2.2	Poppet				1
2.3	Piston				1
2.4	Cylinder				1
3	Water piston	104498			2
4	Pump body	104499			1
5	Manifold	104500			1
6	Cover, left	104501			1
7	Cover, right	104502			1
8	Flange	104503			2
10	Damper	104506			4
13	Screw set (incl. parts 13.1-13.6)	104513			1
13.1	Nut		M8, nyloc		1

13.2	Screw		M8x16	4
13.3	Hex. socket screw		M10x45	10
13.4	Hex. socket screw		M6x40	4
13.5	HF plug		BSP 3/8	3
13.6	HF plug		BSP 1/4	2
14	Seal set (incl. parts 14.1-14.7)	104511		1
14.1	Seal		55-44-4	1
14.2	Seal		24-16.5-3	1
14.3	Seal		30-41-4	4
14.4	Seal		30-41-4-1T	2
14.5	O-ring		57x3	3
14.6	O-ring		17x2	2
14.7	O-ring		27x2	4
15	Water valve set (incl. parts 15.1-15.2)	104512		1
15.1	Suction valve			2
15.2	Pressure valve			2
16	Flow restrictor (optional)	104508	SC 13-9/20	1
17	Flow restrictor (standard)	104509	SC 13-9/10	1
18	Seal	911041	Usit R1/2	1

Tool box



Item	Description	Part no.	Specification	Note	Qty
Kit3	Tool box kit 3 (incl. parts 1-22)	902044			1
6	Tool grease	902045			3
8	Screwdriver		6x150		1
9	Hammer		2 kg		1
17	Drift pin	400594	D22/D38/D40x200		1
19	Drift pin	400369	D15.5x360		1

21	Drift pin	400595	D20x400	1
22	Drift pin	400596	D16/D28/D30x250	1