

**modularis**drive 

Compact and Fully  
Closed Chassis

Synchro &  
Asynchro Arm  
Movement

Strong and  
Rigid Rotation Joint

Innovative Best Grip  
Design

Innovative Concept Based on Bionics

# FIRST **SMART** & UPGRADABLE GRAPPLE

[www.modularis-drive.com](http://www.modularis-drive.com)



Innovative  
Best Grip  
Design

Multifunctional **MODULAR**  
and smart.



Quick and easily interchangeable arms  
and connection plates.

Over 15 different variations of working  
functions on the grapple itself, additional tools  
are available for application also in agricultural  
or industry segment.





# Easy and fast - ARMS & GRIP

units replacement

## A-Synchro arm (grip unit) movement

The only Grapple on the market which has »A - Synchro Grip« synchro & asynchro arm movement - the arms shape & arm movements adapt to the load shape and the functions which the user needs.

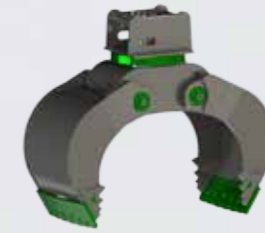
Asynchronous movement of the grip arms allows:

- Handling the asymmetric shaped loads in limited positions
- Adjustment of the gripping surfaces of the shape of the load
- Optimal and most reliable grip at the end position of the arms

Designed for reliable gripping, safe work and less energy consumption.



DEMOLITION ARMS



UNIVERSAL BEST GRIP GRAPPLE ARMS



BULK MATERIAL GRAPPLE ARMS



SORTING ARMS



BIOMASS GRAPPLE ARMS



TUBE & PROFILE GRAPPLE ARM



TREE SHEAR GRAPPLE ARM



ALLIGATOR GRAPPLE ARMS



ALLIGATOR SCREENING AND SORTING GRAPPLE ARMS



BEAK GRAPPLE ARMS



AGRO GRAPPLE ARMS

“I have surrounded myself with very smart people.”  
- Bill Edison

Is it time to surround yourself with the best and very smart tools?





# BEST GRIP GRAPPLE

The most reliable and safe grip - for the most demanding handling, safe manipulation and reliable grip.



“  
FOR THE SAFEST ROCK  
HANDLING

EACH GRIPPING DETAIL IS DESIGNED  
WITH A PURPOSE.

“  
*The purpose of life is not  
to be happy. It is to be  
useful, to be honorable, to be  
compassionate, to have it make  
some difference that you have  
lived and lived well.*”

- Ralph Waldo Emerson

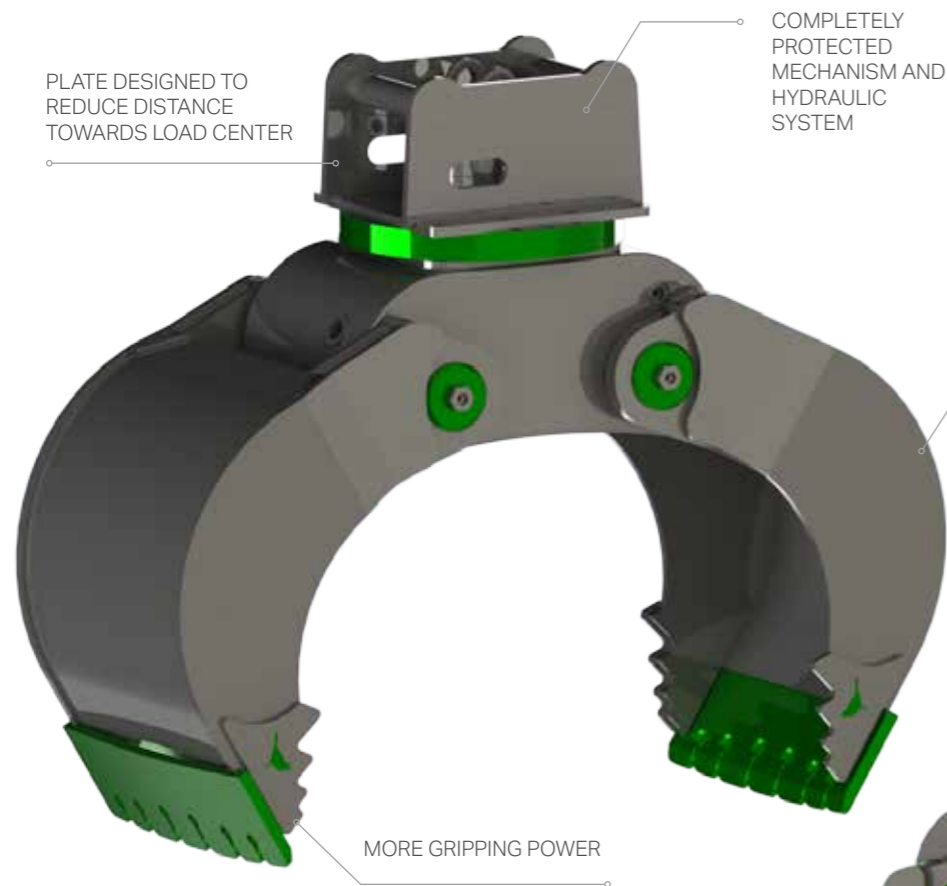


PLATE DESIGNED TO  
REDUCE DISTANCE  
TOWARDS LOAD CENTER

COMPLETELY  
PROTECTED  
MECHANISM AND  
HYDRAULIC  
SYSTEM

LESS WEIGHT -  
REDUCED LOADCENTER  
- HIGHER CAPACITY

MORE GRIPPING POWER



For the safest  
rock handling



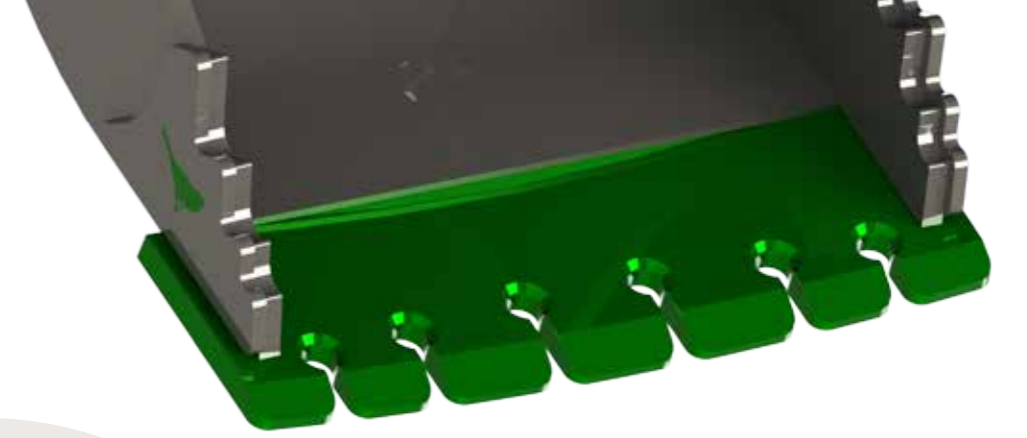
Universal sorting  
and handling



for Demolition  
- fully closed  
Grapple







“  
INOVATIVE SHAPE OF GRIPPING  
JAWS - THE MOST RELIABLE GRIP



“

*“Make it simple. Make it memorable. Make it inviting to look at.  
Make it fun to use.”*

- Noam Johanson





# Heavy duty **DEMOLITION** GRAPPLE

Heavy manipulation grapple for demolition tasks and the sorting of all kinds of building materials.

HIGH CLOSING FORCES  
- TWO HORIZONTALLY  
POSITIONED HYDRAULIC  
CYLINDERS, INTEGRATED  
ROTATION



POWERFUL GRIP FOR  
CRUSHING STRENGTH

For Demolition -  
fully closed



DURABLE CUTTING  
EDGES HB500



Modularis sorting grapple is ideal for excavation of earth and mud, material handling, placement of stones (recommended BEST GRIP arm) and boulders, collecting green waste, small demolitions for optimum and quick selection of different materials.



# **SORTING** GRAPPLE

OPTIMAL SORTING APPLICATION



Universal sorting  
and handling



“You don't reach points in life at which everything is sorted out for us. I believe in endings that should suggest our stories always continue.”

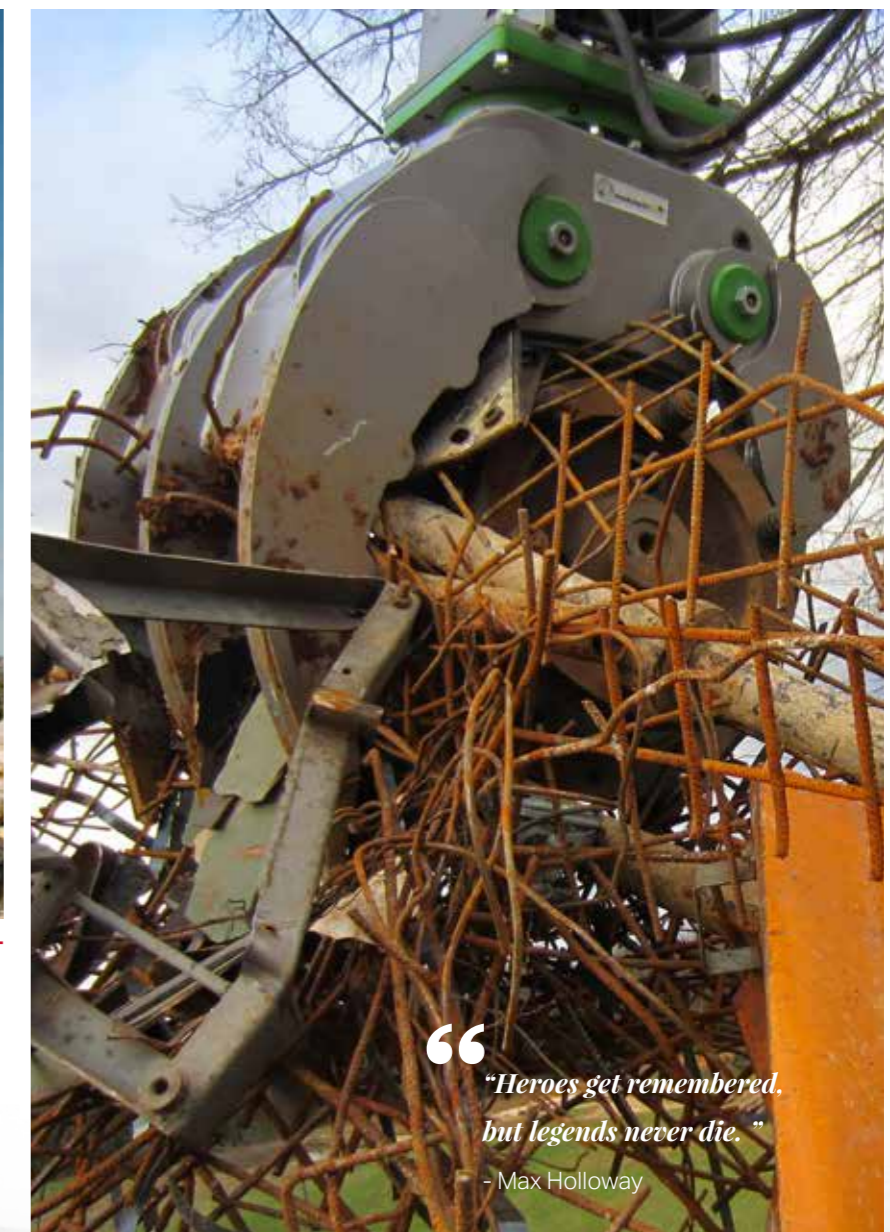
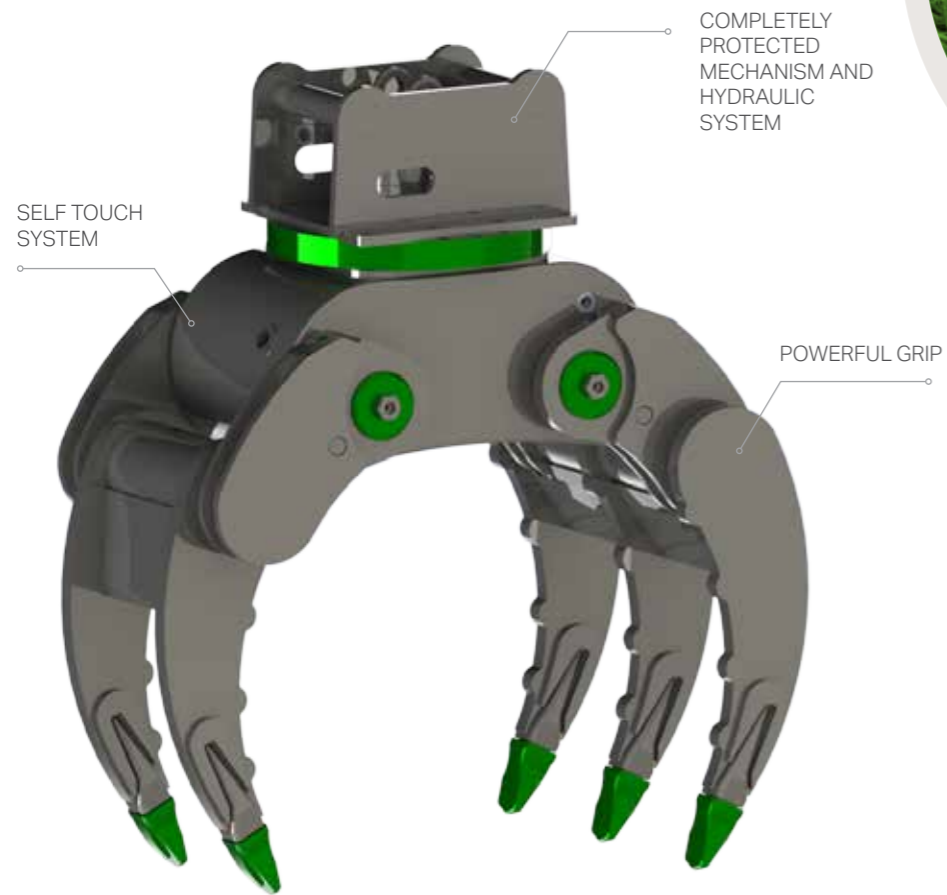
- Lauren Oliver





# ALLIGATOR GRAPPLE

Modularis Alligator grapple was developed as the most useful forestry tool in general. Works like root pulling, log&timber handling (biomass) and cleaning forest shouldn't be a problem anymore. It can be usefully combined also with our saw unit, due to arm grip that provides holding the log&timber in position.



“Heroes get remembered, but legends never die.”  
- Max Holloway



Biomass, wood, logs & timbers handling and roots pulling



Scrap handling and sorting



Precision Rock Handling







“

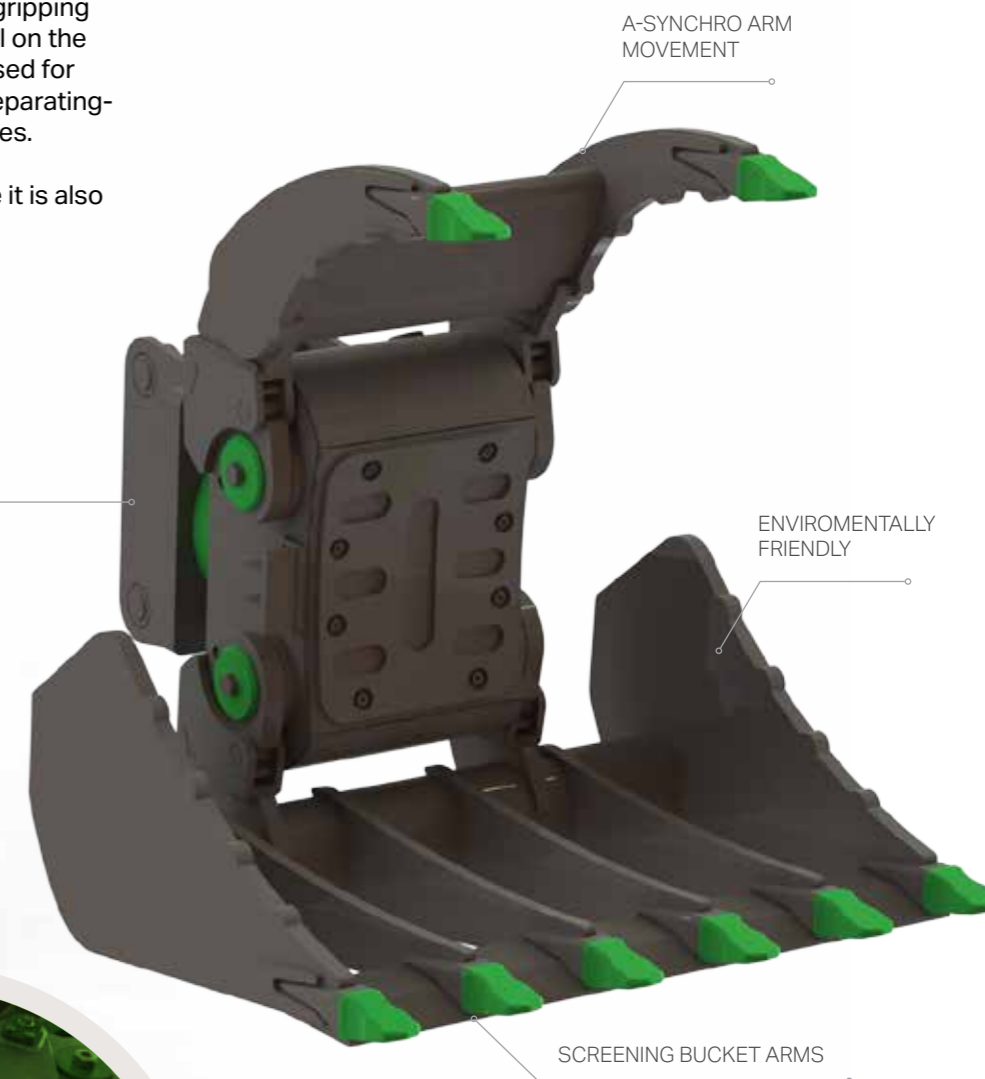
IN ORDER TO KEEP MY POWER ALIVE,  
I JUST TRY TO ENJOY LIFE TO THE  
FULLEST.

- G-Dragon

# ALLIGATOR SCREENING GRAPPLE

Alligator screening bucket grapple joins two types of work, gripping and screening of material on the same spot. Commonly used for green waste recycling-separating-cleaning construction sites.

On some areas in Europe it is also used for sorting stones.



Used for green waste recycling-separating-cleaning ...





# TREE SHEAR GRAPPLE

## Grapple & Tree Shear in one tool

Multifunctional Grapple designed also as MODULARIS TREE SHEAR - GRAPPLE SAW is the best application for the harvest of bushes and small trees and maintenance work along roads and waterways. Wood cutting by this model can also be achieved by A - Synchro arm movement, which means arms always hold the tree first and then finish it by done by cutting off the tree. Grapple is extremely robust and easy to maintain, due to exchangeable cutting-edge material HB500.

HIGHER SHEAR POWER ACHIEVED BY NEW KNIFE SHAPE

KNIVES FOR MAXIMUM CUTTING PERFORMANCE



Trees & Timber cutting



Patented cutting system



## MUNICIPALITY WORKS

Clearing branches along roads and waterways.

## SAFE MANIPULATION AND CUTTING OF WOOD.





“  
**PATENTED  
 CUTTING  
 SYSTEM**

The unique shape of the knives significantly reduces the necessary cutting power.



**PROFESSIONAL OR  
 SIMPLE VERSION**



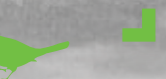
Tree shear with rotation – professional user



Tree Shear without rotation – simple version



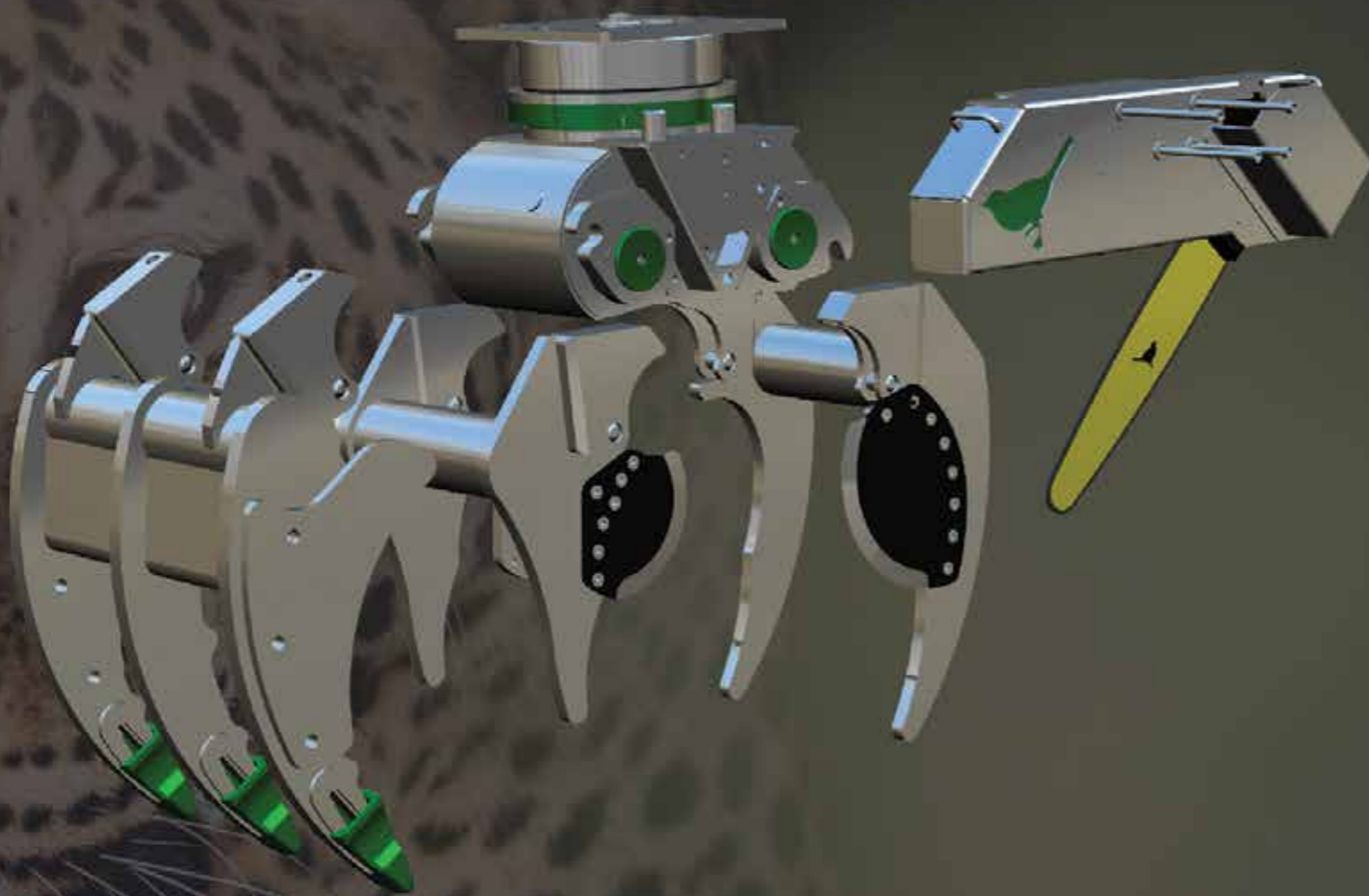
*All for the best. Best for all.*





# FORESTRY BIOMASS MODULE

(Saw + Tree Shear + Alligator)



UNIVERSAL USE



Wood biomass manipulation



Tree cutting and sawing



**“MODULARIS BIOMASS GRAPPLE MODUL** is the first module combining the most common forestry application joined in one modular package. It contains three Modularis forestry application grapple arms SAW+TREE SHEAR+ALLIGATOR in one tool, one package. Cost effective investment in BIOMASS MODULE is for sure great economic solution, providing timber handling, sawing and cleaning forest in one tool.



*Built for the toughest demands.*



Forest area cleaning





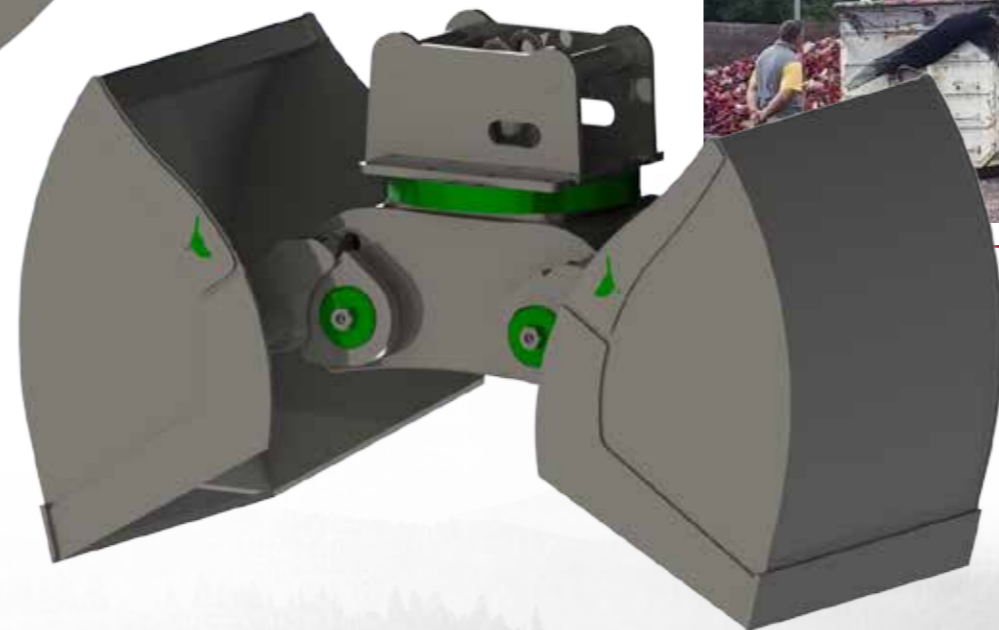
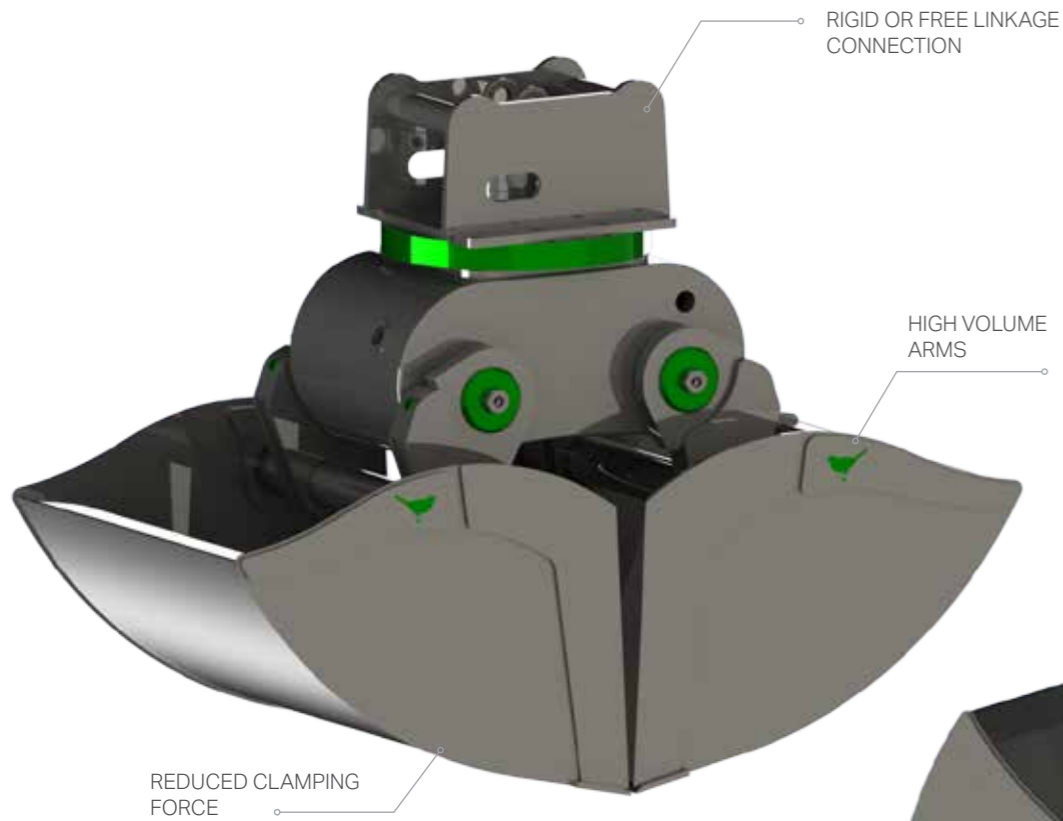
# BULK MATERIAL GRAPPLE

Modularis Bulk material grapples are well suited for handling a wide range of materials, such as rocks, scrap metal, and waste. Grapples are particularly useful in paper mills, logging, and forestry, as well as recycling and shipping applications in ports. High volume arms mounted on higher operating weight excavators are simplifying manipulation of large quantities of raw material.



EXPERIENCE THE DIFFERENCE & BE SURPRISED.

Be blown away by our innovative technology and forget about everything you knew about grapples.



Wide range



Manipulation of raw material





# HEAVY DUTY & Most Demanding Manipulation

Compact chasis –  
**100%**  
resistant to damage



Use in **heavy** and **difficult** working conditions  
- demolition, manipulation of dangerous  
objects.

**Powerful**  
Reliable  
Effective  
**Safe**



Super,  
reliable grip







Simple  
 Modular & Multifunctional  
 Agile  
 Reliable  
 opTimal

Modularis Upgradable SMART Grapple is your optimal solution for the most demanding needs. It is Simple, Convenient, Robust, Reliable, Increases YOUR Productivity and gives you FEEDBACK.

# ModulariSmart concept

**Work Smart / Save time / Save Money / Work Modularis**

Innovative, unique and patent pending two-way communication is monitoring and setting the operating parameters. You can install and choose among different working modes.

**Area of usage :**

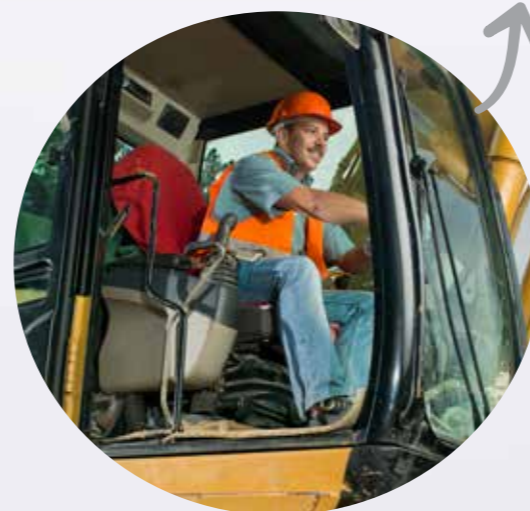
- Heavy Duty Load handling, where high safety is required
- Manipulation of sensitive and brittle loads, where a specific adjustable closing force is required
- Precise manipulation
- Additional work functions for your machine with Upgradable Grapple such as Sawing and cutting the trees

**With a touchscreen interface you can choose the standard operating modes and define the operating parameters such as:**

- Pressure - clamping force
- Turning torque
- Switch the brake on / off for the rotation locking of the Grapple

**Through displayed parameters you are informed about actual Grapple performance as the:**

- Gripping force
- Moment of rotation
- Brake status
- Actual working mode



Machine operator



“  
 Adjust the working pressure,  
 set operating modes and  
 control the gripping force.”



# Imagine...

Leverage, Be Flexible & **Smart**

**modularis***drive* 

**WANT TO BE SURPRISED EVEN MORE?**

Contact Modularis team:

Modularis TEH d.o.o., Ljubljanska c. 11, 1270 Litija

T: +386 41 675 156, +386 820 54 280

E: [info@modularis-drive.com](mailto:info@modularis-drive.com)

[www.modularis-drive.com](http://www.modularis-drive.com)

