

Concrete Plant - Main Technical Specifications

Aggregate Pre-Feeding System

- Hopper: 5m³
- Transfer conveyor

Aggregate Storage Bins

- 6x50m³
- Inline type
- Moisture probe

Aggregate Weigh Hopper

- 6x5500kg
- 2x Vibrators

Aggregate Transfer Conveyor

- 2 Units
- With walkways and parapets
- With pull cord system

Aggregate Holding Hopper

- 2 Units
- Capacity: 7,4 m³

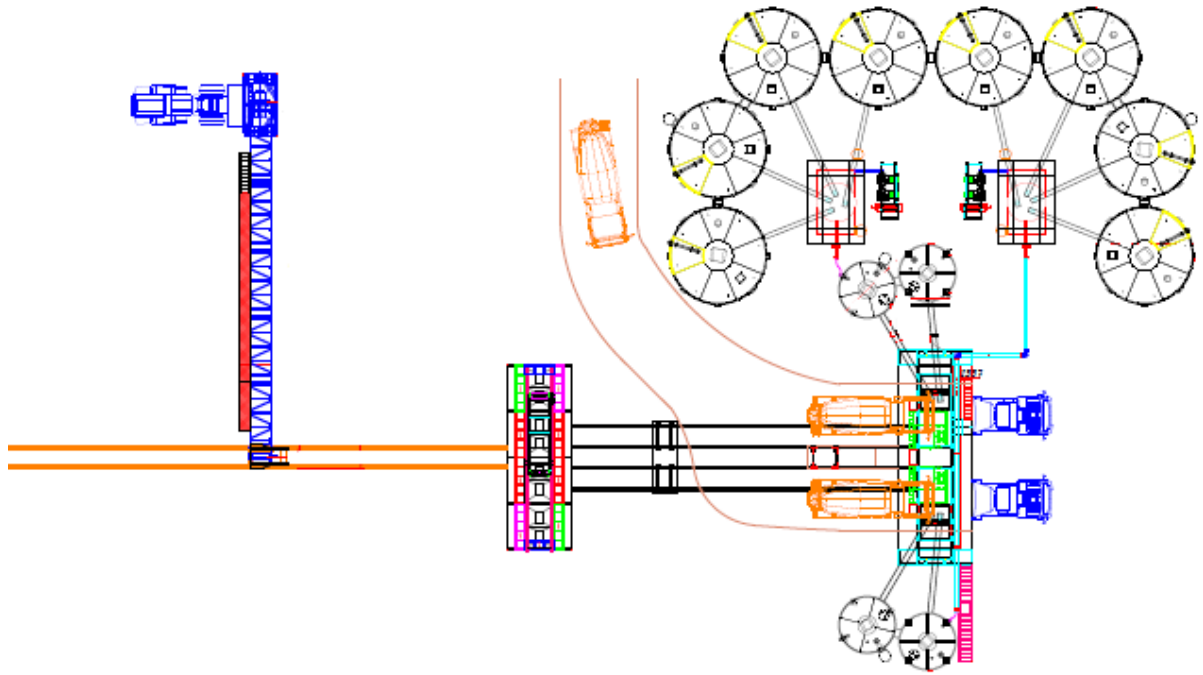
Mixer

- Horizontal twinshaft
- 2x 200m³/h
- Dry filling capacity: 7500L
- Vibrated concrete capacity: 5000L
- Cement weigh hopper: 2750kg
- Water weigh hopper: 1200L
- Additive weigh hopper: 2x50L
- High pressure water system inside the mixer

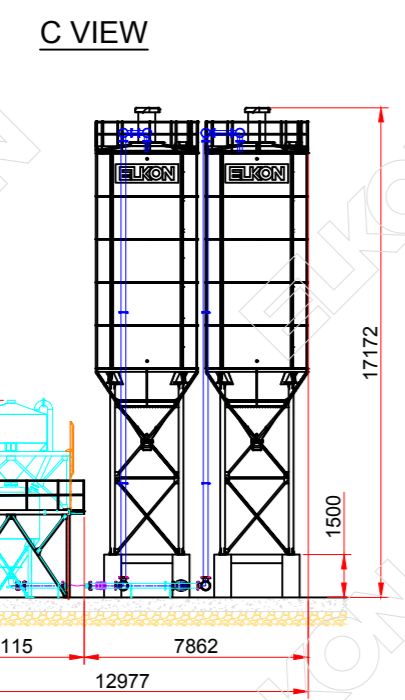
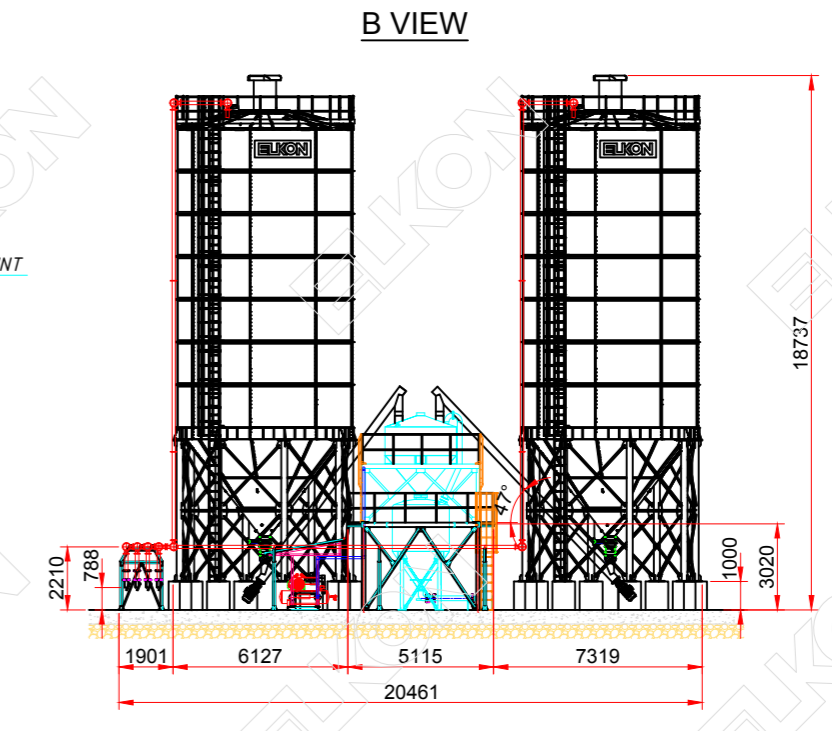
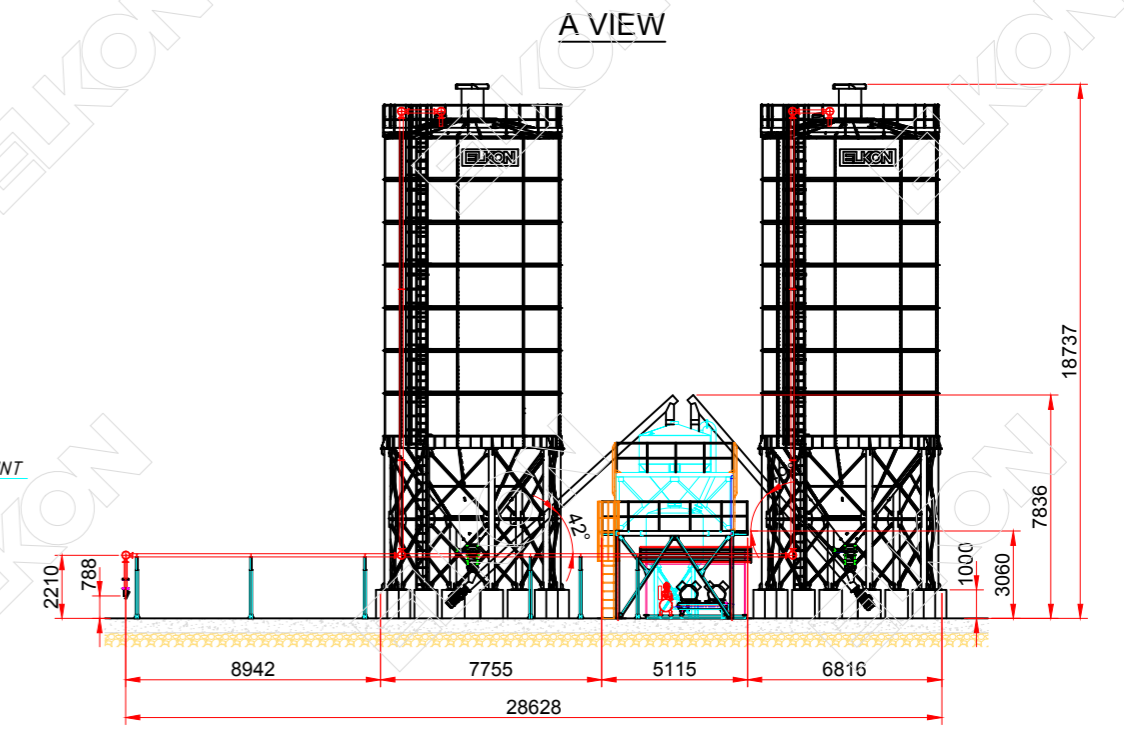
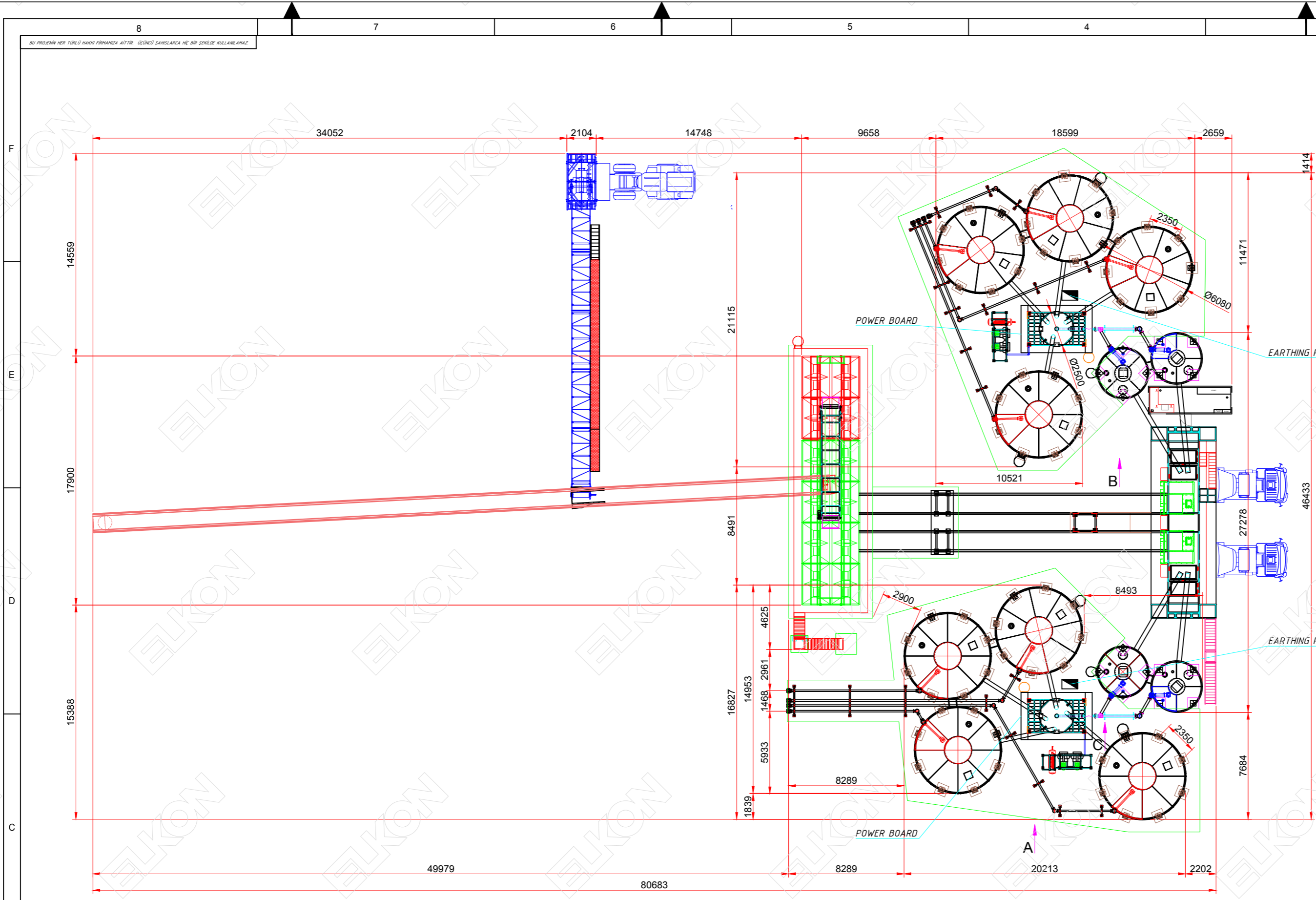
Cement Silos

- 4x100ton with screw
- 8x500tom
- Air Filers (jet pulse)
- 2x pneumatic cement transfer system

Layout:



Rev.	Rev. Yapan	Revizyon İçeriği	Tarih	Onay
-	-	-	-	-



TOTAL ELECTRICITY POWER 2 x 95 kW = 190 kW

Not : -				
Kullanım Yeri : -				
Tarih	15.03.2019	Ad Soyad	İmza	Adet
Ölçek	Çizen	Hakan YILMAZ		Malzeme
1/1	Proje	Emre RESULOĞLU		Ağırlık
	Kontrol	Emre RESULOĞLU		kg/ad
	Onay	Mustafa ALPAGUT		
Parça Adı	2017-282 ANDRADE GUTIERREZ 8x500 SİLO PNÖMATİK SEVK SİSTEMİ GENEL YERLEŞİM PLANI			



Dimensions are in mm