

SPECIFICATIONS

	6.5T GVW Iveco Daily 65C	7.0T GVW Iveco Daily 70C
Working height	16.5m	16.5m
Platform height	14.5m	14.5m
Max. outreach	7.3m	7.3m
Max. outreach with optional load-cell*	8.4m	8.4m
Max. bucket capacity	200kg	200kg
Flyboom	110°	110°
GVW	6500kg	7000kg
Max. slope	5°/10°	5°/10°
Payload (after driver, passenger & fuel)**	1800kg	2300kg

* At additional cost **Subject to options fitted

STANDARD

- Telescopic upper boom
- Articulated lower boom
- 110° flyboom
- Single joystick control system
- 12V DC emergency lowering system
- A-frame stabilisers
- 200kg SWL bucket
- Class-leading payload
- Type Approved

OPTIONS

- Extended outreach with load-cell (120kg SWL one person)
- Twin joystick control system
- Slew rotation interlock
- Walk-in bucket
- 1kV certified insulation
- Chapter 8 compliance
- Bespoke storage racking

LAT160-F

VAN MOUNTED PLATFORM



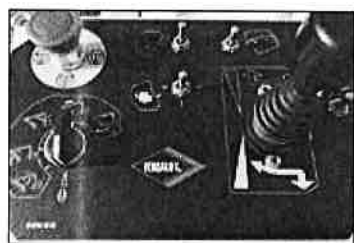
Massive storage and load capacity



12V DC emergency ground controls



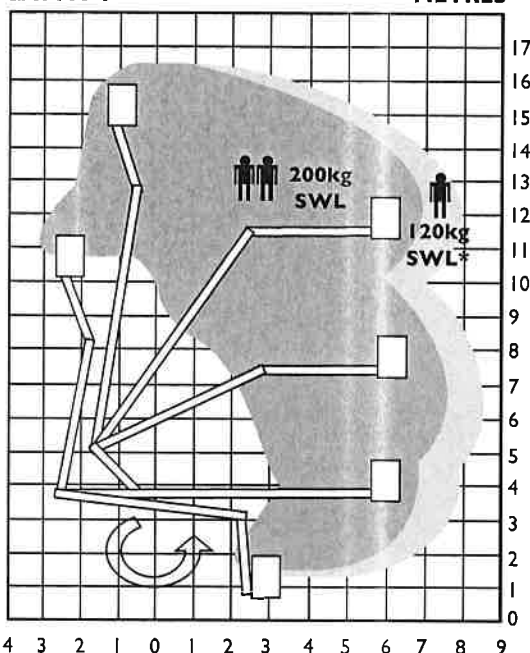
Proven A-frame stabiliser system



Single joystick control system for improved health and safety

The photographs in this brochure are for promotional purposes only. Specifications are subject to change without notice.

LAT160-F METRES



Articulated, telescopic boom maximises the working envelope of the platform



1 Altendiez Way,
Latimer Park,
Burton Latimer,
Kettering, NN15 5YT
T: 01536 721010
F: 01536 721111
E: sales@versalift.co.uk
W: www.versalift.co.uk



TRACK MOUNTED



PICK-UP MOUNTED



VAN MOUNTED



CHASSIS MOUNT



TRUCK MOUNTED



INSULATED PLATFORM



Revision: 05/16/01

www.versalift.co.uk